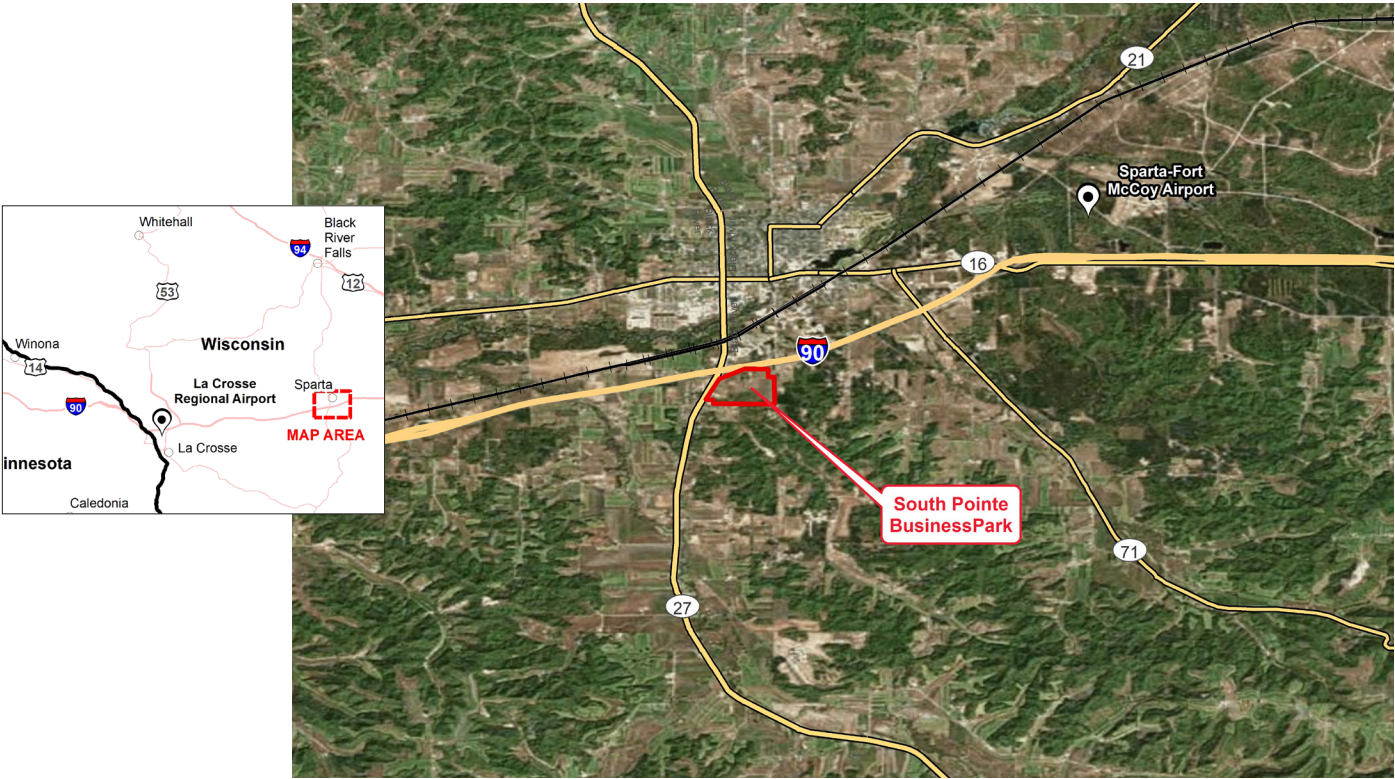


**XCEL ENERGY CERTIFIED SITE**  
**SOUTH POINTE BUSINESS PARK**  
**SPARTA, WISCONSIN**



CERTIFIED SITE DETAILS	
Location	Intersection of State Highway 27 and I-90 3000 block of S. Black River Street Sparta, Wisconsin
Owner	City of Sparta
Size	93.7 acres
Zoning	Manufacturing Business Park; Interchange Business District
Asking price	\$15,000/acre
Highway access	Adjacent to I-90 20 miles to I-94 20 miles to US 12
Air access	26 miles to La Crosse Regional Airport 170 miles to Minneapolis-St. Paul International Airport
Rail access	No rail access

## UTILITIES

<b>Electric power</b>	Xcel Energy	3 phase; 12.5 kV underground service to the business park; will be looped service within the park
<b>Natural gas</b>	We Energies	4" line along Hwy 27, 20-30 BTU/hour available capacity
<b>Water</b>	City of Sparta	12" water main, 58-73 PSI, 1.7 MGD (1,200 GPM)
<b>Sewer</b>	City of Sparta	6" line service to each lot, 15" gravity main in streets adjacent to site, 100,000 GPD
<b>Storm water</b>	City of Sparta	Municipal storm sewer serves the park
<b>Telecom/fiber</b>	Lynxx Networks, CenturyLink, Charter Communications	Fiber service with multi-GB available

## SITE DUE DILIGENCE AND COMMUNITY DOCUMENTATION

<b>Title commitment</b>	✓	<b>Archeological and Historic Use assessments</b>	✓
<b>Aerial site views and maps</b>	✓	<b>Park covenants and restrictions</b>	None
<b>Park master plan</b>	✓	<b>Transportation access maps</b>	✓
<b>Utility service maps</b>	✓	<b>Geotechnical study/soil survey</b>	✓
<b>Site dimensions and configuration</b>	✓	<b>FEMA Flood Plain Designation with map</b>	✓
<b>Wetlands delineation and map</b>	✓	<b>Air attainment status</b>	✓
<b>Phase 1 environmental assessment</b>	✓	<b>Endangered species assessment</b>	✓
<b>Community profile and demographics</b>	✓	<b>Letters of support</b>	✓
<b>State and local incentives overview</b>	✓	<b>Business and industrial support services and amenities profile</b>	✓

## XCEL ENERGY CONTACT

### Patrice Meger

Manager, Corporate Economic Development  
 patrice.b.meger@xcelenergy.com  
 651-271-6955

## ECONOMIC DEVELOPMENT ORGANIZATION

### Todd Fahning

Director, Community Development  
 City of Sparta  
 bldg@spartawisconsin.org  
 608-269-4340 ext. 232

Xcel Energy makes no warranty or representation as to the accuracy, quality, availability, completeness, or suitability of any information contained herein. All information must be independently verified. The user shall not rely on any of the information contained herein and shall assume all risk and responsibility arising from its use.

