

Southeast New Mexico grid expansion not slowing down

GLOBAL SWINGS IN ENERGY PRICES have not slowed the pace of Xcel Energy's construction plans in southeastern New Mexico, where hundreds of oil wells have already been drilled and industrial demand continues to grow. Crews are busy upgrading infrastructure to meet the growth in electricity demand that has been building for several years. Xcel Energy is investing more than \$630 million in new high-voltage transmission and distribution lines and substations, of which approximately \$163 million will be invested in 2015. More than 250 miles of new transmission and distribution line are scheduled to be constructed this year in New Mexico. The work is part of the Power for the Plains transmission enhancement program.

The first upgrade was completed in March, with the energizing of the \$4 million Pecos distribution substation to serve load growth in the Carlsbad area. This is the first of eight new substations that will go into service in 2015.

"We have experienced high load growth in an area where Xcel Energy has limited power delivery infrastructure," said David Hudson, president of Southwestern Public Service Company, an Xcel Energy company. "We are making a major commitment and a large investment to sustain this growth well into the future."





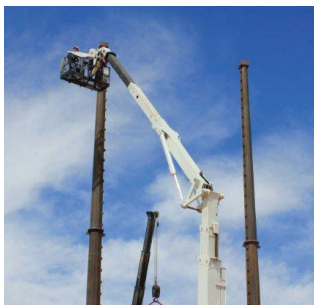
Hopi-North Loving-China Draw 115 kV project

The Hopi-North Loving-China Draw 115 kilovolt (kV) transmission line project is expected to be energized by the end of May, 2015. The 30-mile project includes nine miles of transmission line between the Hopi Substation, southwest of Carlsbad, to the new North Loving Substation located about eight miles southeast of Carlsbad. Another 19 miles of transmission line is being constructed between the North Loving Substation and the new China Draw Substation, about 22 miles south of Carlsbad. The project will provide additional transmission capacity and electric service for the area near Loving south along State Highway 285 to the Texas state line.

is designed to improve reliability and meet growing electricity demand in Eddy and Lea counties, and is expected to be complete by the end of 2015. The estimated cost is \$53 million.

Construction is nearly complete at the Quahada 115 kV Substation in western Lea County. The project will provide additional capacity to help facilitate load growth.

Potash Junction-Roadrunner 345/230 kV project



Structure setting and foundation construction are underway on the 43-mile Potash Junction-Roadrunner transmission line project. More than 30 Xcel Energy crew members are constructing the line. The project will initially be operated as a

230 kV line, but is being built as 345 kV capable. The new line runs between the new Roadrunner Substation, about 45 miles southeast of Carlsbad, and the existing Potash Junction substation about 15 miles northeast of Carlsbad. The project



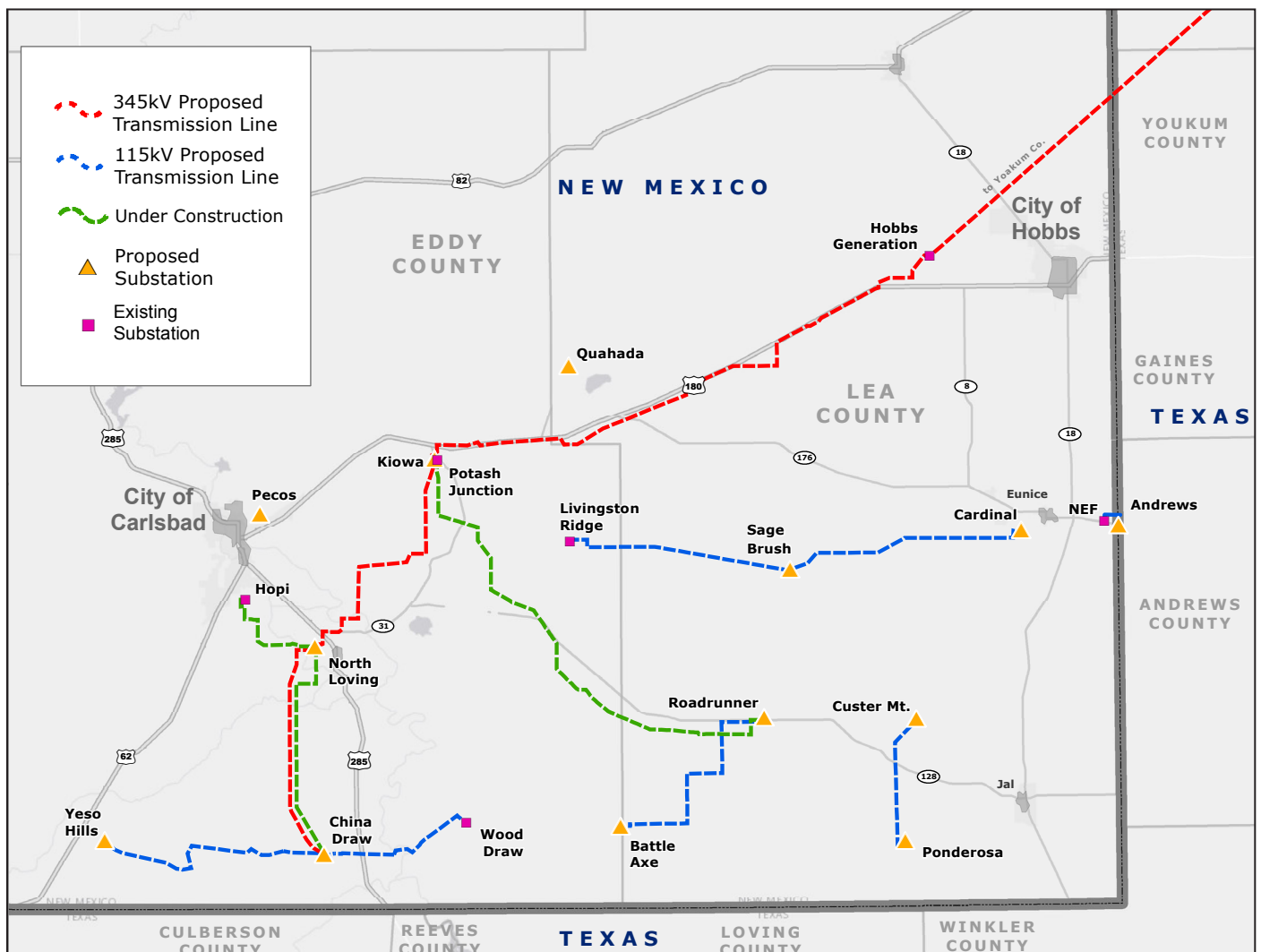
Other New Mexico Project Updates

While oil, mining and industrial growth are driving demand in the southeast, continued commercial and agricultural growth in Chaves, Roosevelt and Curry counties is driving other large infrastructure investments. Foundation construction is scheduled to begin in April, 2015 on the Curry-Bailey 115 kilovolt transmission project. The 37-mile line will connect the existing Xcel Energy Curry Substation located approximately 1.5 miles east of Clovis, New Mexico to the existing Xcel Energy Bailey Substation located one mile south of Muleshoe, Texas. A Certificate of Convenience and Necessity was approved by the

Public Utilities Commission of Texas on August 26, 2014. The project will improve system reliability as customer load growth and new generation resources are added to the transmission grid. Proposed in-service date is September 30, 2016.

Construction will begin in the spring of 2017 on a 10-mile 115 kV line between the Capitan and Price Substations in north Roswell and a 4.7-mile 115 kV line connecting the Price and Chaves County Substations northeast of Roswell. The project will boost the high-voltage transmission network serving the area.

Power for the Plains SE New Mexico Transmission Infrastructure





Learn more about all of the projects and contact us with questions or comments on Powerfortheplains.com.



Distribution Expansion

The network of lines that move power off Xcel Energy's high-voltage grid is known as the distribution system, and these lines deliver power directly to our customers. Xcel Energy continues to expand the distribution system to meet the additional load growth in southeast New Mexico. In 2014, the company constructed and rebuilt approximately 153 miles of distribution lines in and around Hobbs and Carlsbad. Approximately 128 more miles of line will be completed in 2015.

Learn more about all of the projects and contact us with questions or comments at Powerfortheplains.com.