

- ▲ Existing Substation
- Segment Breaks
- Proposed Substation
- - - Existing Distribution
- ~ Proposed Route
- - - Future Line Removals
- ▨ Potential Laydown Yards
- Public Lands

## Boot Lake to Chain O Lakes 34.5 kV Transmission Line and Substation Project

### Project Overview

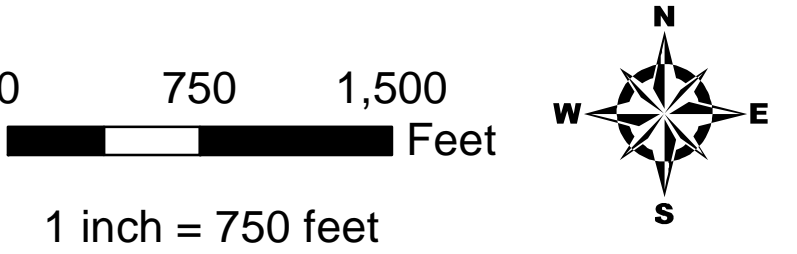
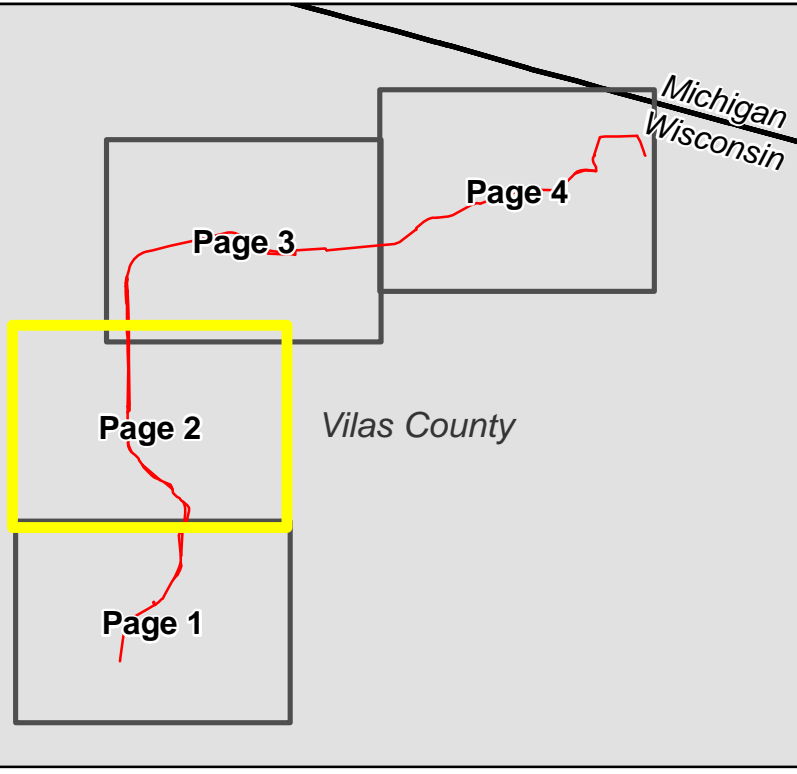
January 2023

Page 1 of 4



Disclaimer: This information is believed to be correct, but is subject to change and carries no warranty. Data courtesy of Xcel Energy, WI DNR, USGS, and ESRI. November 2022





- ▲ Existing Substation
- Segment Breaks
- Proposed Substation
- - - Existing Distribution
- ~ Proposed Route
- - - Future Line Removals
- ▨ Potential Laydown Yards
- Public Lands

## Boot Lake to Chain O Lakes 34.5 kV Transmission Line and Substation Project

### Project Overview

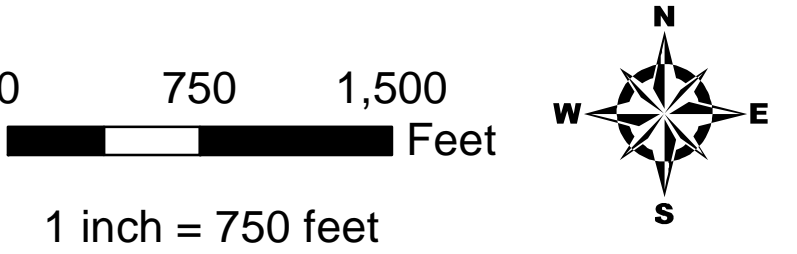
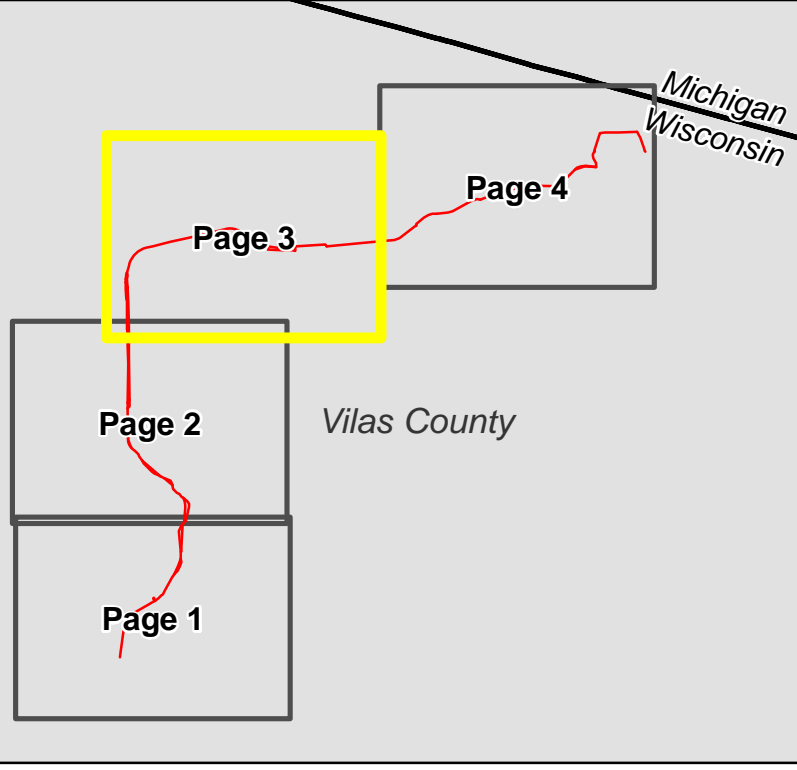
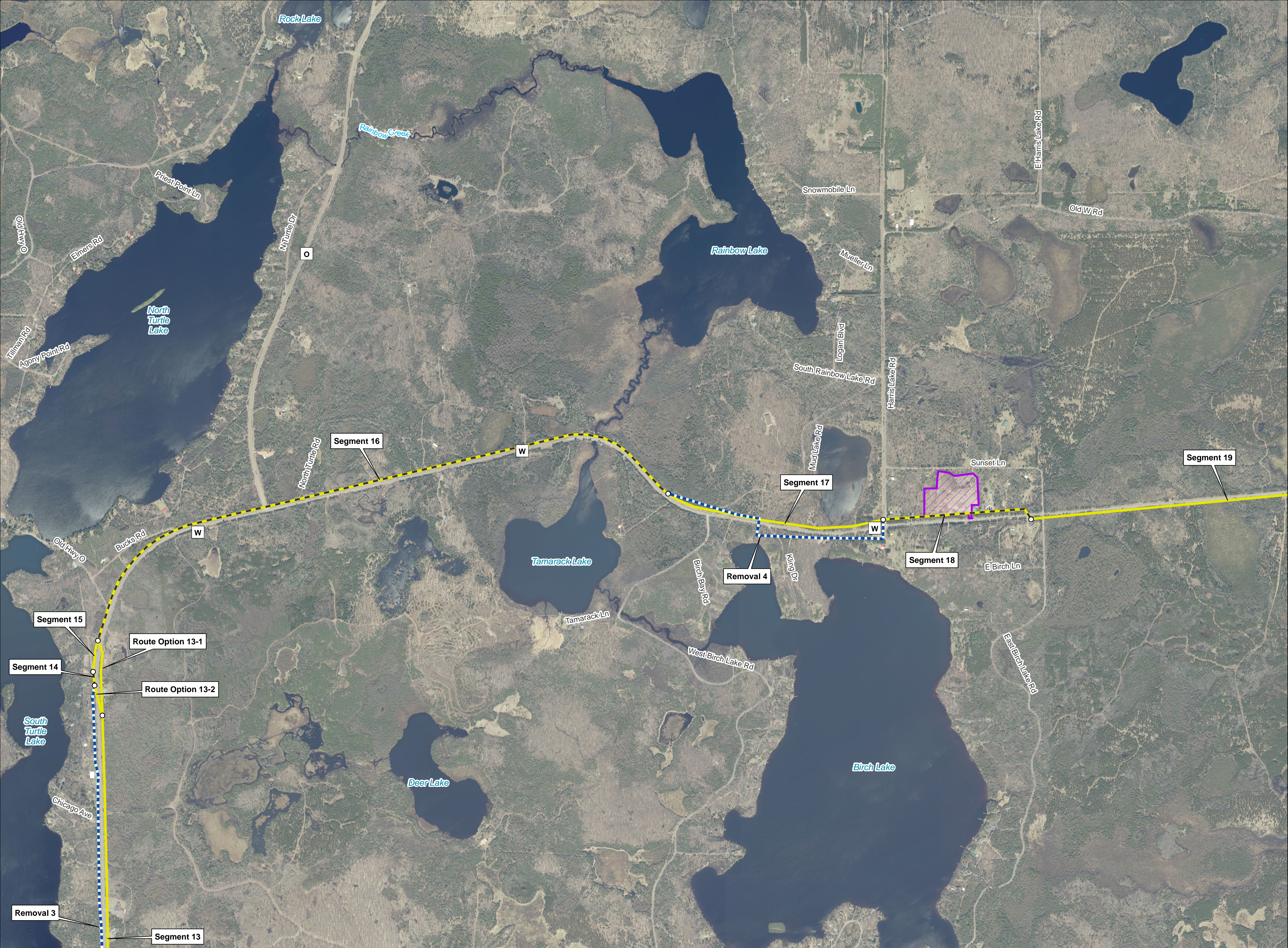
January 2023

Page 2 of 4



Disclaimer: This information is believed to be correct, but is subject to change and carries no warranty. Data courtesy of Xcel Energy, WI DNR, USGS, and ESRI. November 2022





- ▲ Existing Substation
- Segment Breaks
- Proposed Substation
- - - Existing Distribution
- ~ Proposed Route
- - - Future Line Removals
- ▨ Potential Laydown Yards
- Public Lands

**Boot Lake to Chain O Lakes  
34.5 kV Transmission Line  
and Substation Project**

**Project Overview**

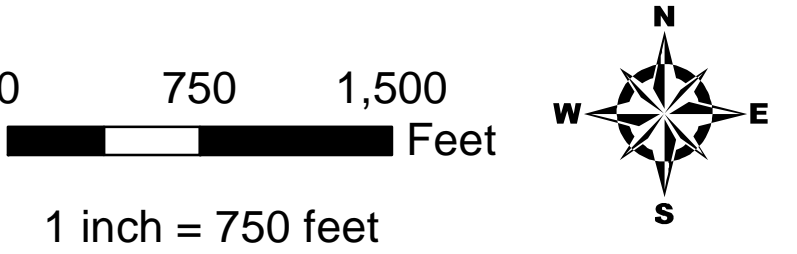
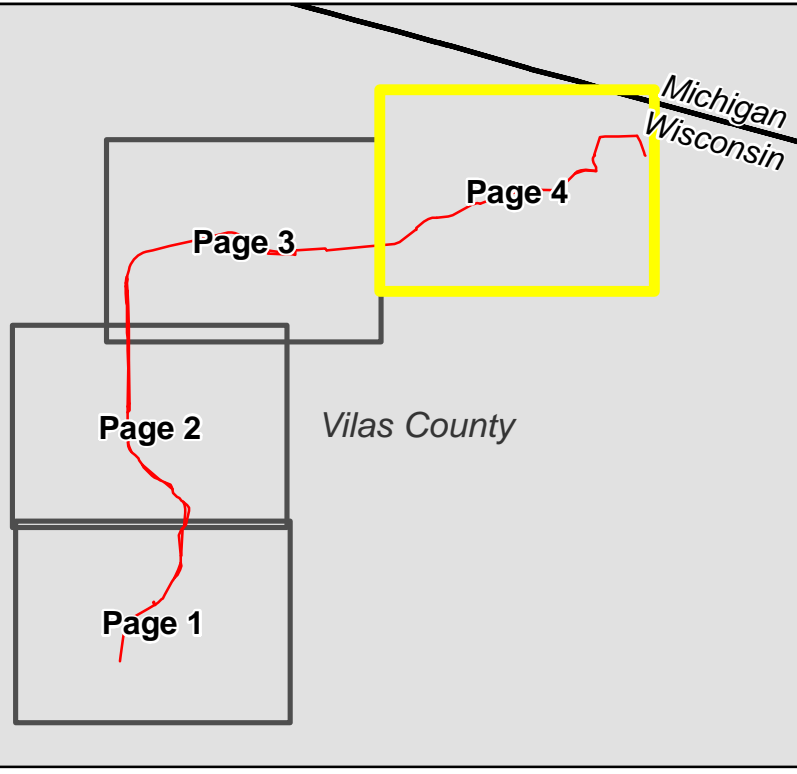
**January 2023**

Page 3 of 4



Disclaimer: This information is believed to be correct, but is subject to change and carries no warranty. Data courtesy of Xcel Energy, WI DNR, USGS, and ESRI. November 2022





- ▲ Existing Substation
- Segment Breaks
- Proposed Substation
- - - Existing Distribution
- Proposed Route
- - - Future Line Removals
- ▨ Potential Laydown Yards
- Public Lands

**Boot Lake to Chain O Lakes  
34.5 kV Transmission Line  
and Substation Project**

**Project Overview**

**January 2023**

Page 4 of 4



Disclaimer: This information is believed to be correct, but is subject to change and carries no warranty. Data courtesy of Xcel Energy, WI DNR, USGS, and ESRI. November 2022