



Matt McFarlane
1414 W Hamilton Ave
PO Box 8
Eau Claire, WI 54702-0008

YOU ARE INVITED ASHLAND-IRONWOOD TRANSMISSION LINE RELOCATION OPEN HOUSE

Xcel Energy invites you to attend an open house February 11 or 12 to provide input on route options for relocating two 35-mile existing transmission lines between Ashland, Wisconsin and Ironwood, Michigan (view map inside). The project is critical to providing reliable power for Northern Wisconsin and Michigan's Upper Peninsula. Landowners who live on proposed route options will receive another letter with a map showing the proposed route on their land.

***In the case of dangerous weather conditions, open houses will be rescheduled for February 18 & 19 at the same times and locations. Check the project website to verify the date at www.xcelenergy.com/ashlandironwood.*

OPEN HOUSE SCHEDULE

FEBRUARY 11

4 p.m.-7 p.m.
AmericInn Conference Center
3009 Lake Shore Drive East
Ashland, WI

FEBRUARY 12

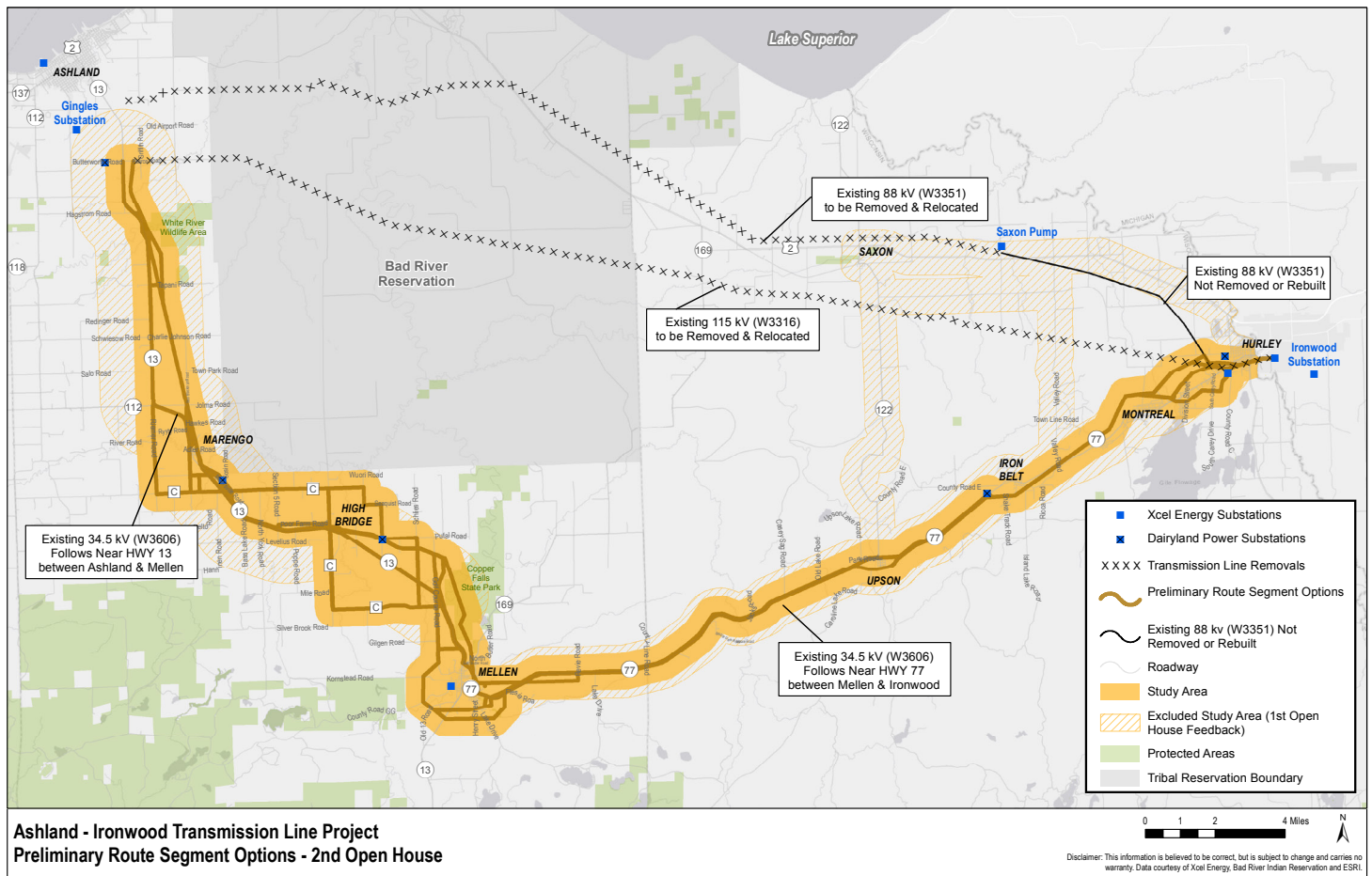
1 p.m.- 3 p.m.
Iron County Memorial
Building
201 Iron Street
Hurley, WI

FEBRUARY 12

6 p.m.- 8 p.m.
Mellen School (large gym)
420 S. Main St.
Mellen, WI



ASHLAND-IRONWOOD ROUTE SEGMENT OPTIONS



Xcel Energy received approximately 50 comments from the first round of open houses held on October 2 and 3, 2019. Based on the comments, we eliminated route options along and leading to Highway 2 and refined route segment options along Highways 13 and 77.

The lines being relocated have reached the end of their useful life and are located on terrain that is difficult to access. We are seeking public input to help identify more accessible and less environmentally impactful routes.

A third round of open houses will be held in the spring of 2020 with final route segment options that will be included in the application to the Public Service Commission of Wisconsin (PSC). Xcel Energy anticipates filing the Certificate of Public Convenience and Necessity with the PSC in 2020.

CONTACT US

Submit questions or comments by sending an email to matthew.j.mcfarlane@xcelenergy.com or calling **715-737-2434**.

Track project developments, view detailed maps, a video previewing the open house, and fill out the online comment form by visiting xcelenergy.com/ashlandironwood.