

APPENDIX A
PROJECT MAPS

Figure 1
Project Location

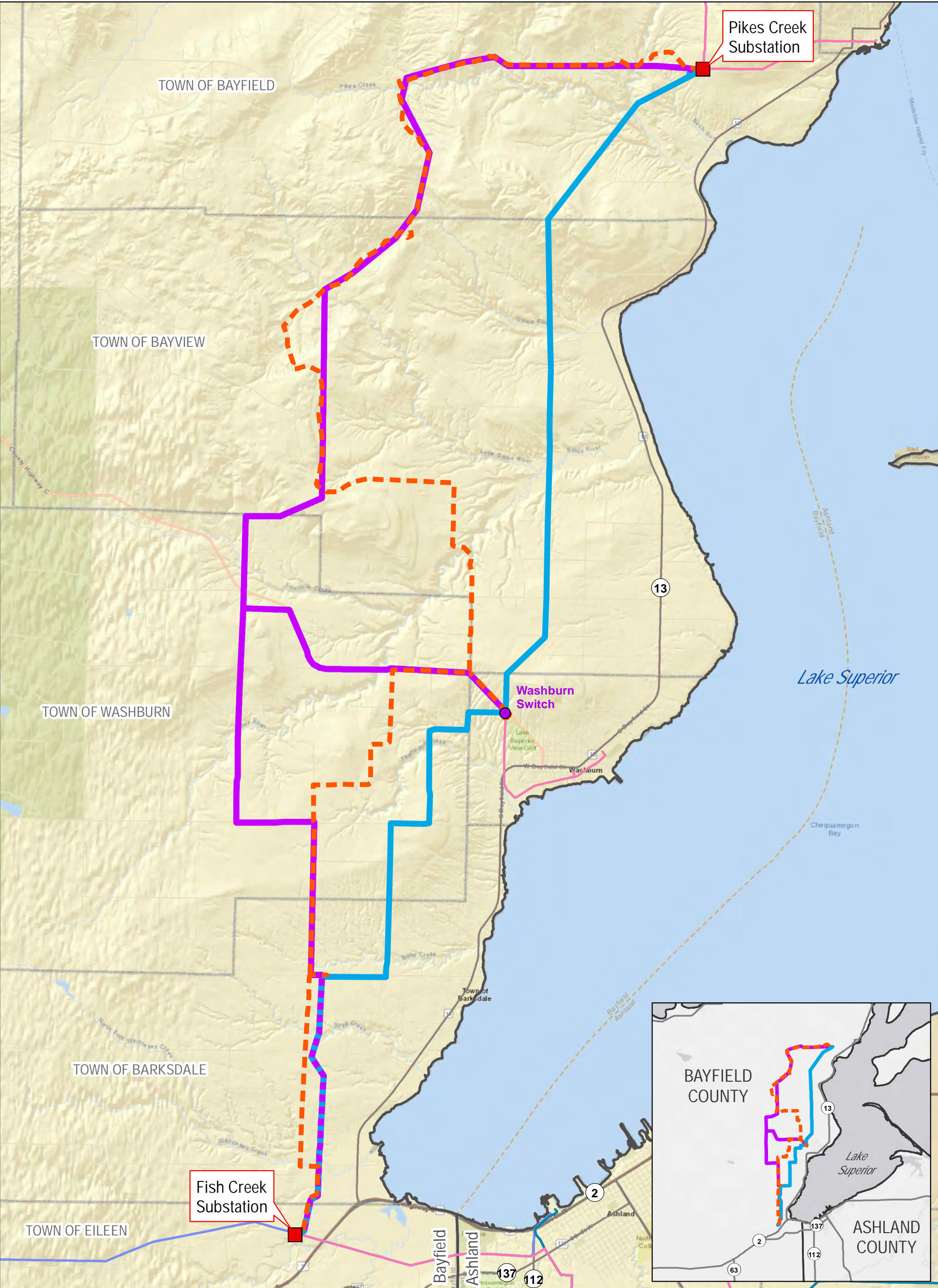


Figure 1. PROJECT LOCATION
BAYFIELD SECOND CIRCUIT TRANSMISSION LINE PROJECT



This information is believed to be correct, but is subject to change and carries no warranty. It is intended for reference purposes only. Applicant owned and operated facility locations are approximate. Data courtesy of Xcel Energy, ESRI, WDNR, Merjent, NPMS and ATC.

JANUARY 2019

- | | | |
|----------------------|----------|-----------------------------|
| Proposed Substations | Township | Existing Transmission Lines |
| West Route | County | 34.5 kV |
| East Route | | 88 kV |
| Bypass Lines | | 115 kV |



Figure 2
Existing Transmission System

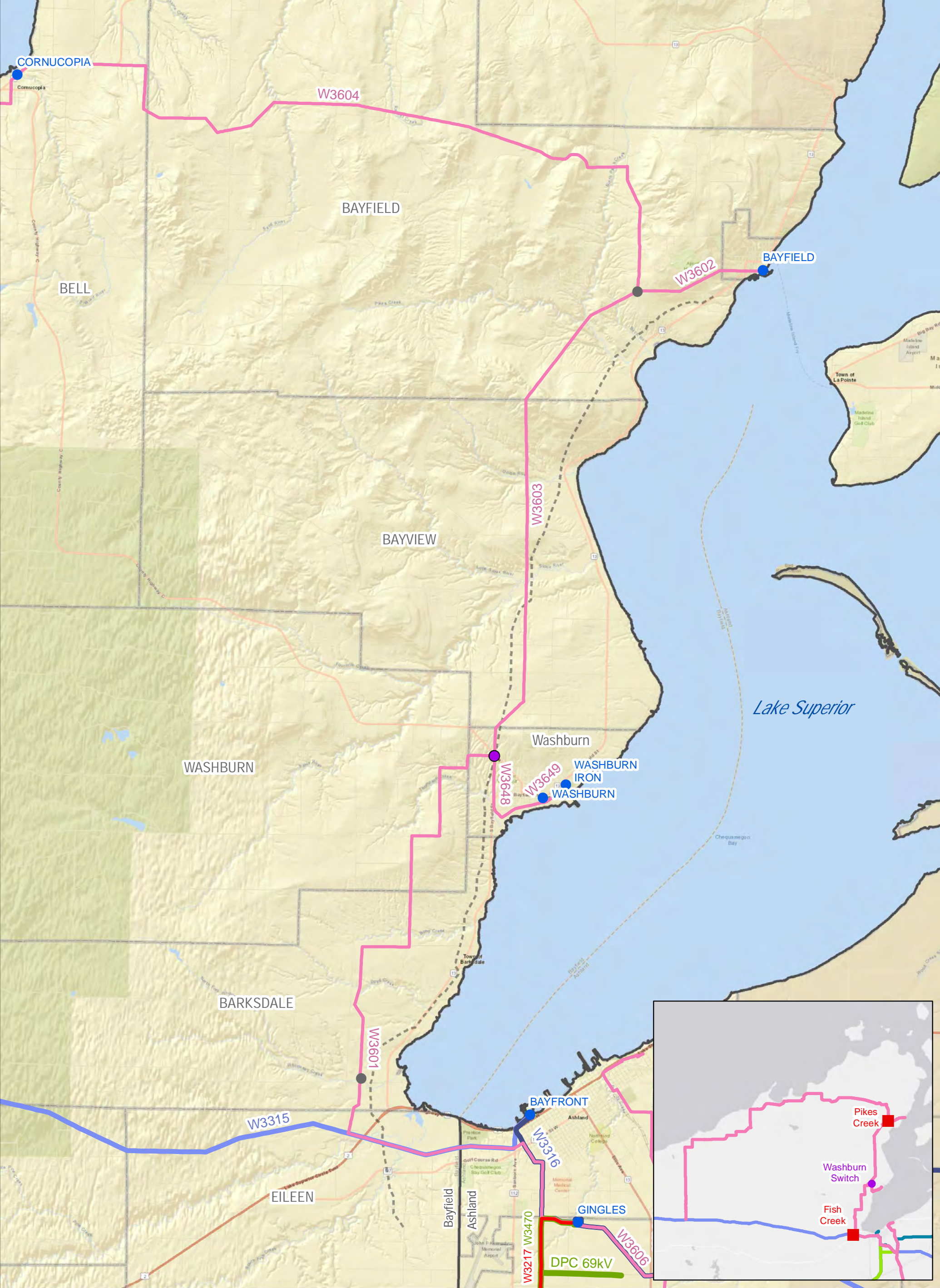


Figure 2. EXISTING SYSTEM
BAYFIELD SECOND CIRCUIT TRANSMISSION LINE PROJECT



This information is believed to be correct, but is subject to change and carries no warranty. It is intended for reference purposes only. Applicant owned and operated facility locations are approximate. Data courtesy of Xcel Energy, ESRI, WDNR, Merjent, NPMS, DPC and ATC.

JANUARY 2019

● Washburn Switch	Existing Transmission Lines	▭ Township
● Xcel Energy Substation	~ 34.5 kV	▭ County
● DPC Substation	~ 69 kV	
- - - Approximate Gas Pipeline	~ 88 kV	
	~ 161 kV	
	~ 115 kV	

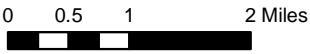


Figure 3
Routes Considered

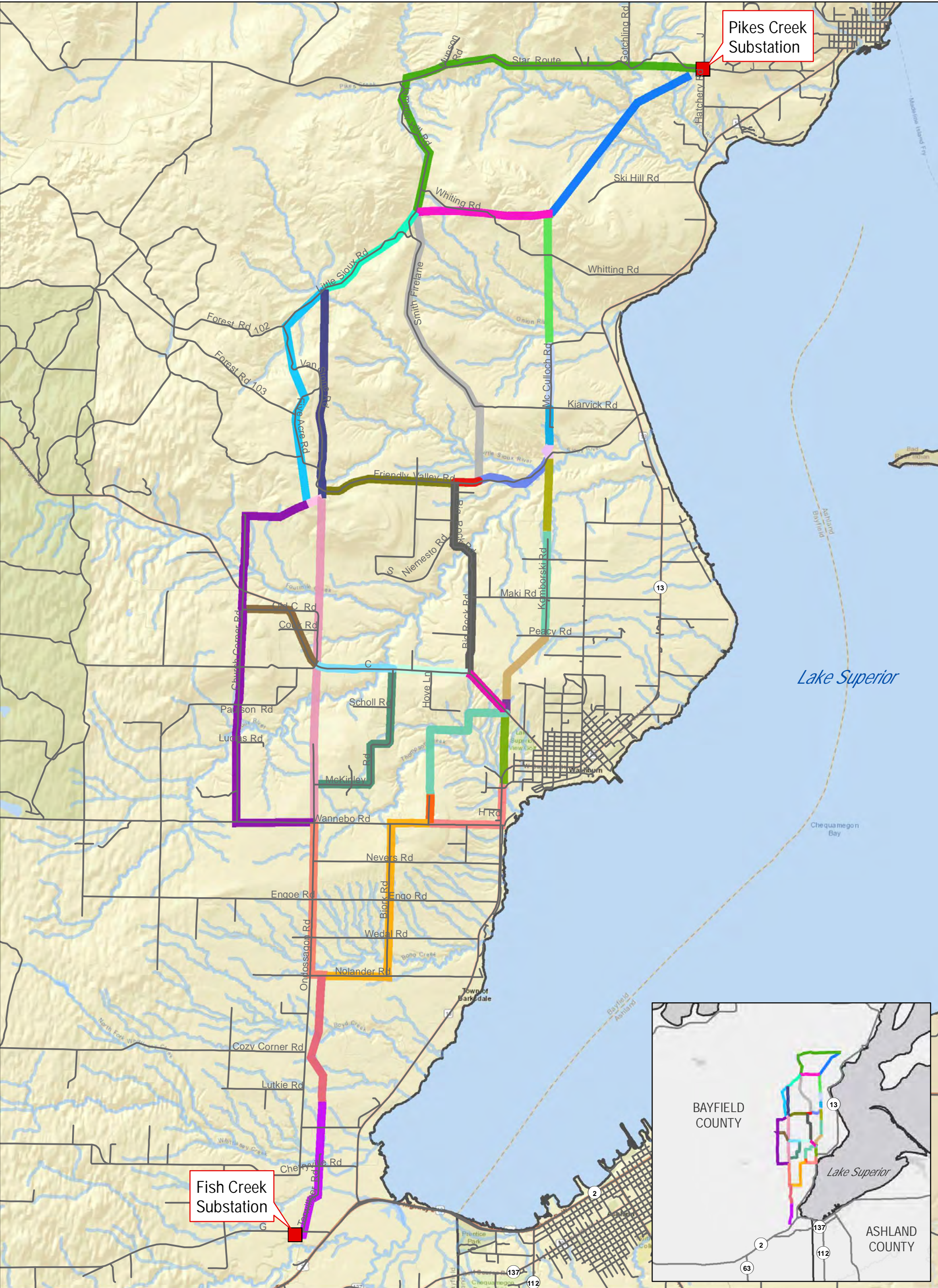


Figure 3. ROUTES CONSIDERED
BAYFIELD SECOND CIRCUIT TRANSMISSION LINE PROJECT



- Proposed Substations
- County
- Routes Considered
- Roads
- Streams



Figure 4
Project Related Data

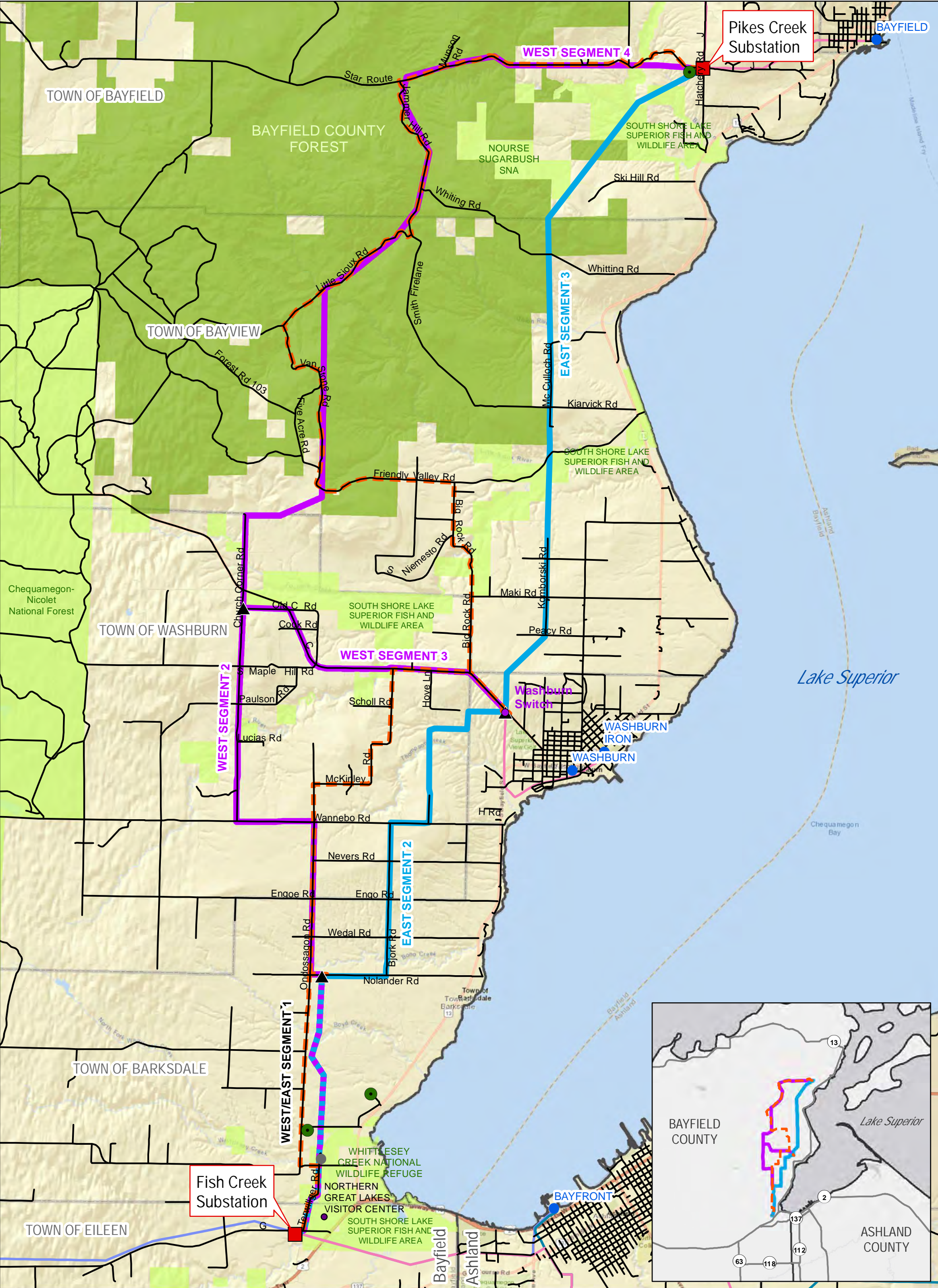


Figure 4. PROJECT RELATED DATA

BAYFIELD SECOND CIRCUIT TRANSMISSION LINE PROJECT

This information is believed to be correct, but is subject to change and carries no warranty. It is intended for reference purposes only. Applicant owned and operated facility locations are approximate. Data courtesy of Xcel Energy, ESRI, WDNR, Merjent, NPMS and ATC.

JANUARY 2019

Proposed Substations

Potential Laydown Yards

Xcel Energy Substation

DPC Substation

Segment Nodes

West Route

East Route

Bypass Lines

Roads

Existing Transmission Lines

34.5 kV

88 kV

115 kV

Protected Lands (USFS, USFWS, WDNR)

Bayfield County Forest

Township

County

0 0.5 1 2 Miles