

**Figure 4a. PROJECT RELATED DATA
EAST ROUTE**

BAYFIELD SECOND CIRCUIT TRANSMISSION LINE PROJECT



This information is believed to be correct, but is subject to change and carries no warranty. It is intended for reference purposes only. Applicant owned and operated facility locations are approximate. Data courtesy of Xcel Energy, Bayfield County, ESRI, WDNR, Merjent, NPMS, DPC, WhiteStar and ATC.

○ Proposed Structures	● House	■ East Route Corridor
▲ Segment Nodes	● Agricultural Bldg.	■ Bypass Corridor
● Northern Great Lakes Visitor Center	● Other Bldg.	■ Substation Footprint
■ East Route	● Confined Dairy Operations	■ Protected Lands (USFS, USFWS, WDNR)
■ Bypass Lines	● Washburn Switch	■ Bayfield County Forest
■ Pipeline	● Potential Laydown Yards	■ Section
■ Existing Distribution	● Xcel Energy Substation	■ Township
■ Off ROW Access Road	● DPC Substation	■ Parcel Boundary

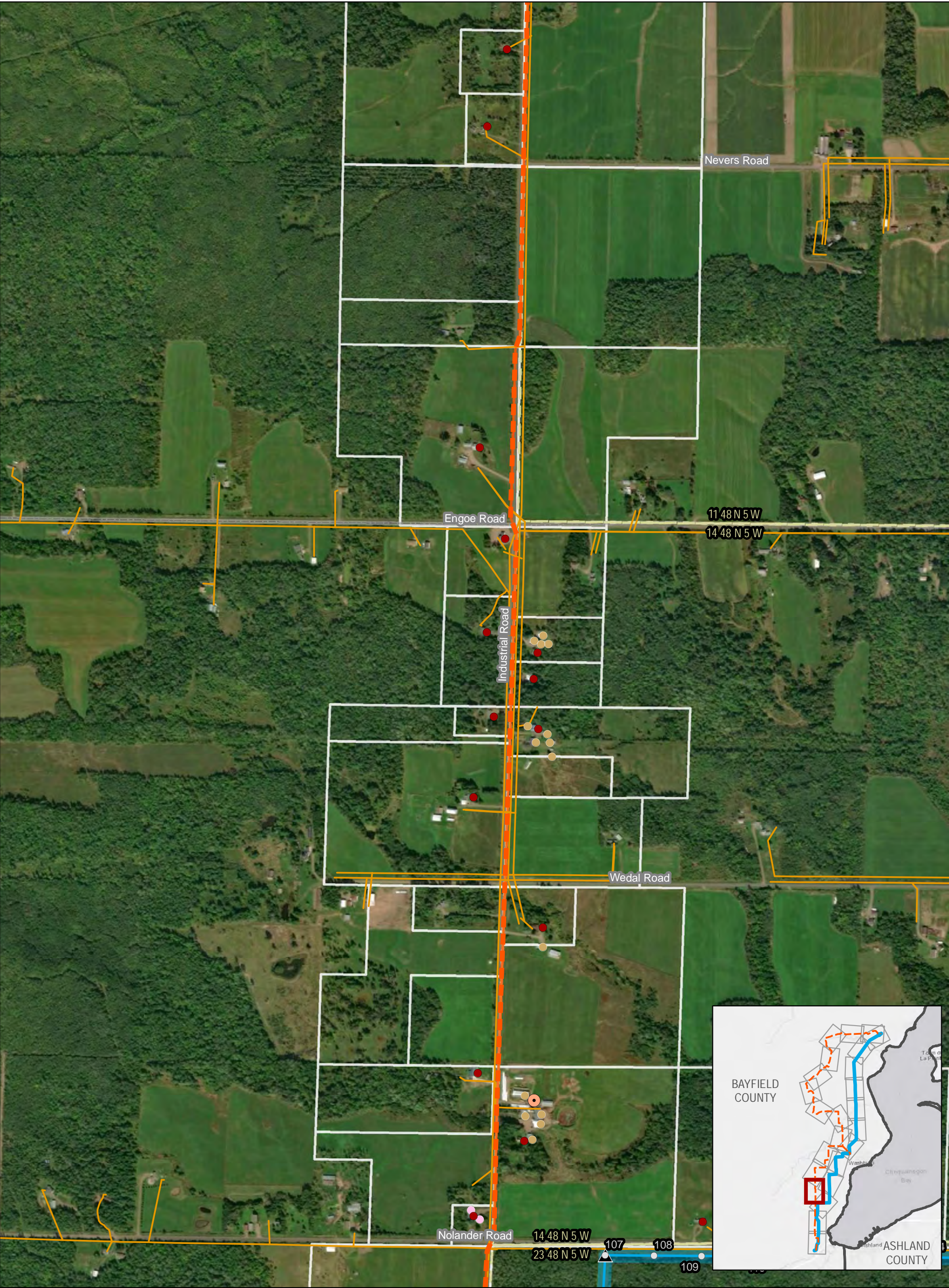


Figure 4a. PROJECT RELATED DATA
EAST ROUTE

BAYFIELD SECOND CIRCUIT TRANSMISSION LINE PROJECT



This information is believed to be correct, but is subject to change and carries no warranty. It is intended for reference purposes only. Applicant owned and operated facility locations are approximate. Data courtesy of Xcel Energy, Bayfield County, ESRI, WDNR, Merjent, NPMS, DPC, WhiteStar and ATC.

<ul style="list-style-type: none">○ Proposed Structures▲ Segment Nodes● Northern Great Lakes Visitor Center~ East Route~ Bypass Lines~ Pipeline~ Existing Distribution~ Off ROW Access Road	<ul style="list-style-type: none">● House● Agricultural Bldg.● Other Bldg.● Confined Dairy Operations● Washburn Switch● Potential Laydown Yards● Xcel Energy Substation● DPC Substation	<ul style="list-style-type: none">~ East Route Corridor~ Bypass Corridor~ Substation Footprint~ Protected Lands (USFS, USFWS, WDNR)~ Bayfield County Forest~ Section~ Township~ Parcel Boundary
--	--	--

0 240 480 960 Feet

N

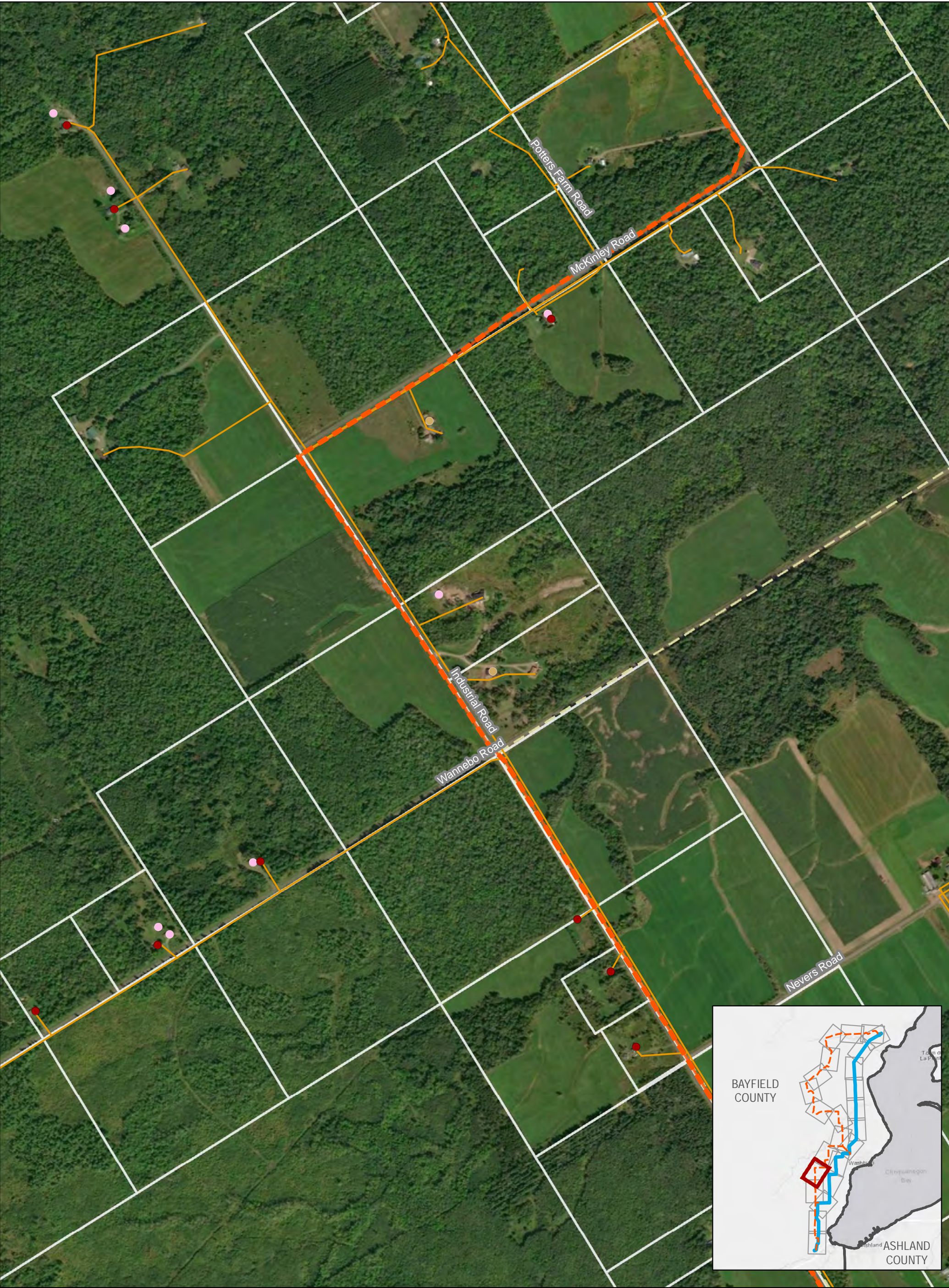


Figure 4a. PROJECT RELATED DATA
EAST ROUTE

BAYFIELD SECOND CIRCUIT TRANSMISSION LINE PROJECT



This information is believed to be correct, but is subject to change and carries no warranty. It is intended for reference purposes only. Applicant owned and operated facility locations are approximate. Data courtesy of Xcel Energy, Bayfield County, ESRI, WDNR, Merjent, NPMS, DPC, WhiteStar and ATC.

○ Proposed Structures	● House	East Route Corridor
▲ Segment Nodes	● Agricultural Bldg.	Bypass Corridor
● Northern Great Lakes Visitor Center	● Other Bldg.	Substation Footprint
East Route	● Confined Dairy Operations	Protected Lands (USFS, USFWS, WDNR)
Bypass Lines	● Washburn Switch	Bayfield County Forest
Pipeline	● Potential Laydown Yards	Section
Existing Distribution	● Xcel Energy Substation	Township
Off ROW Access Road	● DPC Substation	Parcel Boundary

0 240 480 960 Feet

N

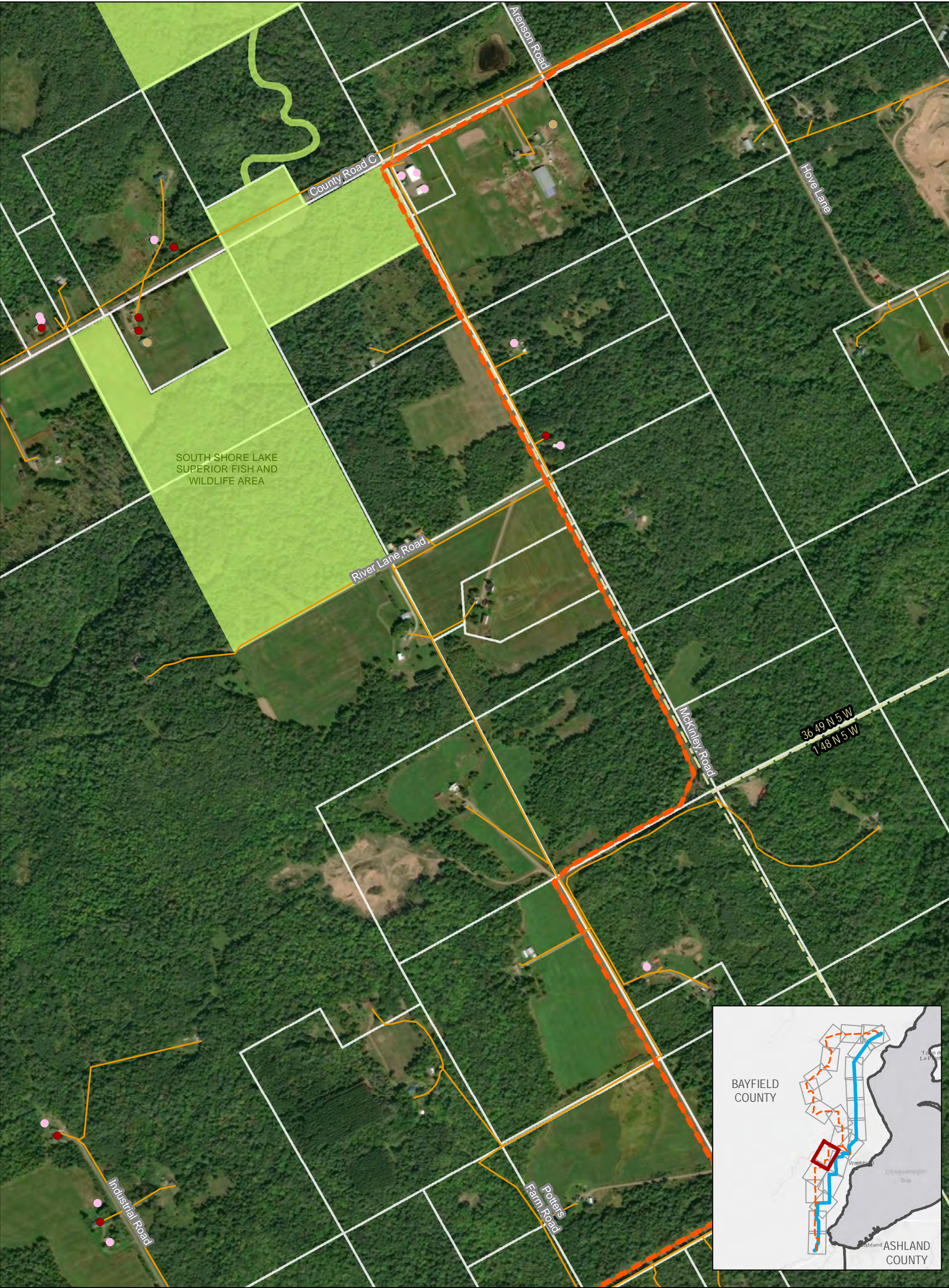


Figure 4a. PROJECT RELATED DATA

EAST ROUTE

BAYFIELD SECOND CIRCUIT TRANSMISSION LINE PROJECT

PAGE 15 OF 24

JANUARY 2019

This information is believed to be correct, but is subject to change and carries no warranty. It is intended for reference purposes only. Applicant owned and operated facility locations are approximate. Data courtesy of Xcel Energy, Bayfield County, ESRI, WDNR, Merjent, NPMS, DPC, WhiteStar and ATC.

○

Proposed Structures

▲

Segment Nodes

●

Northern Great Lakes Visitor Center

East Route

Bypass Lines

Pipeline

Existing Distribution

Off ROW Access Road

●

House

●

Agricultural Bldg.

●

Other Bldg.

●

Confined Dairy Operations

●

Washburn Switch

●

Potential Laydown Yards

●

Xcel Energy Substation

●

DPC Substation

East Route Corridor

Bypass Corridor

Substation Footprint

Protected Lands (USFS, USFWS, WDNR)

Bayfield County Forest

Section

Township

Parcel Boundary

0

240

480

960 Feet

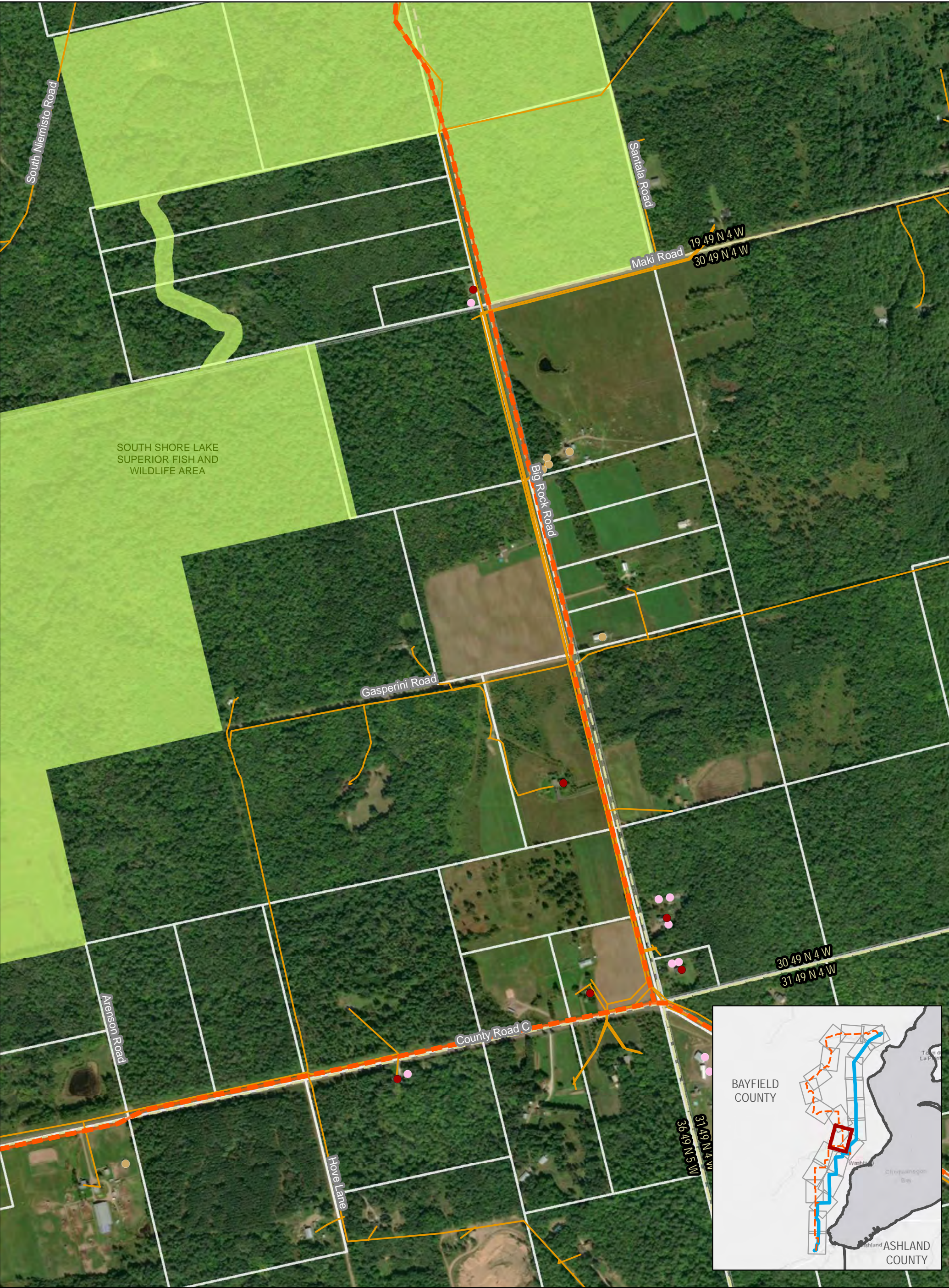


Figure 4a. PROJECT RELATED DATA

EAST ROUTE

BAYFIELD SECOND CIRCUIT TRANSMISSION LINE PROJECT

PAGE 16 OF 24

JANUARY 2019

- Proposed Structures
- ▲ Segment Nodes
- Northern Great Lakes Visitor Center
- ~ East Route
- ~ Bypass Lines
- ~ Pipeline
- ~ Existing Distribution
- ~ Off ROW Access Road

- House
- Agricultural Bldg.
- Other Bldg.
- Confined Dairy Operations
- Washburn Switch
- Potential Laydown Yards
- Xcel Energy Substation
- DPC Substation

- ~ East Route Corridor
- ~ Bypass Corridor
- ~ Substation Footprint
- ~ Protected Lands (USFS, USFWS, WDNR)
- ~ Bayfield County Forest
- ~ Section
- ~ Township
- ~ Parcel Boundary

0 240 480 960 Feet

This information is believed to be correct, but is subject to change and carries no warranty. It is intended for reference purposes only. Applicant owned and operated facility locations are approximate. Data courtesy of Xcel Energy, Bayfield County, ESRI, WDNR, Merjent, NPMS, DPC, WhiteStar and ATC.

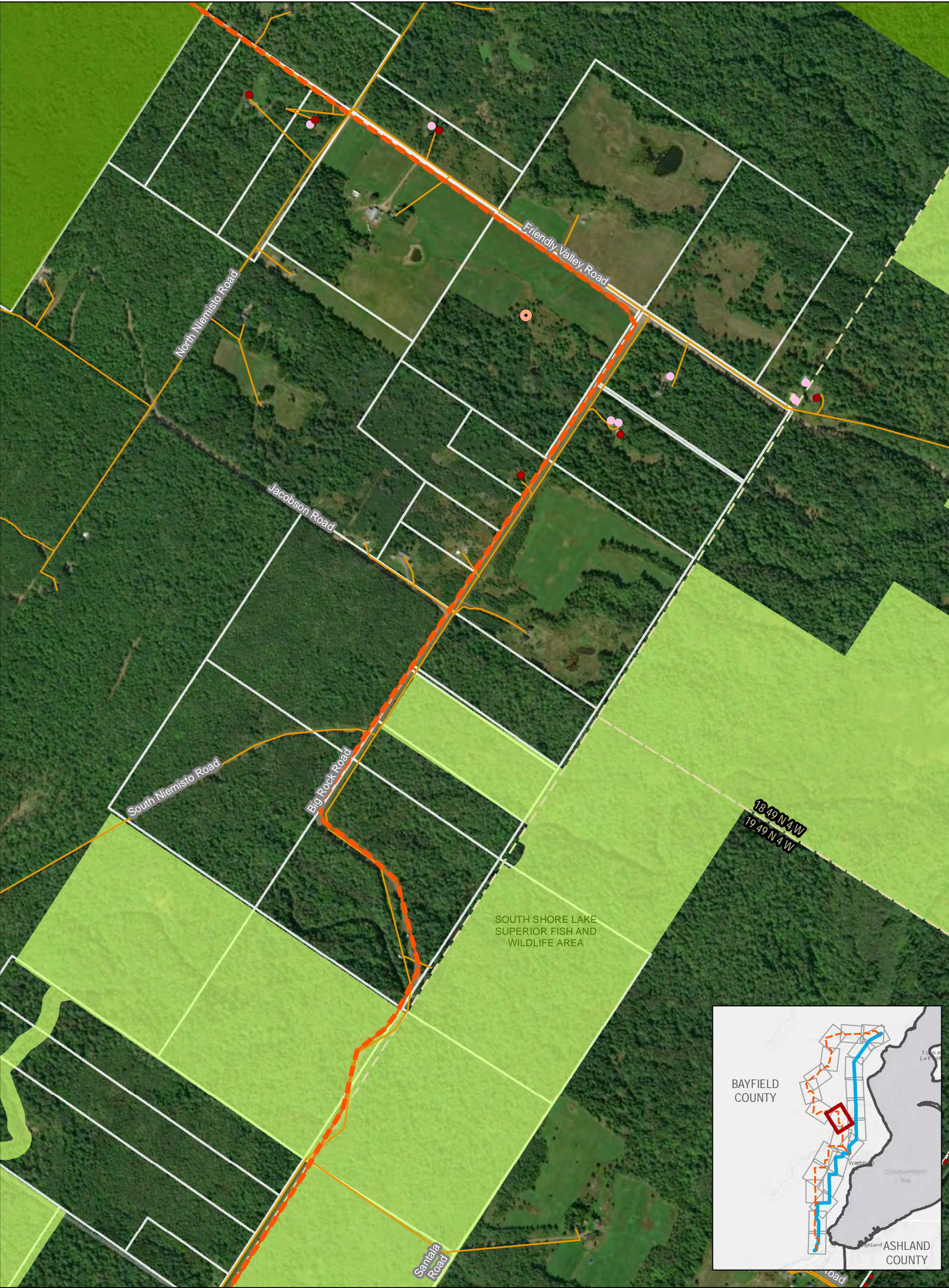


Figure 4a. PROJECT RELATED DATA
EAST ROUTE

BAYFIELD SECOND CIRCUIT TRANSMISSION LINE PROJECT



This information is believed to be correct, but is subject to change and carries no warranty. It is intended for reference purposes only. Applicant owned and operated facility locations are approximate. Data courtesy of Xcel Energy, Bayfield County, ESRI, WDNR, Merjent, NPMS, DPC, WhiteStar and ATC.

○ Proposed Structures	● House	East Route Corridor
▲ Segment Nodes	● Agricultural Bldg.	Bypass Corridor
● Northern Great Lakes Visitor Center	● Other Bldg.	Substation Footprint
East Route	● Confined Dairy Operations	Protected Lands (USFS, USFWS, WDNR)
Bypass Lines	● Washburn Switch	Bayfield County Forest
Pipeline	● Potential Laydown Yards	Section
Existing Distribution	● Xcel Energy Substation	Township
Off ROW Access Road	● DPC Substation	Parcel Boundary

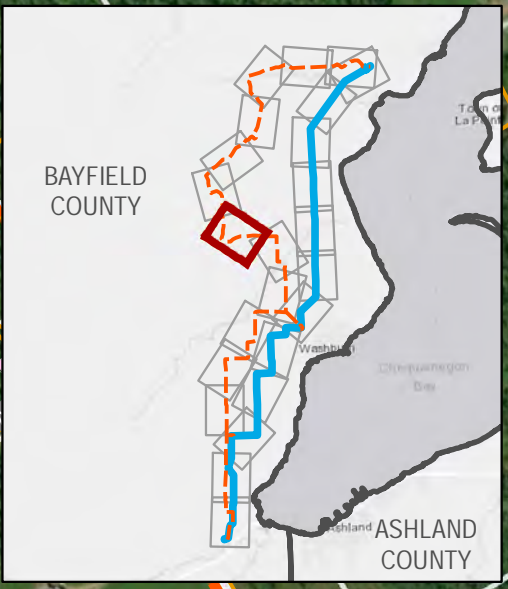
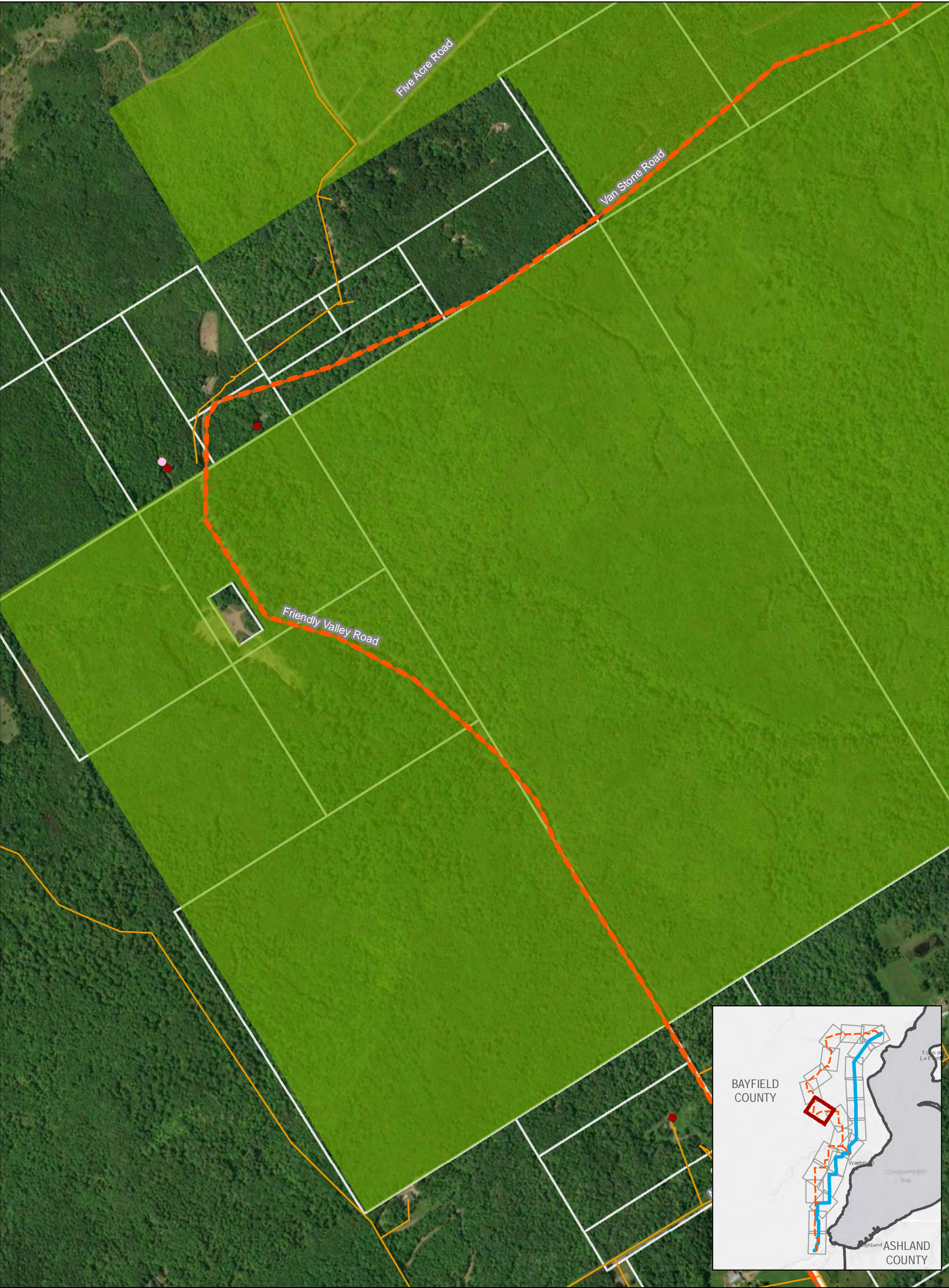


Figure 4a. PROJECT RELATED DATA
EAST ROUTE

BAYFIELD SECOND CIRCUIT TRANSMISSION LINE PROJECT



This information is believed to be correct, but is subject to change and carries no warranty. It is intended for reference purposes only. Applicant owned and operated facility locations are approximate. Data courtesy of Xcel Energy, Bayfield County, ESRI, WDNR, Merjent, NPMS, DPC, WhiteStar and ATC.

○ Proposed Structures	● House	East Route Corridor
▲ Segment Nodes	● Agricultural Bldg.	Bypass Corridor
● Northern Great Lakes Visitor Center	● Other Bldg.	Substation Footprint
East Route	● Confined Dairy Operations	Protected Lands (USFS, USFWS, WDNR)
Bypass Lines	● Washburn Switch	Bayfield County Forest
Pipeline	● Potential Laydown Yards	Section
Existing Distribution	● Xcel Energy Substation	Township
Off ROW Access Road	● DPC Substation	Parcel Boundary

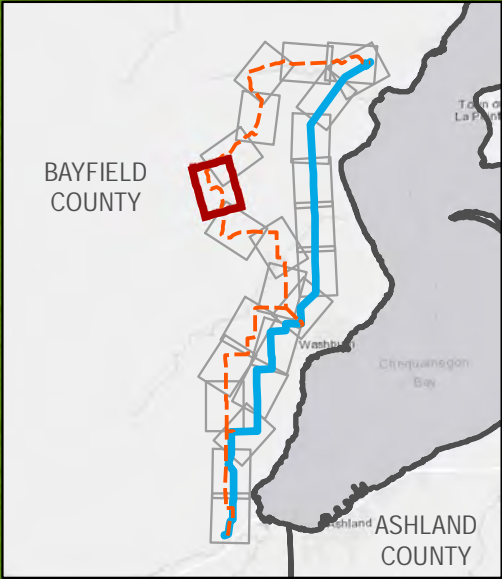


Figure 4a. PROJECT RELATED DATA
EAST ROUTE

BAYFIELD SECOND CIRCUIT TRANSMISSION LINE PROJECT



This information is believed to be correct, but is subject to change and carries no warranty. It is intended for reference purposes only. Applicant owned and operated facility locations are approximate. Data courtesy of Xcel Energy, Bayfield County, ESRI, WDNR, Merjent, NPMS, DPC, WhiteStar and ATC.

<ul style="list-style-type: none">○ Proposed Structures▲ Segment Nodes● Northern Great Lakes Visitor Center~ East Route~ Bypass Lines~ Pipeline~ Existing Distribution~ Off ROW Access Road	<ul style="list-style-type: none">● House● Agricultural Bldg.● Other Bldg.● Confined Dairy Operations● Washburn Switch● Potential Laydown Yards● Xcel Energy Substation● DPC Substation	<ul style="list-style-type: none">~ East Route Corridor~ Bypass Corridor□ Substation Footprint■ Protected Lands (USFS, USFWS, WDNR)■ Bayfield County Forest~ Section□ Township□ Parcel Boundary
--	--	--

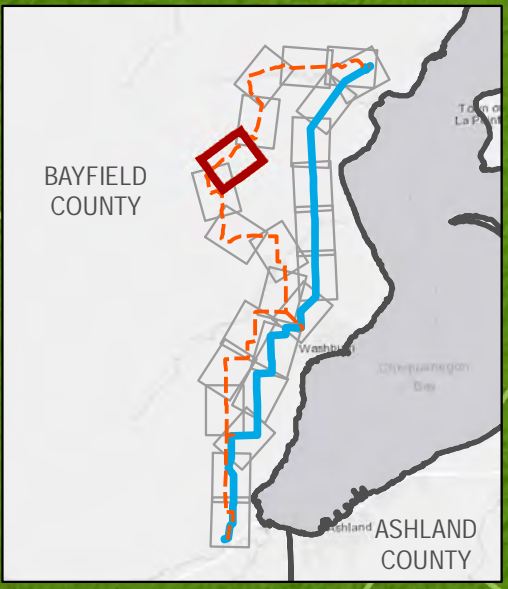
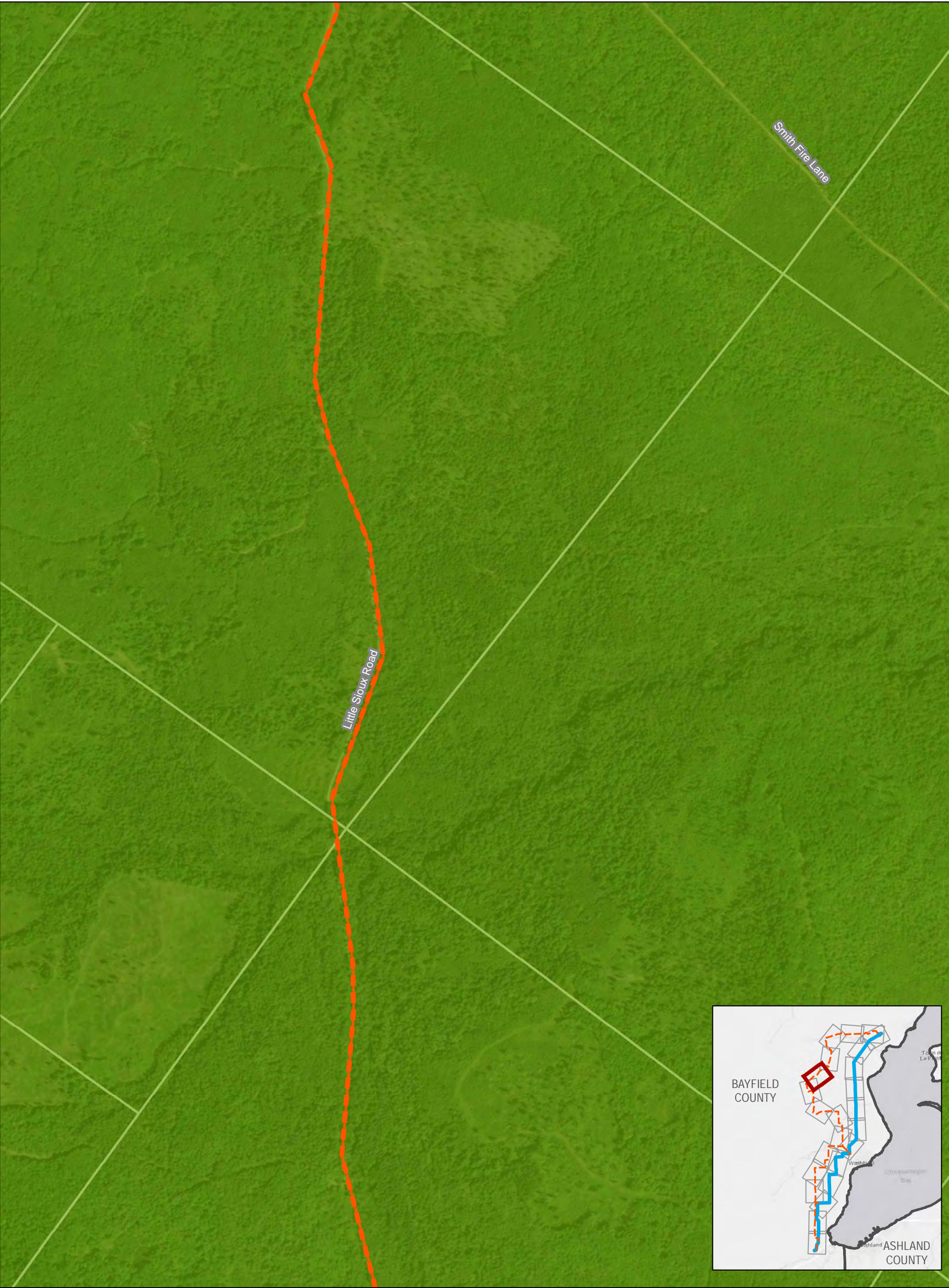


Figure 4a. PROJECT RELATED DATA
EAST ROUTE

BAYFIELD SECOND CIRCUIT TRANSMISSION LINE PROJECT



This information is believed to be correct, but is subject to change and carries no warranty. It is intended for reference purposes only. Applicant owned and operated facility locations are approximate. Data courtesy of Xcel Energy, Bayfield County, ESRI, WDNR, Merjent, NPMS, DPC, WhiteStar and ATC.

<ul style="list-style-type: none">○ Proposed Structures▲ Segment Nodes● Northern Great Lakes Visitor Center~ East Route↗ Bypass Lines↗ Pipeline~ Existing Distribution~ Off ROW Access Road	<ul style="list-style-type: none">● House● Agricultural Bldg.● Other Bldg.● Confined Dairy Operations● Washburn Switch● Potential Laydown Yards● Xcel Energy Substation● DPC Substation	<ul style="list-style-type: none">~ East Route Corridor~ Bypass Corridor□ Substation Footprint■ Protected Lands (USFS, USFWS, WDNR)■ Bayfield County Forest~ Section□ Township□ Parcel Boundary
--	--	--



Figure 4a. PROJECT RELATED DATA
EAST ROUTE

BAYFIELD SECOND CIRCUIT TRANSMISSION LINE PROJECT



This information is believed to be correct, but is subject to change and carries no warranty. It is intended for reference purposes only. Applicant owned and operated facility locations are approximate. Data courtesy of Xcel Energy, Bayfield County, ESRI, WDNR, Merjent, NPMS, DPC, WhiteStar and ATC.

<ul style="list-style-type: none">○ Proposed Structures▲ Segment Nodes● Northern Great Lakes Visitor Center~ East Route↗ Bypass Lines↗ Pipeline~ Existing Distribution~ Off ROW Access Road	<ul style="list-style-type: none">● House● Agricultural Bldg.● Other Bldg.● Confined Dairy Operations● Washburn Switch● Potential Laydown Yards● Xcel Energy Substation● DPC Substation	<ul style="list-style-type: none">~ East Route Corridor~ Bypass Corridor□ Substation Footprint■ Protected Lands (USFS, USFWS, WDNR)■ Bayfield County Forest~ Section□ Township□ Parcel Boundary
--	--	--

0 240 480 960 Feet

N

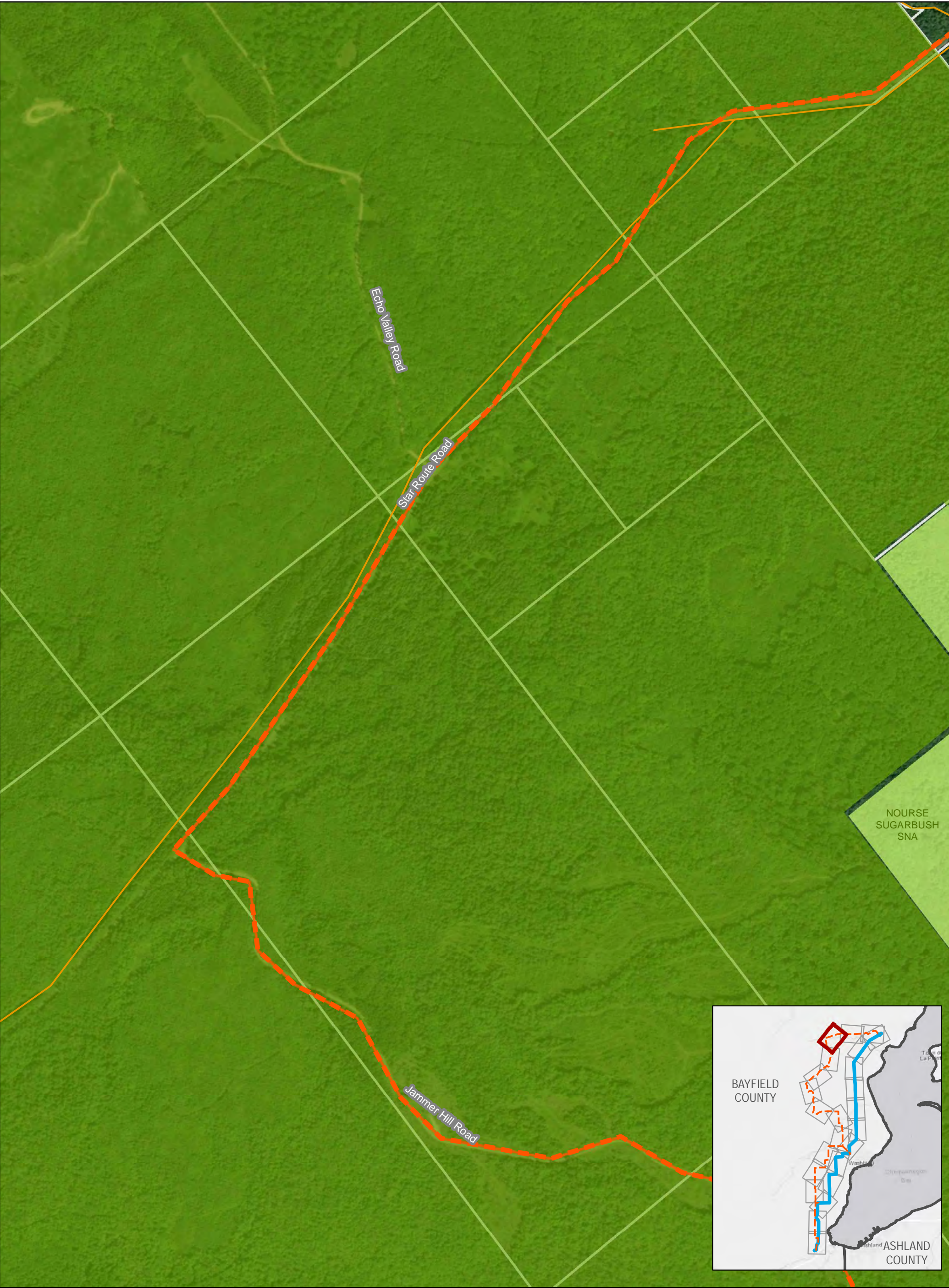


Figure 4a. PROJECT RELATED DATA
EAST ROUTE

BAYFIELD SECOND CIRCUIT TRANSMISSION LINE PROJECT



This information is believed to be correct, but is subject to change and carries no warranty. It is intended for reference purposes only. Applicant owned and operated facility locations are approximate. Data courtesy of Xcel Energy, Bayfield County, ESRI, WDNR, Merjent, NPMS, DPC, WhiteStar and ATC.

<ul style="list-style-type: none">○ Proposed Structures▲ Segment Nodes● Northern Great Lakes Visitor Center~ East Route~ Bypass Lines~ Pipeline~ Existing Distribution~ Off ROW Access Road	<ul style="list-style-type: none">● House● Agricultural Bldg.● Other Bldg.● Confined Dairy Operations● Washburn Switch● Potential Laydown Yards● Xcel Energy Substation● DPC Substation	<ul style="list-style-type: none">~ East Route Corridor~ Bypass Corridor□ Substation Footprint■ Protected Lands (USFS, USFWS, WDNR)■ Bayfield County Forest~ Section□ Township□ Parcel Boundary
--	--	--

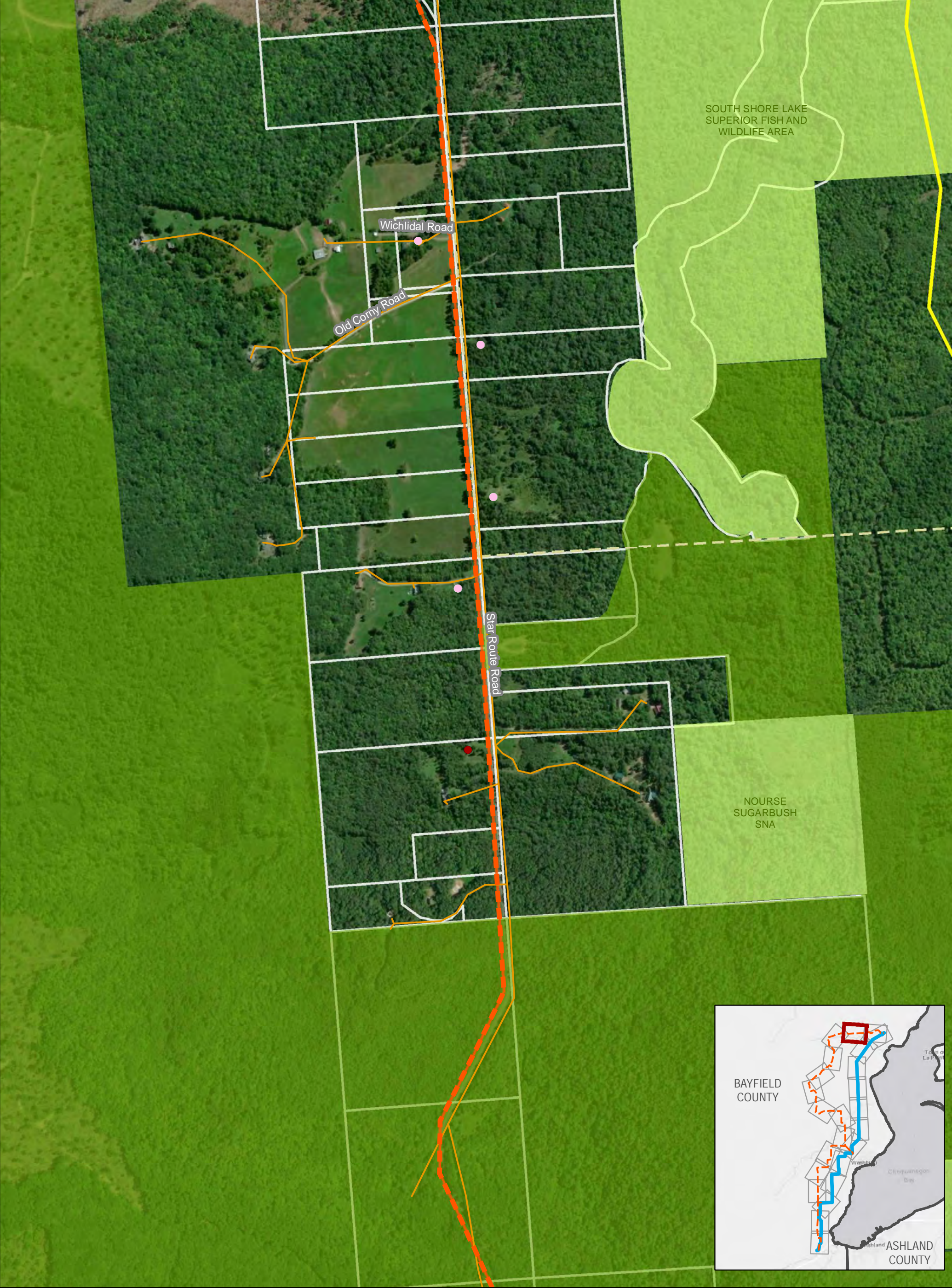


Figure 4a. PROJECT RELATED DATA
EAST ROUTE

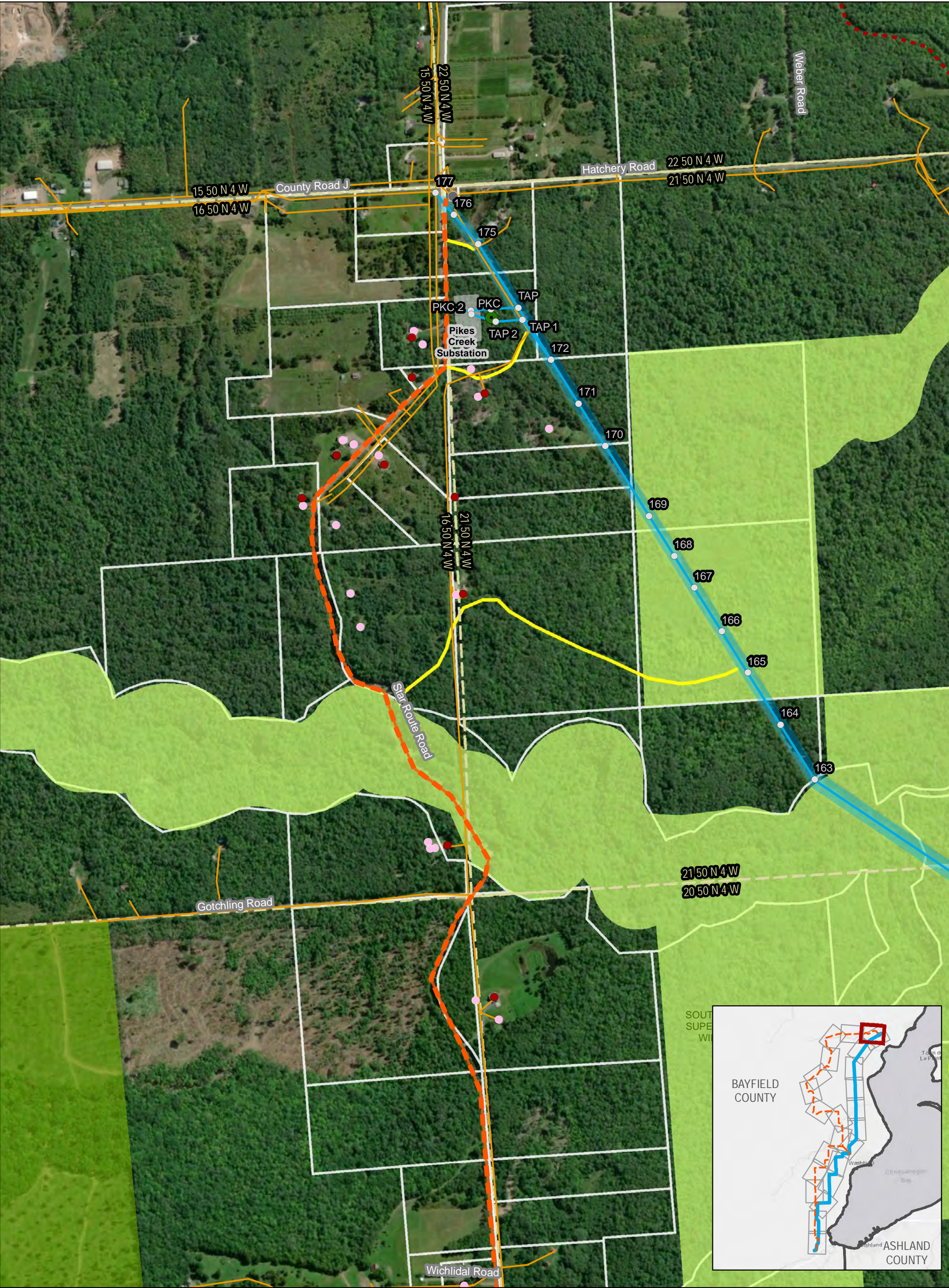
BAYFIELD SECOND CIRCUIT TRANSMISSION LINE PROJECT



This information is believed to be correct, but is subject to change and carries no warranty. It is intended for reference purposes only. Applicant owned and operated facility locations are approximate. Data courtesy of Xcel Energy, Bayfield County, ESRI, WDNR, Merjent, NPMS, DPC, WhiteStar and ATC.

○ Proposed Structures	● House	East Route Corridor
▲ Segment Nodes	● Agricultural Bldg.	Bypass Corridor
● Northern Great Lakes Visitor Center	● Other Bldg.	Substation Footprint
East Route	● Confined Dairy Operations	Protected Lands (USFS, USFWS, WDNR)
Bypass Lines	● Washburn Switch	Bayfield County Forest
Pipeline	● Potential Laydown Yards	Section
Existing Distribution	● Xcel Energy Substation	Township
Off ROW Access Road	● DPC Substation	Parcel Boundary

0 240 480 960 Feet



**Figure 4a. PROJECT RELATED DATA
EAST ROUTE**

BAYFIELD SECOND CIRCUIT TRANSMISSION LINE PROJECT



This information is believed to be correct, but is subject to change and carries no warranty. It is intended for reference purposes only. Applicant owned and operated facility locations are approximate. Data courtesy of Xcel Energy, Bayfield County, ESRI, WDNR, Merjent, NPMS, DPC, WhiteStar and ATC.

○ Proposed Structures	● House	■ East Route Corridor
▲ Segment Nodes	● Agricultural Bldg.	■ Bypass Corridor
● Northern Great Lakes Visitor Center	● Other Bldg.	■ Substation Footprint
■ East Route	● Confined Dairy Operations	■ Protected Lands (USFS, USFWS, WDNR)
■ Bypass Lines	● Washburn Switch	■ Bayfield County Forest
■ Pipeline	● Potential Laydown Yards	■ Section
■ Existing Distribution	● Xcel Energy Substation	■ Township
■ Off ROW Access Road	● DPC Substation	■ Parcel Boundary

0 240 480 960 Feet