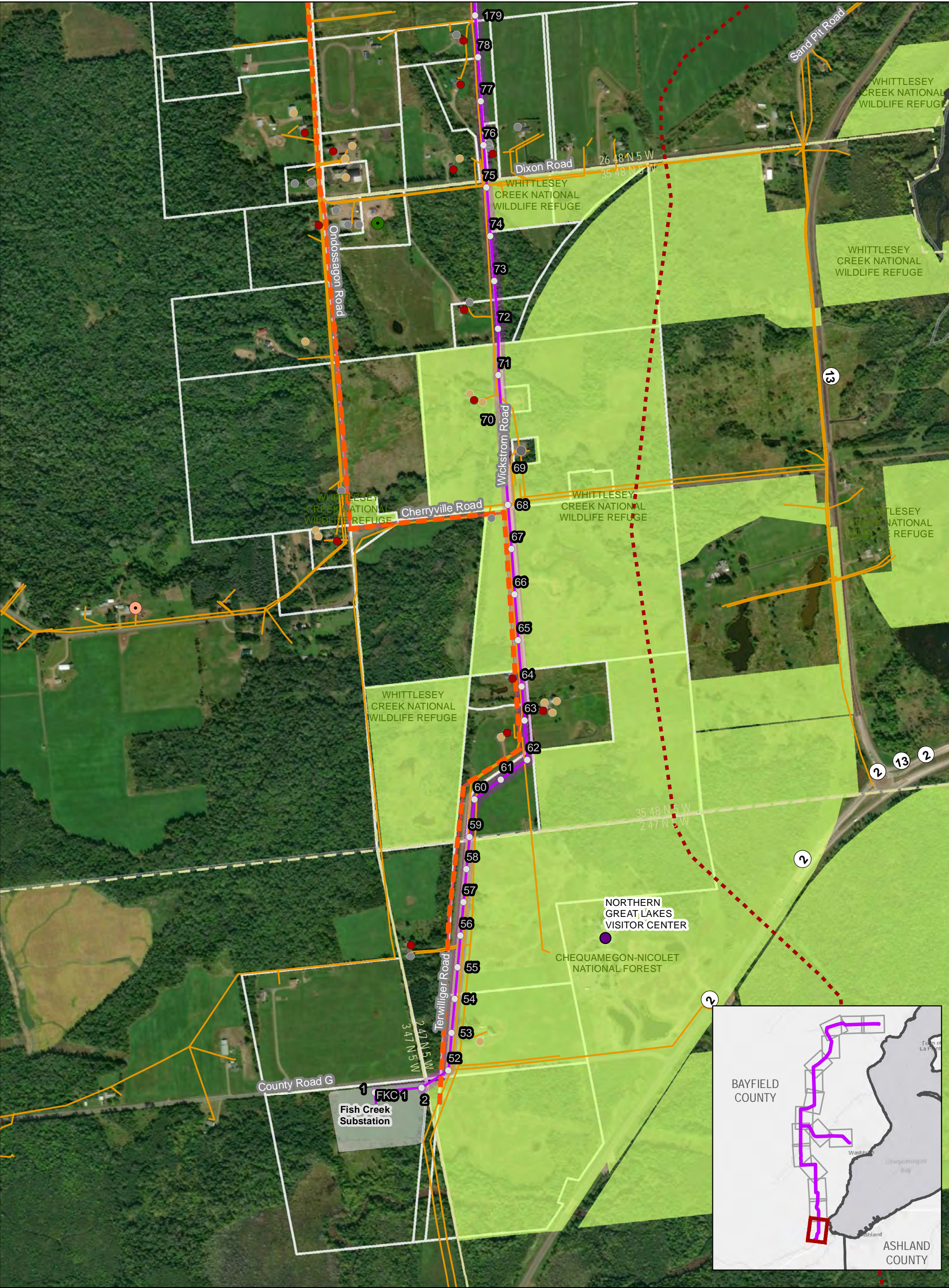


Figure 4B
Project Related Data
West Route



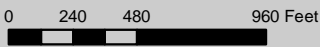
**Figure 4b. PROJECT RELATED DATA
WEST ROUTE**

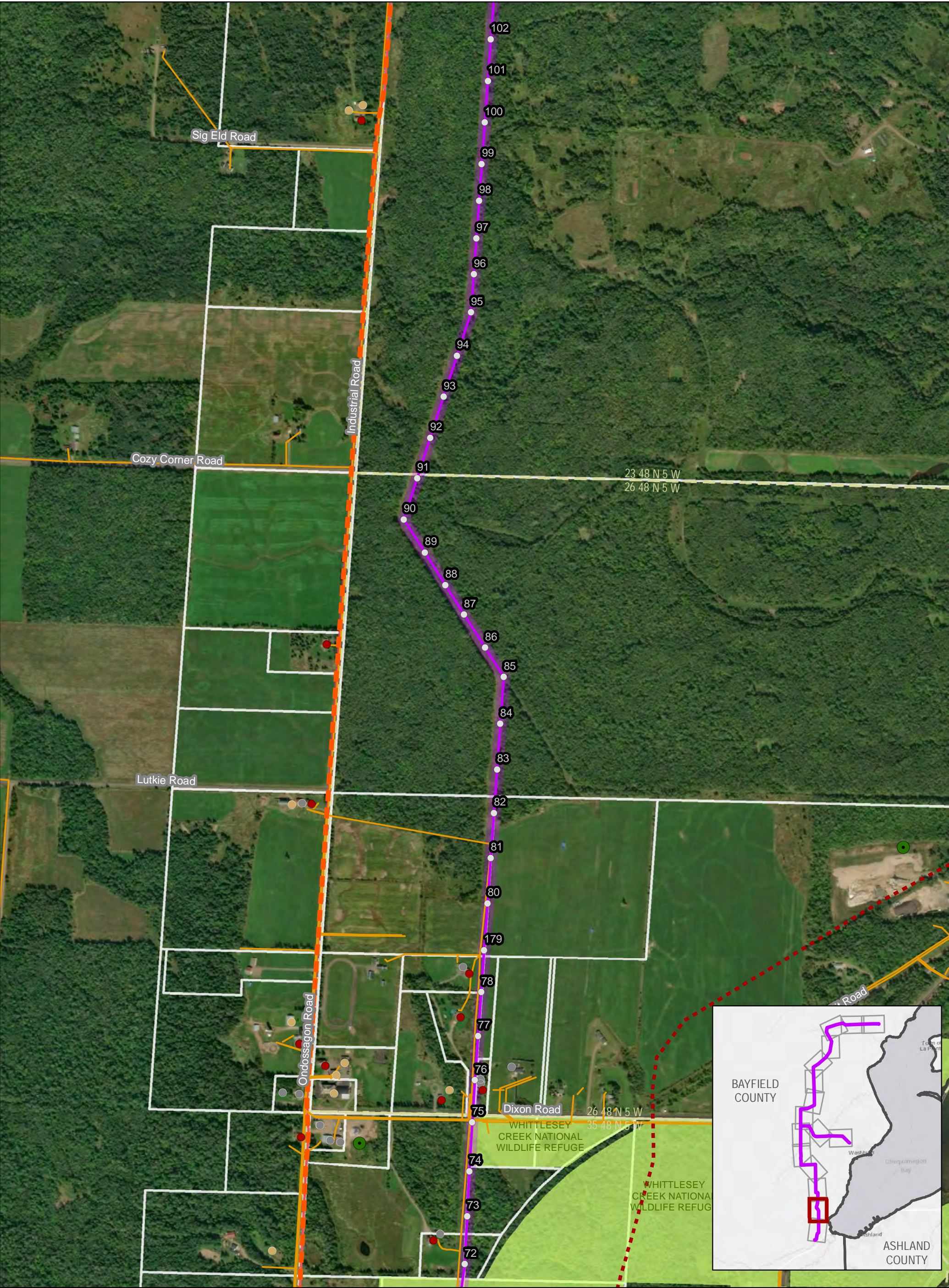
BAYFIELD SECOND CIRCUIT TRANSMISSION LINE PROJECT



This information is believed to be correct, but is subject to change and carries no warranty. It is intended for reference purposes only. Applicant owned and operated facility locations are approximate. Data courtesy of Xcel Energy, Bayfield County, ESRI, WDNR, Merjent, NPMS, DPC, WhiteStar and ATC.

| | | |
|-------------------------|-----------------------------|---------------------------------------|
| ▲ Segment Nodes | ● House | ▬ West Route Corridor |
| ▬ West Route | ● Agricultural Bldg. | ▬ Substation Footprint |
| ▬ Bypass Lines | ● Other Bldg. | ▬ Protected Lands (USFS, USFWS, WDNR) |
| ▬ Pipeline | ● Confined Dairy Operations | ▬ Bayfield County Forest |
| ▬ Existing Distribution | ● Washburn Switch | ▬ Section |
| | ● Potential Laydown Yards | ▬ Township |
| | ● Xcel Energy Substation | ▬ Parcel Boundary |
| | ● DPC Substation | |





**Figure 4b. PROJECT RELATED DATA
WEST ROUTE**

BAYFIELD SECOND CIRCUIT TRANSMISSION LINE PROJECT



This information is believed to be correct, but is subject to change and carries no warranty. It is intended for reference purposes only. Applicant owned and operated facility locations are approximate. Data courtesy of Xcel Energy, Bayfield County, ESRI, WDNR, Merjent, NPMS, DPC, WhiteStar and ATC.

- | | | |
|---------------------------|-----------------------------|-------------------------------------|
| ▲ Segment Nodes | ● House | West Route Corridor |
| West Route | ● Agricultural Bldg. | Substation Footprint |
| Bypass Lines | ● Other Bldg. | Protected Lands (USFS, USFWS, WDNR) |
| Pipeline | ● Confined Dairy Operations | Bayfield County Forest |
| Existing Distribution | ● Washburn Switch | Section |
| ● Potential Laydown Yards | ● Xcel Energy Substation | Township |
| ● DPC Substation | | Parcel Boundary |



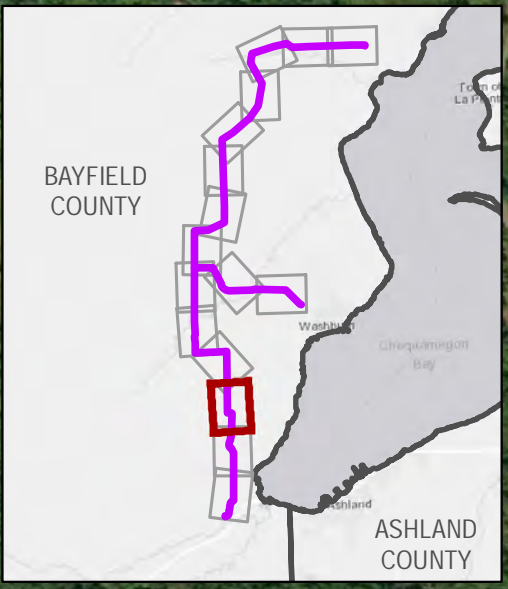
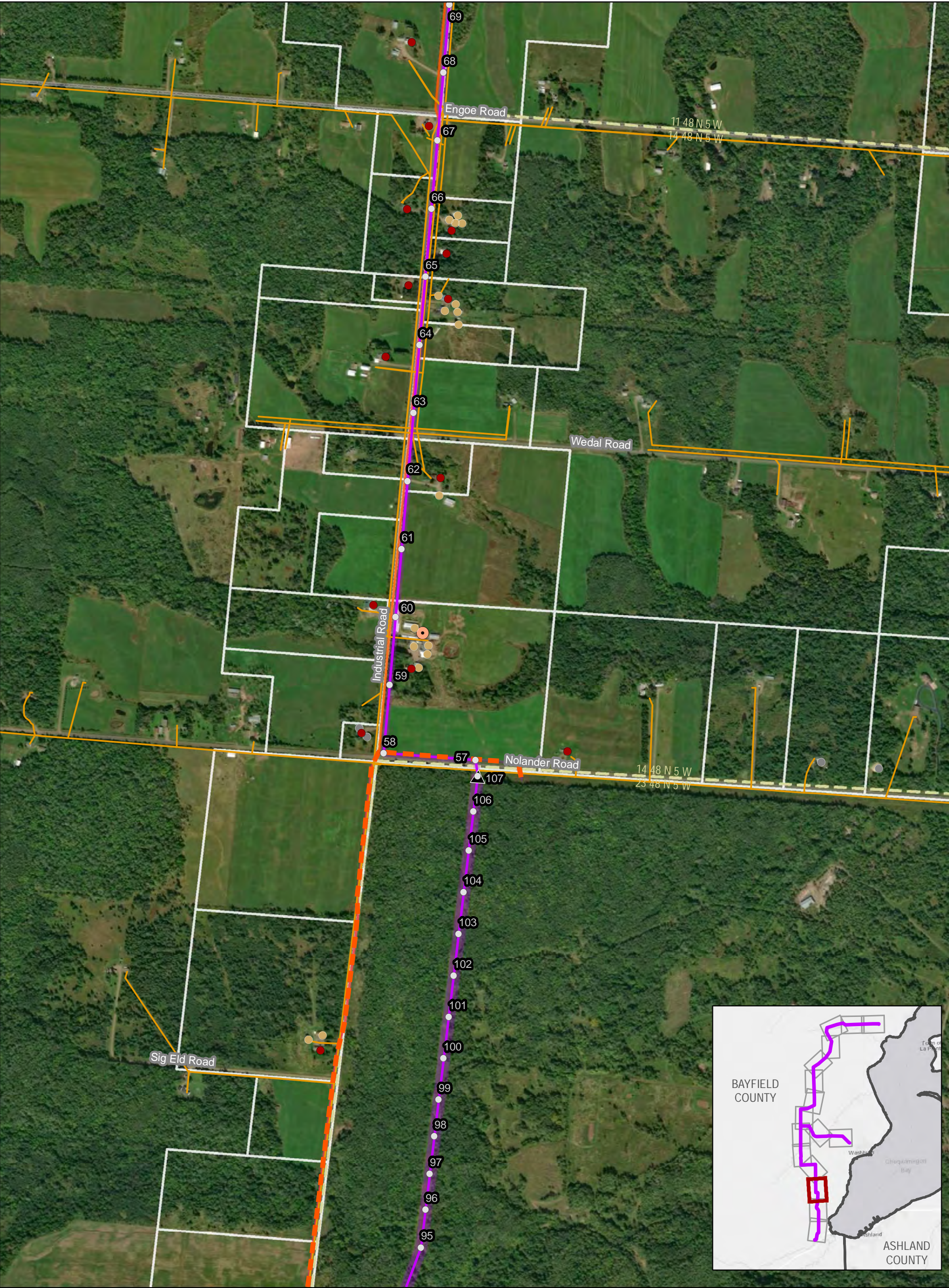


Figure 4b. PROJECT RELATED DATA
WEST ROUTE

BAYFIELD SECOND CIRCUIT TRANSMISSION LINE PROJECT



| | | |
|-------------------------|-----------------------------|---------------------------------------|
| ▲ Segment Nodes | ● House | ■ West Route Corridor |
| ~ West Route | ● Agricultural Bldg. | ■ Substation Footprint |
| ~ Bypass Lines | ● Other Bldg. | ■ Protected Lands (USFS, USFWS, WDNR) |
| ~ Pipeline | ● Confined Dairy Operations | ■ Bayfield County Forest |
| ~ Existing Distribution | ● Washburn Switch | ■ Section |
| | ● Potential Laydown Yards | ■ Township |
| | ● Xcel Energy Substation | ■ Parcel Boundary |
| | ● DPC Substation | |

0 240 480 960 Feet

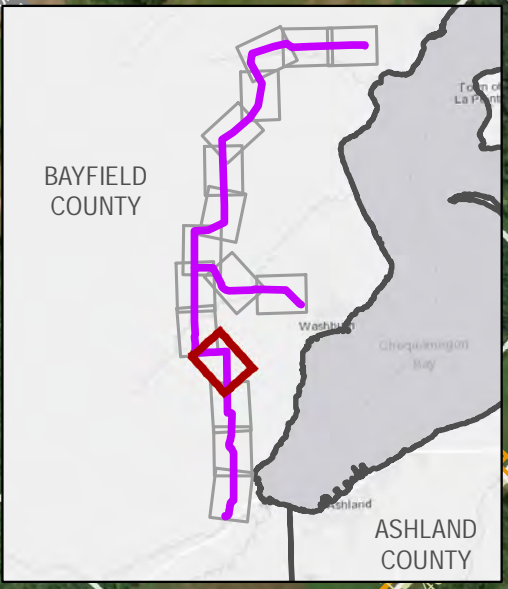
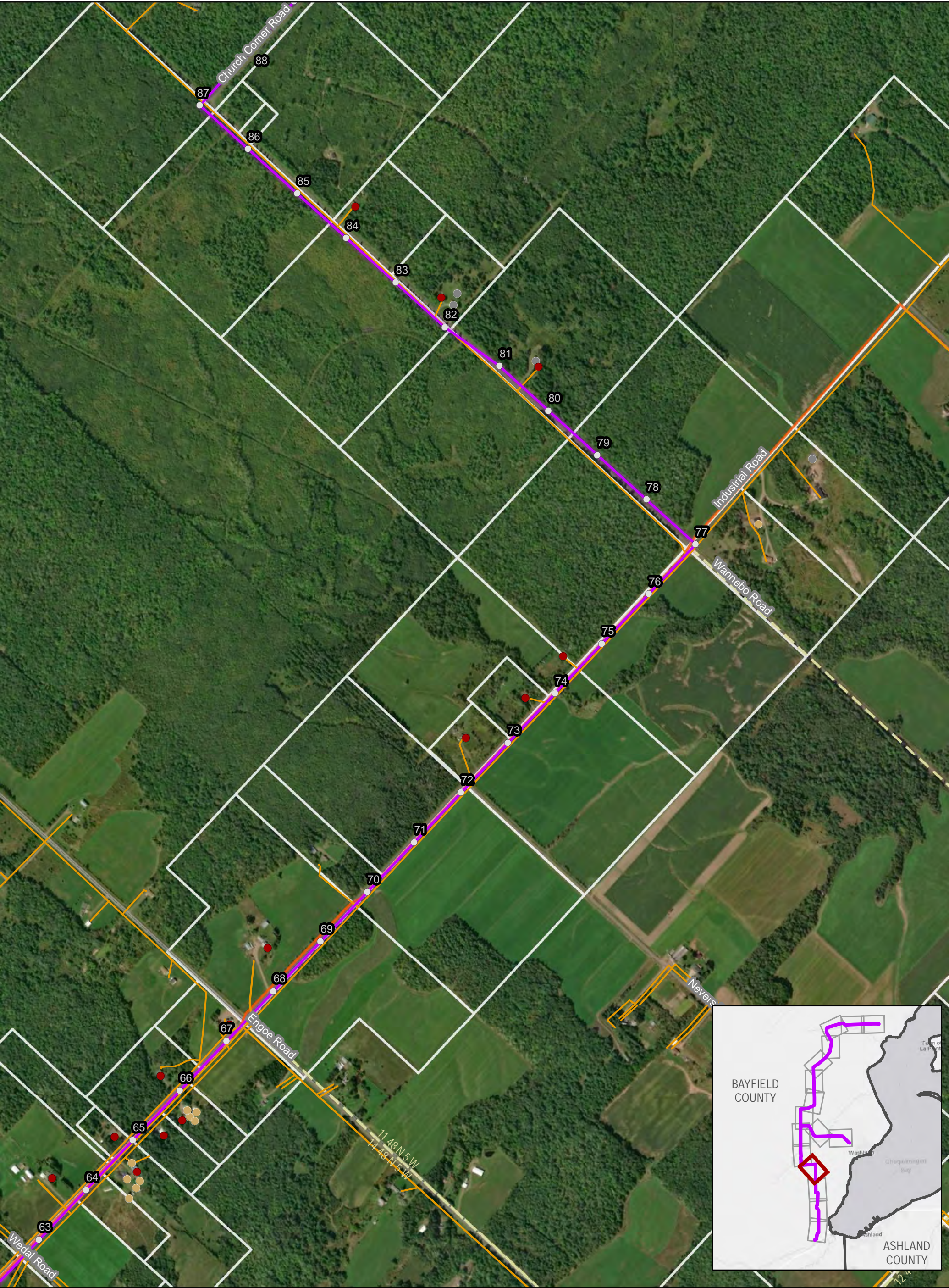


Figure 4b. PROJECT RELATED DATA

WEST ROUTE

BAYFIELD SECOND CIRCUIT TRANSMISSION LINE PROJECT

PAGE 4 OF 16

JANUARY 2019

This information is believed to be correct, but is subject to change and carries no warranty. It is intended for reference purposes only. Applicant owned and operated facility locations are approximate. Data courtesy of Xcel Energy, Bayfield County, ESRI, WDNR, Merjent, NPMS, DPC, WhiteStar and ATC.

▲ Segment Nodes

~ West Route

~ Bypass Lines

~ Pipeline

~ Existing Distribution

● House

● Agricultural Bldg.

● Other Bldg.

● Confined Dairy Operations

● Washburn Switch

● Potential Laydown Yards

● Xcel Energy Substation

● DPC Substation

■ West Route Corridor

■ Substation Footprint

■ Protected Lands (USFS, USFWS, WDNR)

■ Bayfield County Forest

■ Section

■ Township

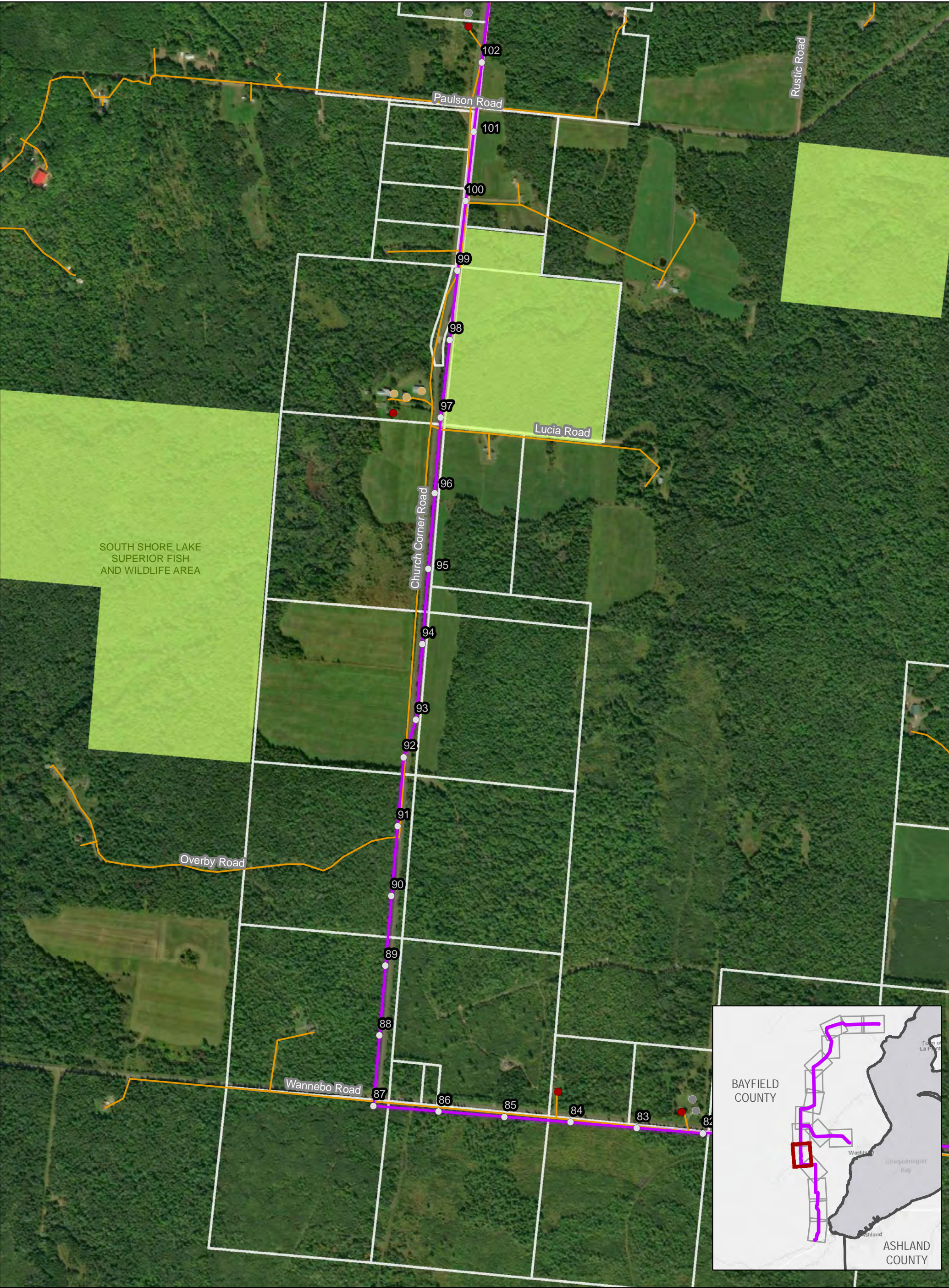
■ Parcel Boundary

0

240

480

960 Feet



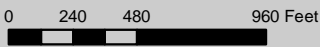
**Figure 4b. PROJECT RELATED DATA
WEST ROUTE**

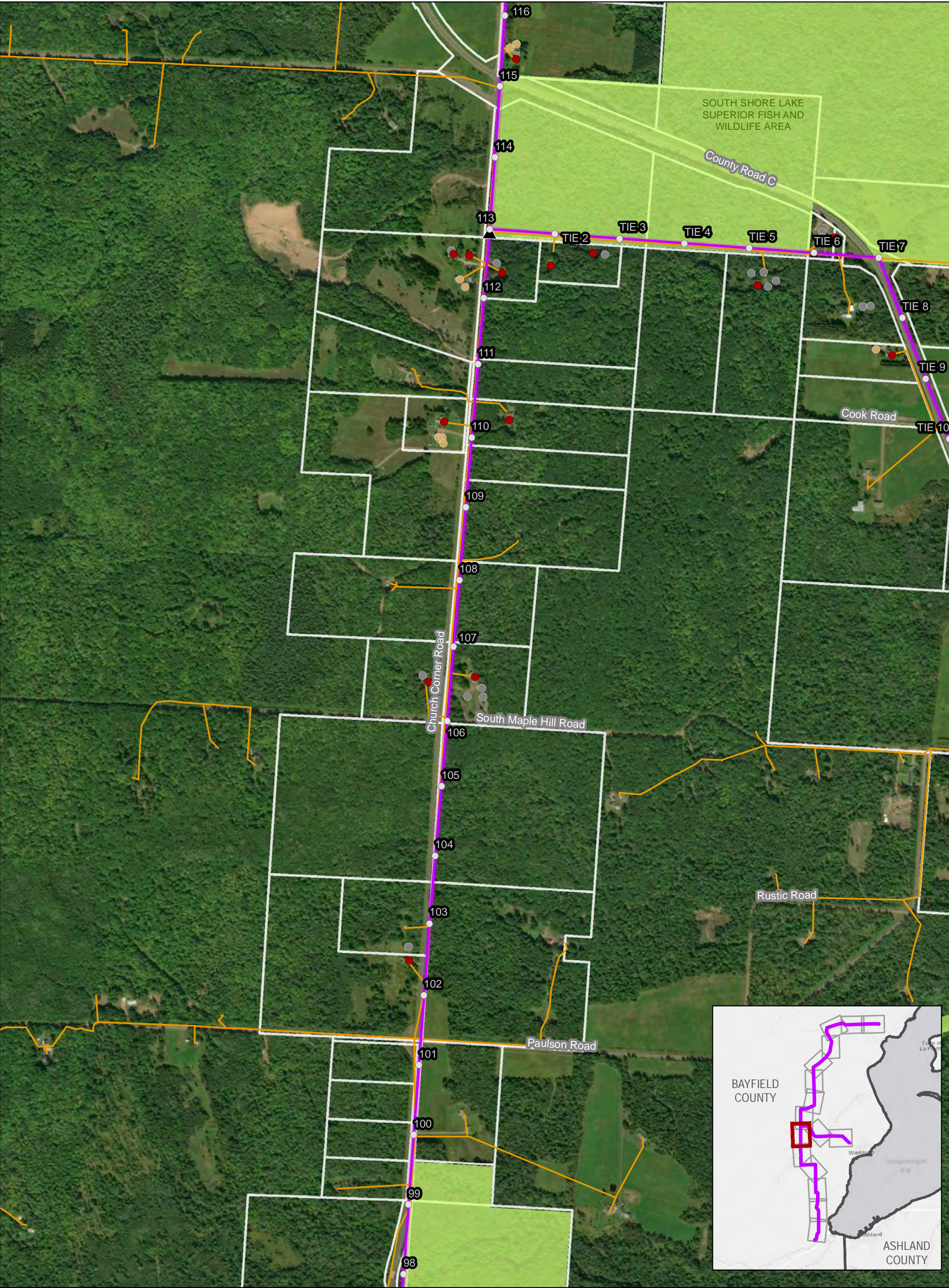
BAYFIELD SECOND CIRCUIT TRANSMISSION LINE PROJECT



This information is believed to be correct, but is subject to change and carries no warranty. It is intended for reference purposes only. Applicant owned and operated facility locations are approximate. Data courtesy of Xcel Energy, Bayfield County, ESRI, WDNR, Merjent, NPMS, DPC, WhiteStar and ATC.

- | | | |
|-----------------------|-----------------------------|-------------------------------------|
| ▲ Segment Nodes | ● House | West Route Corridor |
| West Route | ● Agricultural Bldg. | Substation Footprint |
| Bypass Lines | ● Other Bldg. | Protected Lands (USFS, USFWS, WDNR) |
| Pipeline | ● Confined Dairy Operations | Bayfield County Forest |
| Existing Distribution | ● Washburn Switch | Section |
| | ● Potential Laydown Yards | Township |
| | ● Xcel Energy Substation | Parcel Boundary |
| | ● DPC Substation | |





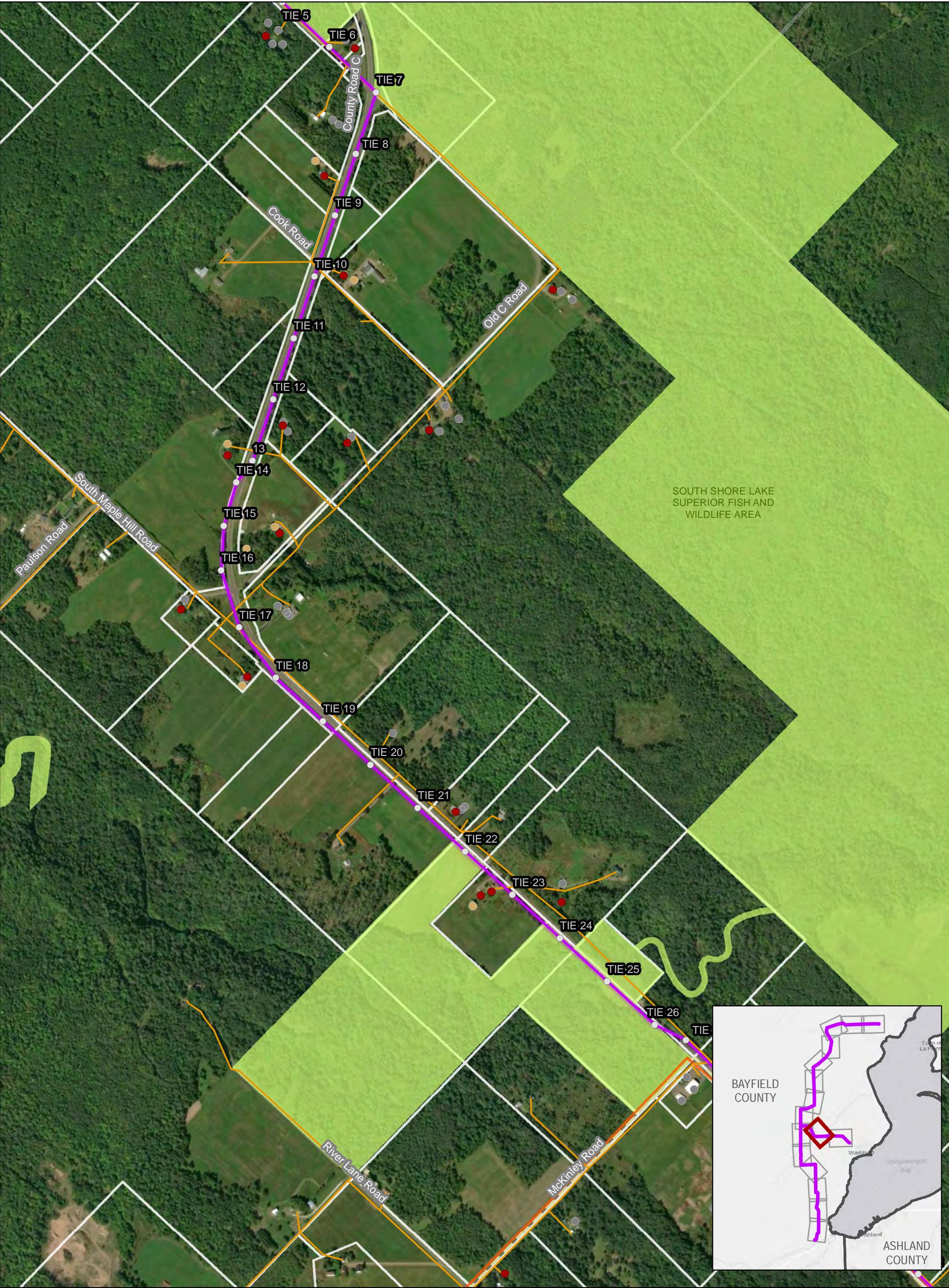
**Figure 4b. PROJECT RELATED DATA
WEST ROUTE**

BAYFIELD SECOND CIRCUIT TRANSMISSION LINE PROJECT



This information is believed to be correct, but is subject to change and carries no warranty. It is intended for reference purposes only. Applicant owned and operated facility locations are approximate. Data courtesy of Xcel Energy, Bayfield County, ESRI, WDNR, Merjent, NPMS, DPC, WhiteStar and ATC.

- | | | |
|-----------------------|-----------------------------|-------------------------------------|
| ▲ Segment Nodes | ● House | West Route Corridor |
| West Route | ● Agricultural Bldg. | Substation Footprint |
| Bypass Lines | ● Other Bldg. | Protected Lands (USFS, USFWS, WDNR) |
| Pipeline | ● Confined Dairy Operations | Bayfield County Forest |
| Existing Distribution | ● Washburn Switch | Section |
| | ● Potential Laydown Yards | Township |
| | ● Xcel Energy Substation | Parcel Boundary |
| | ● DPC Substation | |



**Figure 4b. PROJECT RELATED DATA
WEST ROUTE**

BAYFIELD SECOND CIRCUIT TRANSMISSION LINE PROJECT



This information is believed to be correct, but is subject to change and carries no warranty. It is intended for reference purposes only. Applicant owned and operated facility locations are approximate. Data courtesy of Xcel Energy, Bayfield County, ESRI, WDNR, Merjent, NPMS, DPC, WhiteStar and ATC.

- | | | |
|-------------------------|-----------------------------|---------------------------------------|
| ▲ Segment Nodes | ● House | ■ West Route Corridor |
| ~ West Route | ● Agricultural Bldg. | □ Substation Footprint |
| ~ Bypass Lines | ● Other Bldg. | ■ Protected Lands (USFS, USFWS, WDNR) |
| ~ Pipeline | ● Confined Dairy Operations | ■ Bayfield County Forest |
| ~ Existing Distribution | ● Washburn Switch | ~ Section |
| | ● Potential Laydown Yards | □ Township |
| | ● Xcel Energy Substation | □ Parcel Boundary |
| | ● DPC Substation | |

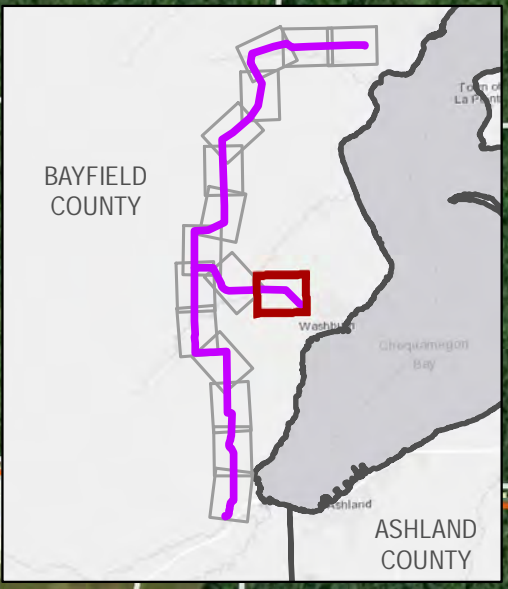
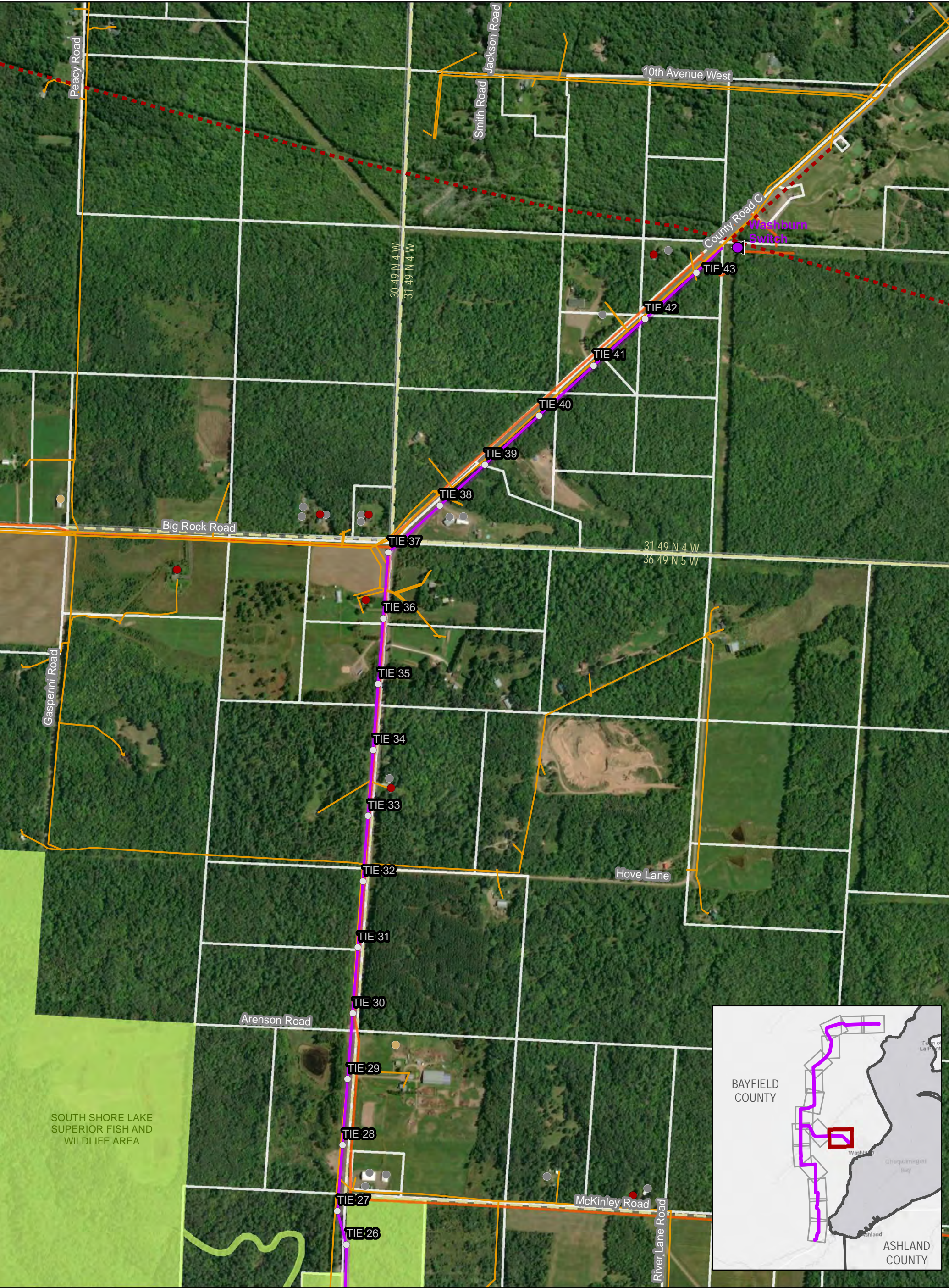


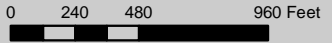
Figure 4b. PROJECT RELATED DATA
WEST ROUTE

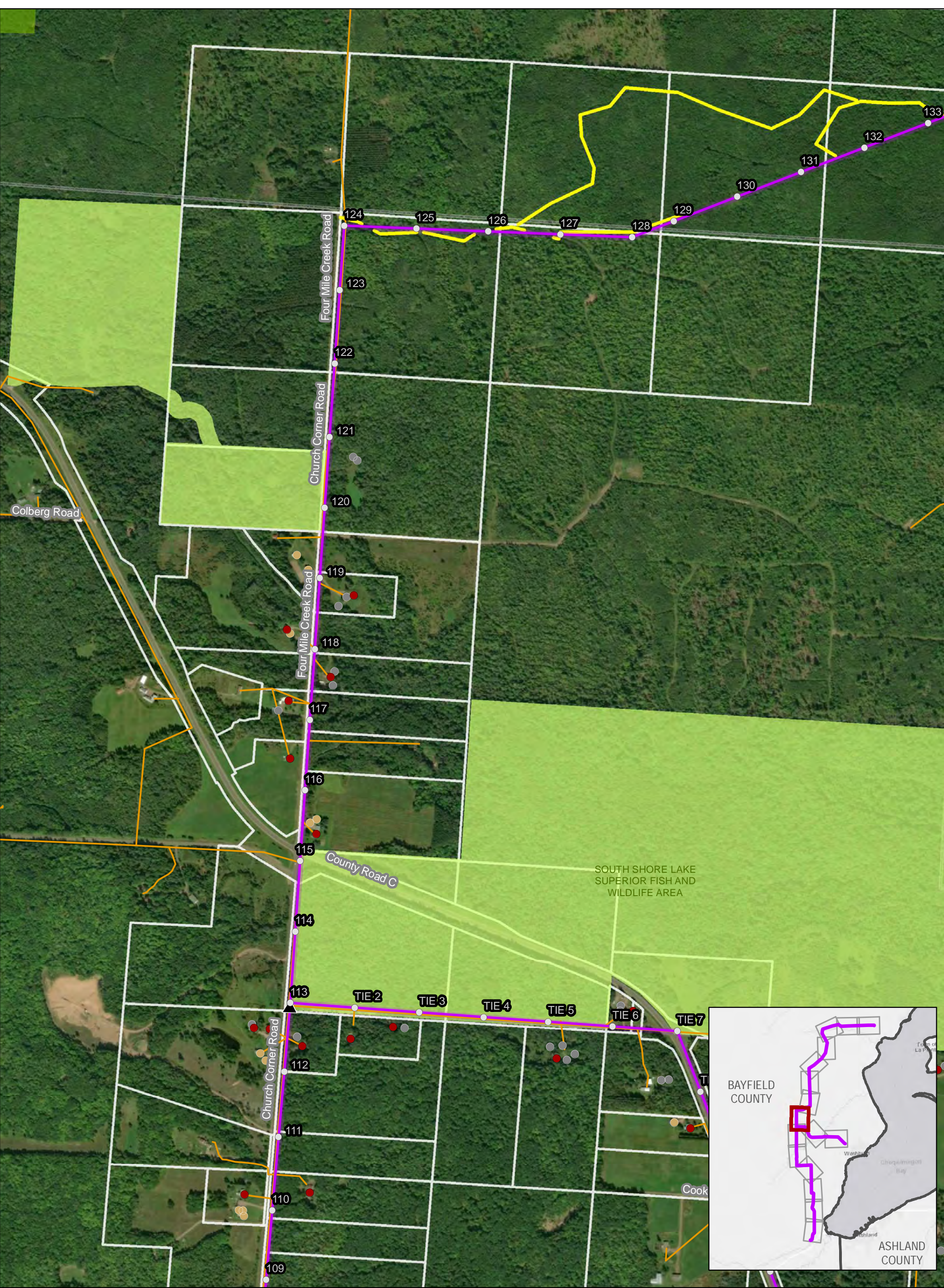
BAYFIELD SECOND CIRCUIT TRANSMISSION LINE PROJECT



This information is believed to be correct, but is subject to change and carries no warranty. It is intended for reference purposes only. Applicant owned and operated facility locations are approximate. Data courtesy of Xcel Energy, Bayfield County, ESRI, WDNR, Merjent, NPMS, DPC, WhiteStar and ATC.

| | | |
|-------------------------|-----------------------------|---------------------------------------|
| ▲ Segment Nodes | ● House | ■ West Route Corridor |
| ~ West Route | ● Agricultural Bldg. | □ Substation Footprint |
| ~ Bypass Lines | ● Other Bldg. | ■ Protected Lands (USFS, USFWS, WDNR) |
| ~ Pipeline | ● Confined Dairy Operations | ■ Bayfield County Forest |
| ~ Existing Distribution | ● Washburn Switch | ~ Section |
| | ● Potential Laydown Yards | ~ Township |
| | ● Xcel Energy Substation | □ Parcel Boundary |
| | ● DPC Substation | |





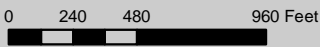
**Figure 4b. PROJECT RELATED DATA
WEST ROUTE**

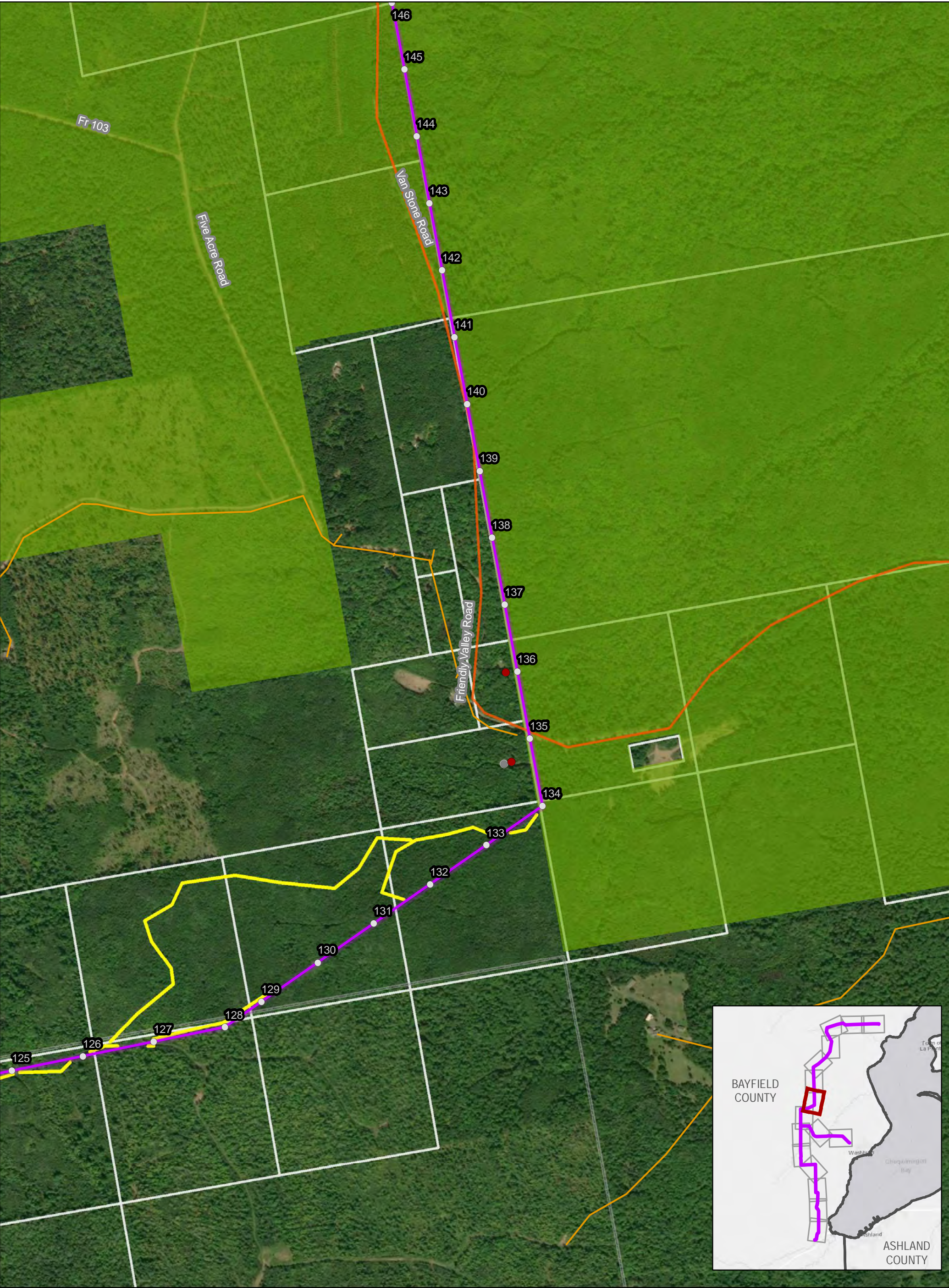
BAYFIELD SECOND CIRCUIT TRANSMISSION LINE PROJECT



This information is believed to be correct, but is subject to change and carries no warranty. It is intended for reference purposes only. Applicant owned and operated facility locations are approximate. Data courtesy of Xcel Energy, Bayfield County, ESRI, WDNR, Merjent, NPMS, DPC, WhiteStar and ATC.

- | | | |
|-----------------------|-----------------------------|-------------------------------------|
| ▲ Segment Nodes | ● House | West Route Corridor |
| West Route | ● Agricultural Bldg. | Substation Footprint |
| Bypass Lines | ● Other Bldg. | Protected Lands (USFS, USFWS, WDNR) |
| Pipeline | ● Confined Dairy Operations | Bayfield County Forest |
| Existing Distribution | ● Washburn Switch | Section |
| | ● Potential Laydown Yards | Township |
| | ● Xcel Energy Substation | Parcel Boundary |
| | ● DPC Substation | |





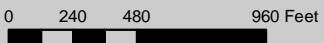
**Figure 4b. PROJECT RELATED DATA
WEST ROUTE**

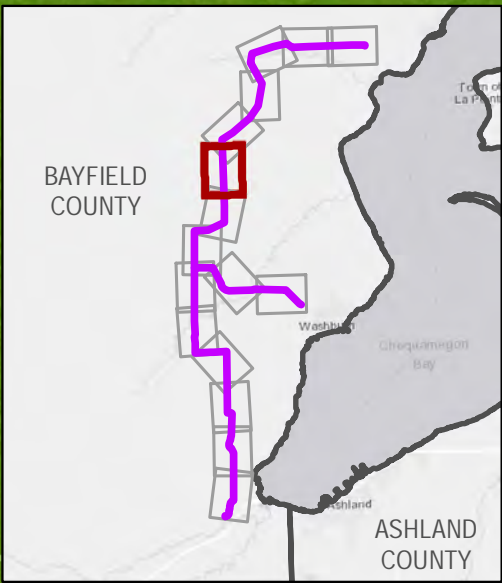
BAYFIELD SECOND CIRCUIT TRANSMISSION LINE PROJECT



This information is believed to be correct, but is subject to change and carries no warranty. It is intended for reference purposes only. Applicant owned and operated facility locations are approximate. Data courtesy of Xcel Energy, Bayfield County, ESRI, WDNR, Merjent, NPMS, DPC, WhiteStar and ATC.

| | | |
|-------------------------|-----------------------------|---------------------------------------|
| ▲ Segment Nodes | ● House | ■ West Route Corridor |
| ~ West Route | ● Agricultural Bldg. | ■ Substation Footprint |
| ~ Bypass Lines | ● Other Bldg. | ■ Protected Lands (USFS, USFWS, WDNR) |
| ~ Pipeline | ● Confined Dairy Operations | ■ Bayfield County Forest |
| ~ Existing Distribution | ● Washburn Switch | ■ Section |
| | ● Potential Laydown Yards | ■ Township |
| | ● Xcel Energy Substation | ■ Parcel Boundary |
| | ● DPC Substation | |





**Figure 4b. PROJECT RELATED DATA
WEST ROUTE**

BAYFIELD SECOND CIRCUIT TRANSMISSION LINE PROJECT



This information is believed to be correct, but is subject to change and carries no warranty. It is intended for reference purposes only. Applicant owned and operated facility locations are approximate. Data courtesy of Xcel Energy, Bayfield County, ESRI, WDNR, Merjent, NPMS, DPC, WhiteStar and ATC.

| | | |
|-----------------------|-----------------------------|-------------------------------------|
| ▲ Segment Nodes | ● House | West Route Corridor |
| West Route | ● Agricultural Bldg. | Substation Footprint |
| Bypass Lines | ● Other Bldg. | Protected Lands (USFS, USFWS, WDNR) |
| Pipeline | ● Confined Dairy Operations | Bayfield County Forest |
| Existing Distribution | ● Washburn Switch | Section |
| | ● Potential Laydown Yards | Township |
| | ● Xcel Energy Substation | Parcel Boundary |
| | ● DPC Substation | |

0 240 480 960 Feet



**Figure 4b. PROJECT RELATED DATA
WEST ROUTE**

BAYFIELD SECOND CIRCUIT TRANSMISSION LINE PROJECT



This information is believed to be correct, but is subject to change and carries no warranty. It is intended for reference purposes only. Applicant owned and operated facility locations are approximate. Data courtesy of Xcel Energy, Bayfield County, ESRI, WDNR, Merjent, NPMS, DPC, WhiteStar and ATC.

| | | |
|-----------------------|-----------------------------|-------------------------------------|
| ▲ Segment Nodes | ● House | West Route Corridor |
| West Route | ● Agricultural Bldg. | Substation Footprint |
| Bypass Lines | ● Other Bldg. | Protected Lands (USFS, USFWS, WDNR) |
| Pipeline | ● Confined Dairy Operations | Bayfield County Forest |
| Existing Distribution | ● Washburn Switch | Section |
| | ● Potential Laydown Yards | Township |
| | ● Xcel Energy Substation | Parcel Boundary |
| | ● DPC Substation | |

0 240 480 960 Feet



**Figure 4b. PROJECT RELATED DATA
WEST ROUTE**

BAYFIELD SECOND CIRCUIT TRANSMISSION LINE PROJECT



This information is believed to be correct, but is subject to change and carries no warranty. It is intended for reference purposes only. Applicant owned and operated facility locations are approximate. Data courtesy of Xcel Energy, Bayfield County, ESRI, WDNR, Merjent, NPMS, DPC, WhiteStar and ATC.

| | | |
|-----------------------|-----------------------------|-------------------------------------|
| ▲ Segment Nodes | ● House | West Route Corridor |
| West Route | ● Agricultural Bldg. | Substation Footprint |
| Bypass Lines | ● Other Bldg. | Protected Lands (USFS, USFWS, WDNR) |
| Pipeline | ● Confined Dairy Operations | Bayfield County Forest |
| Existing Distribution | ● Washburn Switch | Section |
| | ● Potential Laydown Yards | Township |
| | ● Xcel Energy Substation | Parcel Boundary |
| | ● DPC Substation | |



**Figure 4b. PROJECT RELATED DATA
WEST ROUTE**

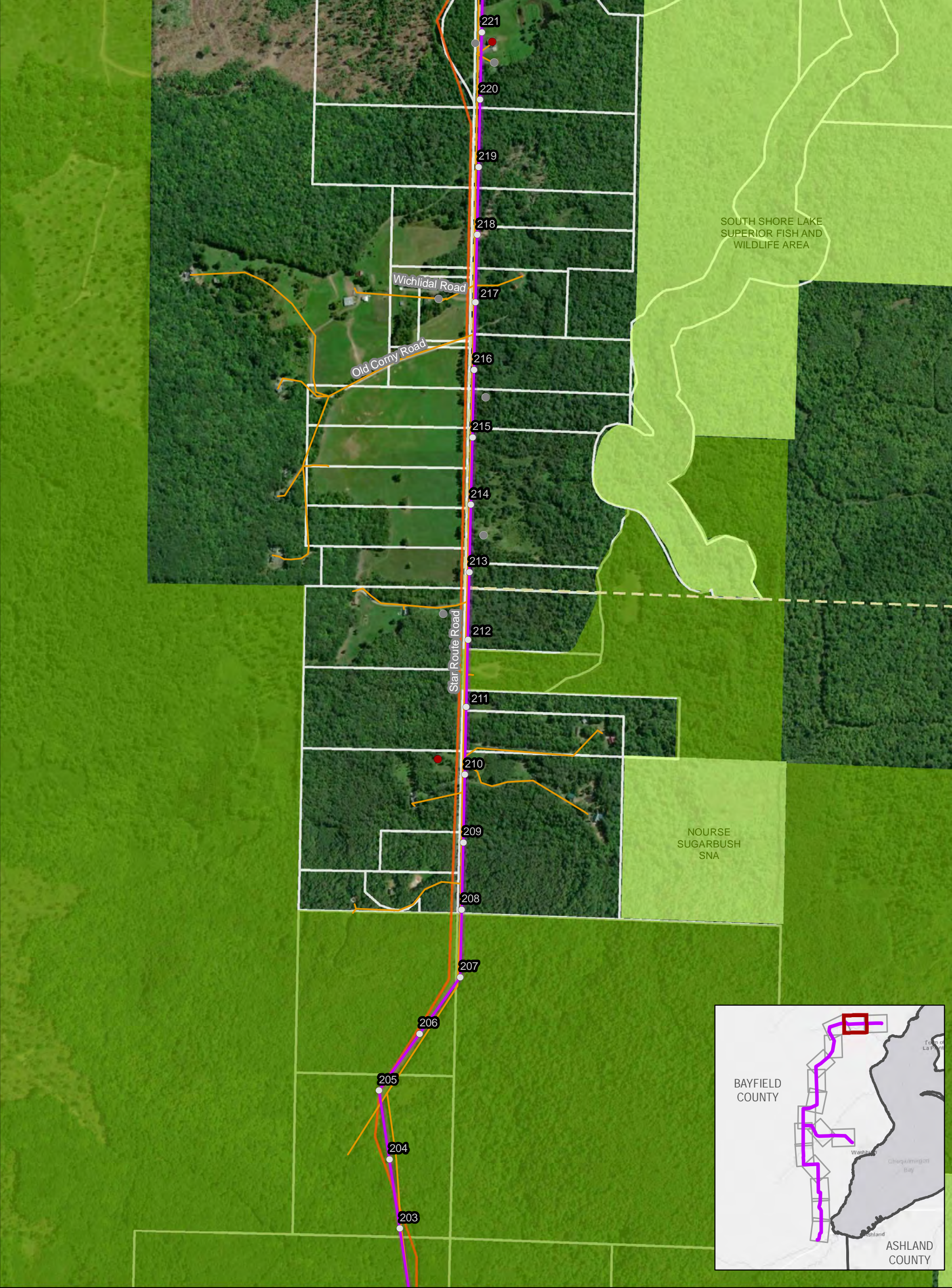
BAYFIELD SECOND CIRCUIT TRANSMISSION LINE PROJECT



This information is believed to be correct, but is subject to change and carries no warranty. It is intended for reference purposes only. Applicant owned and operated facility locations are approximate. Data courtesy of Xcel Energy, Bayfield County, ESRI, WDNR, Merjent, NPMS, DPC, WhiteStar and ATC.

| | | |
|-----------------------|-----------------------------|-------------------------------------|
| ▲ Segment Nodes | ● House | West Route Corridor |
| West Route | ● Agricultural Bldg. | Substation Footprint |
| Bypass Lines | ● Other Bldg. | Protected Lands (USFS, USFWS, WDNR) |
| Pipeline | ● Confined Dairy Operations | Bayfield County Forest |
| Existing Distribution | ● Washburn Switch | Section |
| | ● Potential Laydown Yards | Township |
| | ● Xcel Energy Substation | Parcel Boundary |
| | ● DPC Substation | |

0 240 480 960 Feet



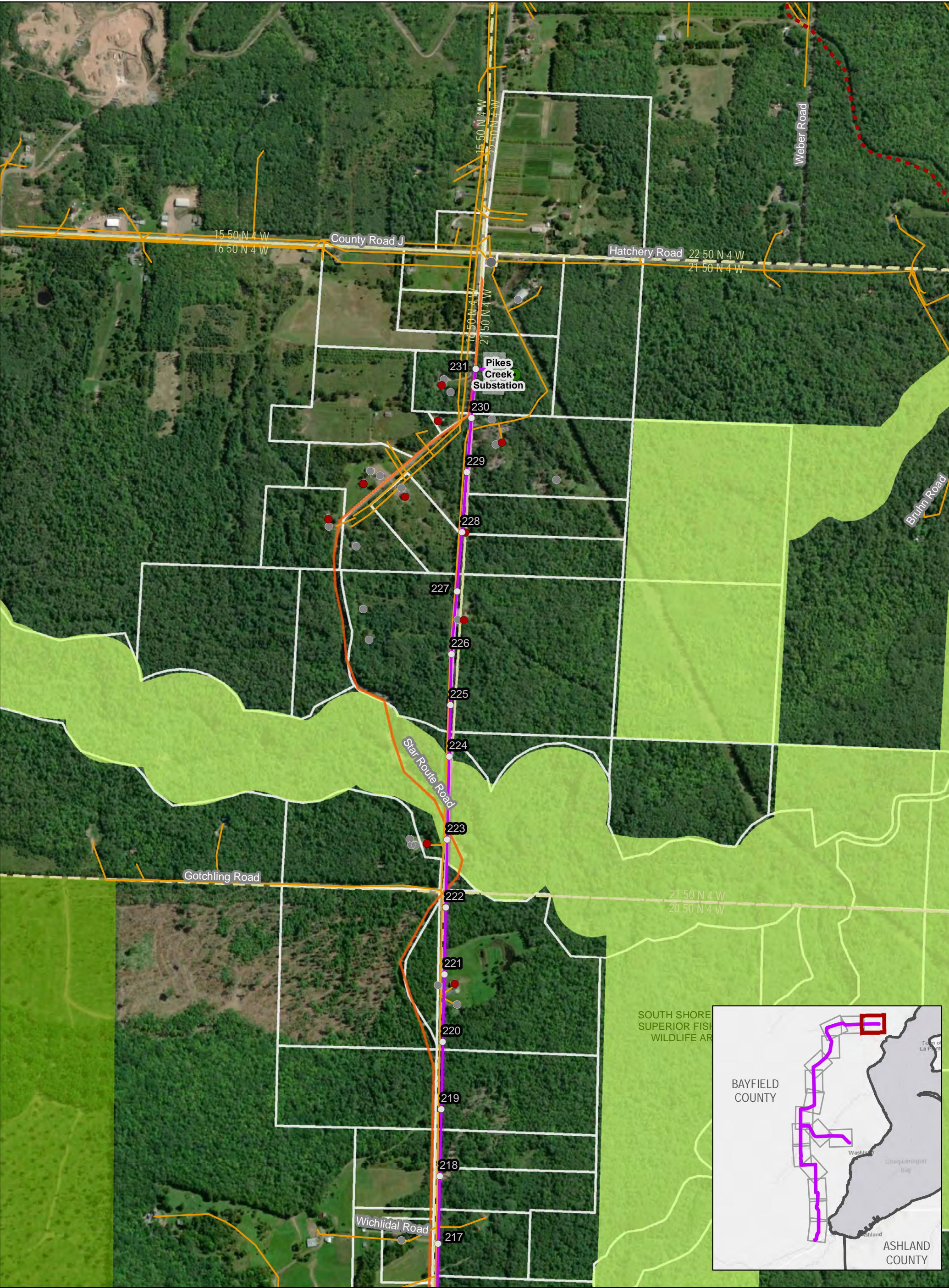
**Figure 4b. PROJECT RELATED DATA
WEST ROUTE**

BAYFIELD SECOND CIRCUIT TRANSMISSION LINE PROJECT



This information is believed to be correct, but is subject to change and carries no warranty.
It is intended for reference purposes only. Applicant owned and operated facility locations are approximate.
Data courtesy of Xcel Energy, Bayfield County, ESRI, WDNR, Merjent, NPMS, DPC, WhiteStar and ATC.

- | | | |
|-------------------------|-----------------------------|---------------------------------------|
| ▲ Segment Nodes | ● House | ■ West Route Corridor |
| ~ West Route | ● Agricultural Bldg. | ■ Substation Footprint |
| ~ Bypass Lines | ● Other Bldg. | ■ Protected Lands (USFS, USFWS, WDNR) |
| ~ Pipeline | ● Confined Dairy Operations | ■ Bayfield County Forest |
| ~ Existing Distribution | ● Washburn Switch | ■ Section |
| | ● Potential Laydown Yards | ■ Township |
| | ● Xcel Energy Substation | ■ Parcel Boundary |
| | ● DPC Substation | |



**Figure 4b. PROJECT RELATED DATA
WEST ROUTE**

BAYFIELD SECOND CIRCUIT TRANSMISSION LINE PROJECT



This information is believed to be correct, but is subject to change and carries no warranty. It is intended for reference purposes only. Applicant owned and operated facility locations are approximate. Data courtesy of Xcel Energy, Bayfield County, ESRI, WDNR, Merjent, NPMS, DPC, WhiteStar and ATC.

| | | |
|-----------------------|-----------------------------|-------------------------------------|
| ▲ Segment Nodes | ● House | West Route Corridor |
| West Route | ● Agricultural Bldg. | Substation Footprint |
| Bypass Lines | ● Other Bldg. | Protected Lands (USFS, USFWS, WDNR) |
| Pipeline | ● Confined Dairy Operations | Bayfield County Forest |
| Existing Distribution | ● Washburn Switch | Section |
| | ● Potential Laydown Yards | Township |
| | ● Xcel Energy Substation | Parcel Boundary |
| | ● DPC Substation | |

