

**Figure 5a. ENVIRONMENTAL DATA
EAST ROUTE**

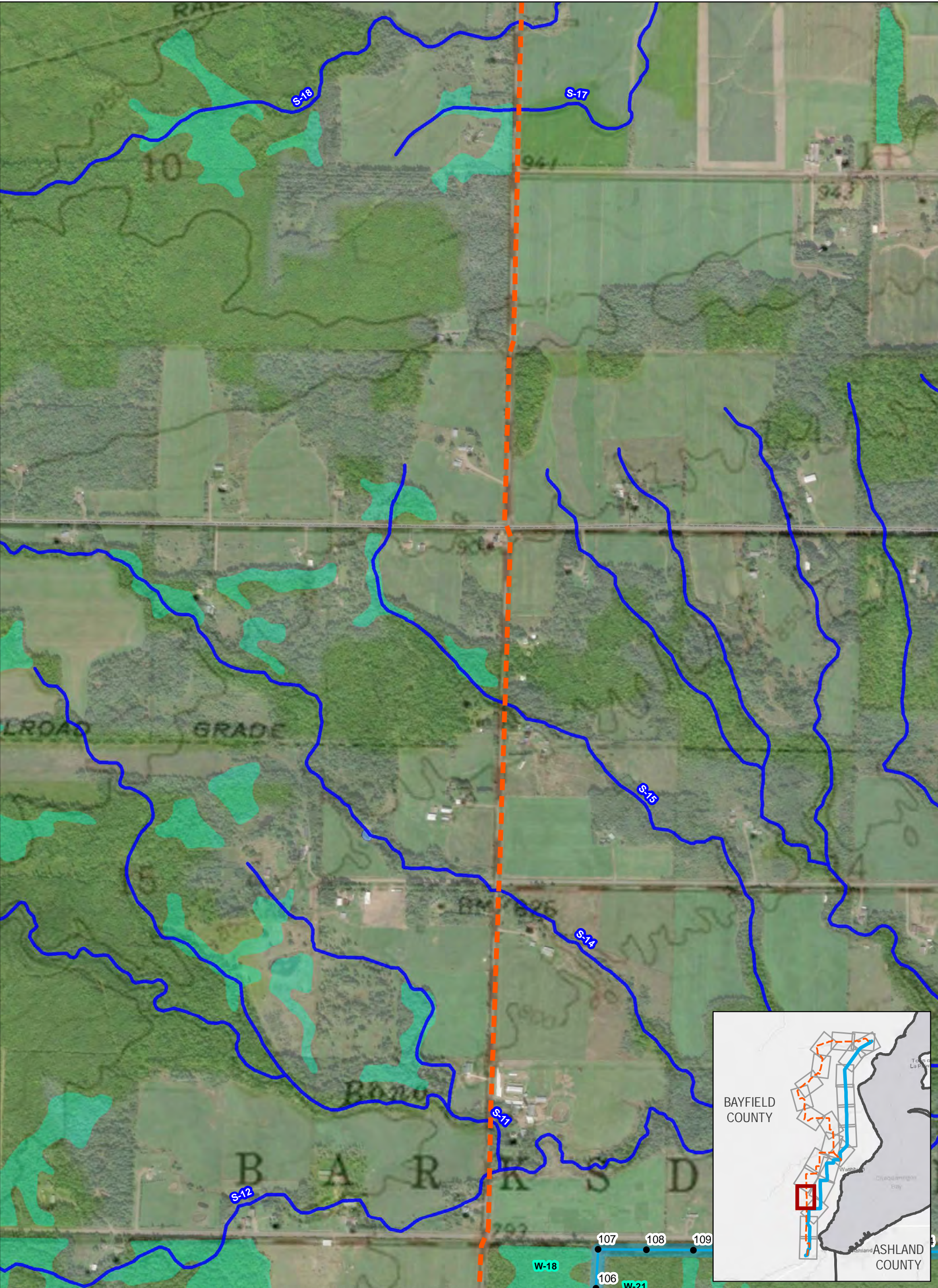
BAYFIELD SECOND CIRCUIT TRANSMISSION LINE PROJECT



This information is believed to be correct, but is subject to change and carries no warranty. It is intended for reference purposes only. Applicant owned and operated facility locations are approximate. Data courtesy of Xcel Energy, ESRI, WDNR, Merjent, NPMS and ATC.

- | | | |
|-------------------------------|-----------------------|------------------------|
| ● Proposed Structures | ▨ Hydric Soils | ▭ Substation Footprint |
| ● Washburn Switch | ▬ East Route Corridor | ▭ Township |
| ● Temporary Clear Span Bridge | ▬ Waterbodies | |
| — East Route | ▬ Wetlands (WB-XX) | |
| — Bypass Lines | ▬ 100 Year Floodplain | |
| — Off Right of Way Access | | |
| — Streams (S-XX) | | |





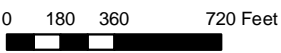
**Figure 5a. ENVIRONMENTAL DATA
EAST ROUTE**

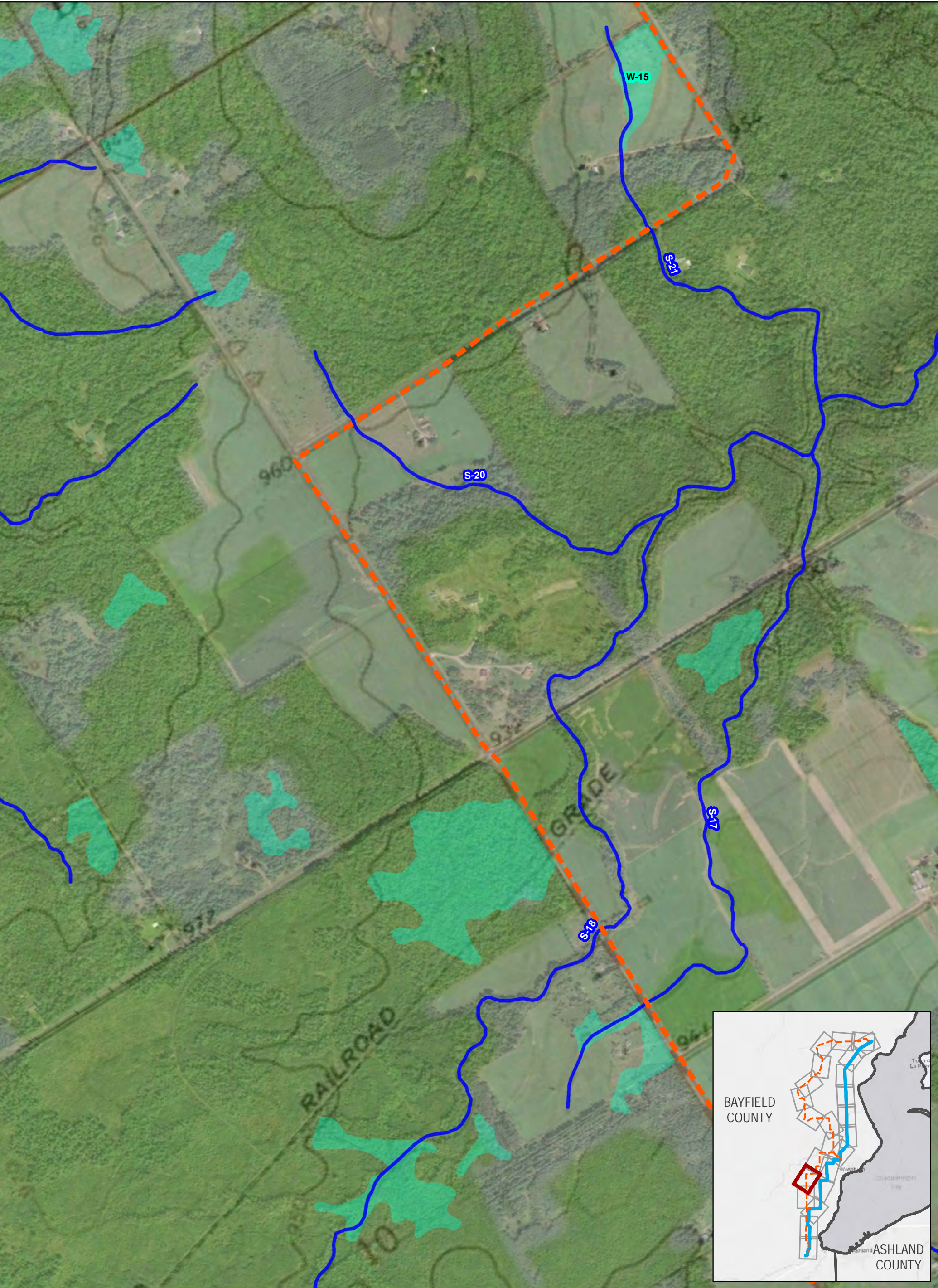
BAYFIELD SECOND CIRCUIT TRANSMISSION LINE PROJECT



This information is believed to be correct, but is subject to change and carries no warranty. It is intended for reference purposes only. Applicant owned and operated facility locations are approximate. Data courtesy of Xcel Energy, ESRI, WDNR, Merjent, NPMS and ATC.

- | | | |
|-------------------------------|-----------------------|------------------------|
| ● Proposed Structures | ▨ Hydric Soils | ■ Substation Footprint |
| ● Washburn Switch | ■ East Route Corridor | ▭ Township |
| ● Temporary Clear Span Bridge | ■ Waterbodies | |
| ~ East Route | ■ Wetlands (WB-XX) | |
| ~ Bypass Lines | ■ 100 Year Floodplain | |
| ~ Off Right of Way Access | | |
| ~ Streams (S-XX) | | |





**Figure 5a. ENVIRONMENTAL DATA
EAST ROUTE**

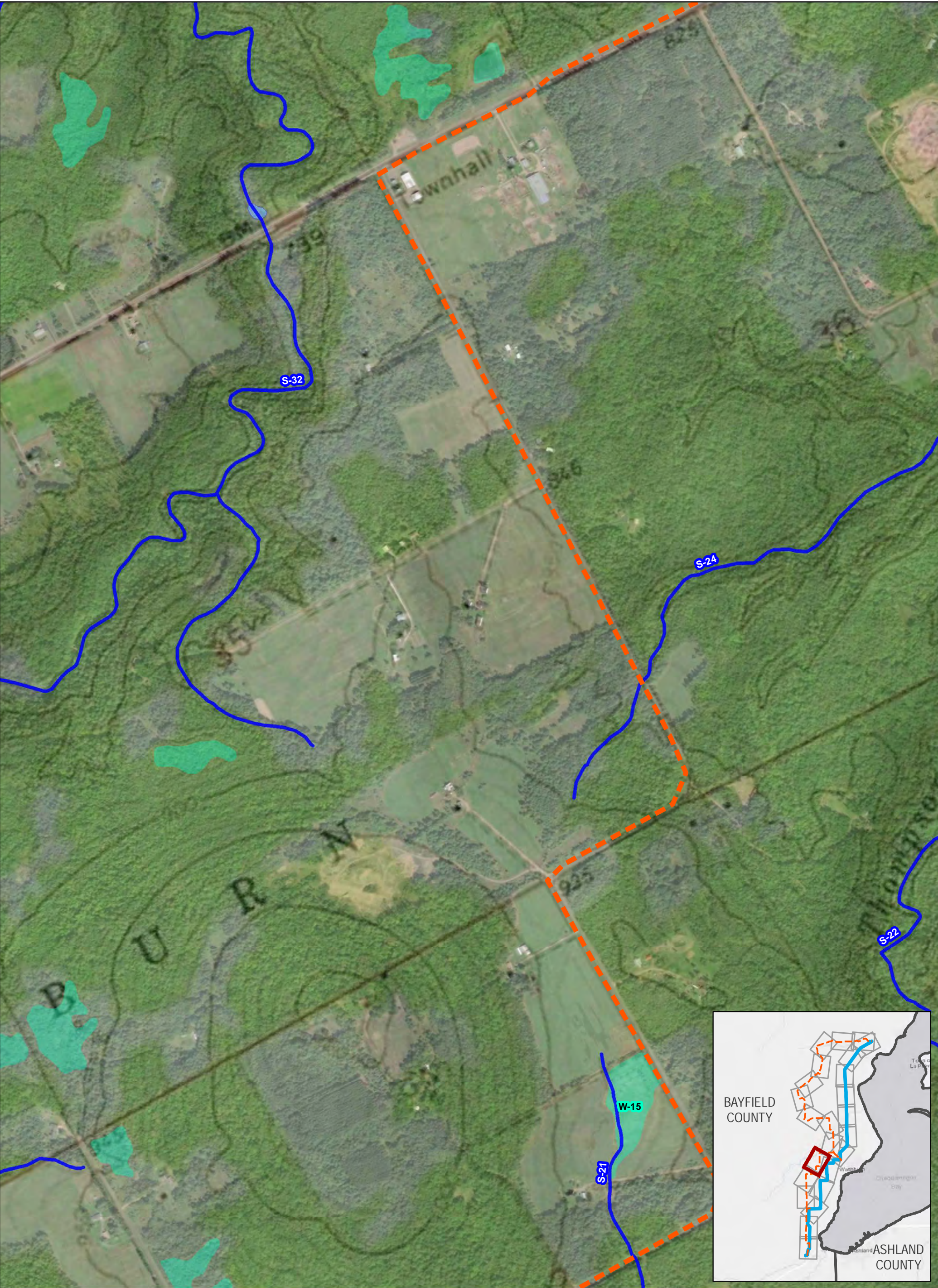
BAYFIELD SECOND CIRCUIT TRANSMISSION LINE PROJECT



This information is believed to be correct, but is subject to change and carries no warranty. It is intended for reference purposes only. Applicant owned and operated facility locations are approximate. Data courtesy of Xcel Energy, ESRI, WDNR, Merjent, NPMS and ATC.

- | | | |
|-------------------------------|-----------------------|------------------------|
| ● Proposed Structures | ▨ Hydric Soils | ■ Substation Footprint |
| ● Washburn Switch | ■ East Route Corridor | ■ Township |
| ● Temporary Clear Span Bridge | ■ Waterbodies | |
| ~ East Route | ■ Wetlands (WB-XX) | |
| ~ Bypass Lines | ■ 100 Year Floodplain | |
| ~ Off Right of Way Access | | |
| ~ Streams (S-XX) | | |





**Figure 5a. ENVIRONMENTAL DATA
EAST ROUTE**

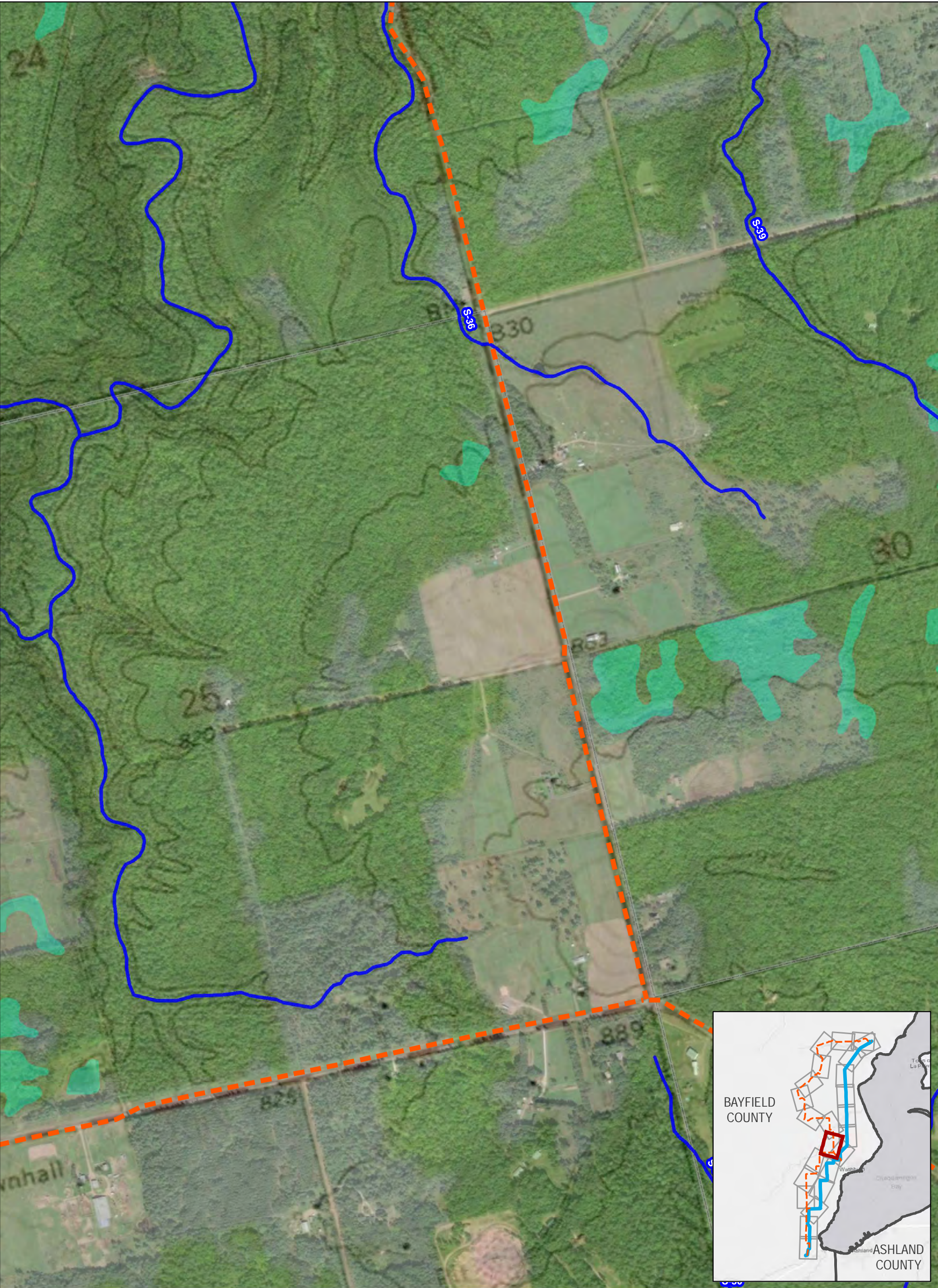
BAYFIELD SECOND CIRCUIT TRANSMISSION LINE PROJECT



This information is believed to be correct, but is subject to change and carries no warranty. It is intended for reference purposes only. Applicant owned and operated facility locations are approximate. Data courtesy of Xcel Energy, ESRI, WDNR, Merjent, NPMS and ATC.

- | | | |
|-------------------------------|---------------------|----------------------|
| ● Proposed Structures | Hydric Soils | Substation Footprint |
| ● Washburn Switch | East Route Corridor | Township |
| ● Temporary Clear Span Bridge | Waterbodies | |
| East Route | Wetlands (WB-XX) | |
| Bypass Lines | 100 Year Floodplain | |
| Off Right of Way Access | | |
| Streams (S-XX) | | |





**Figure 5a. ENVIRONMENTAL DATA
EAST ROUTE**

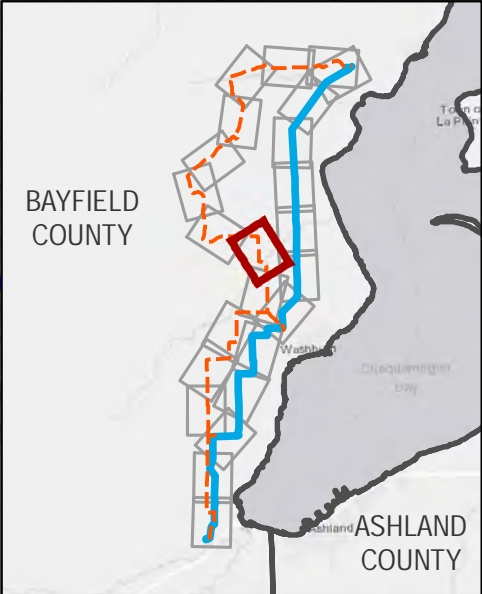
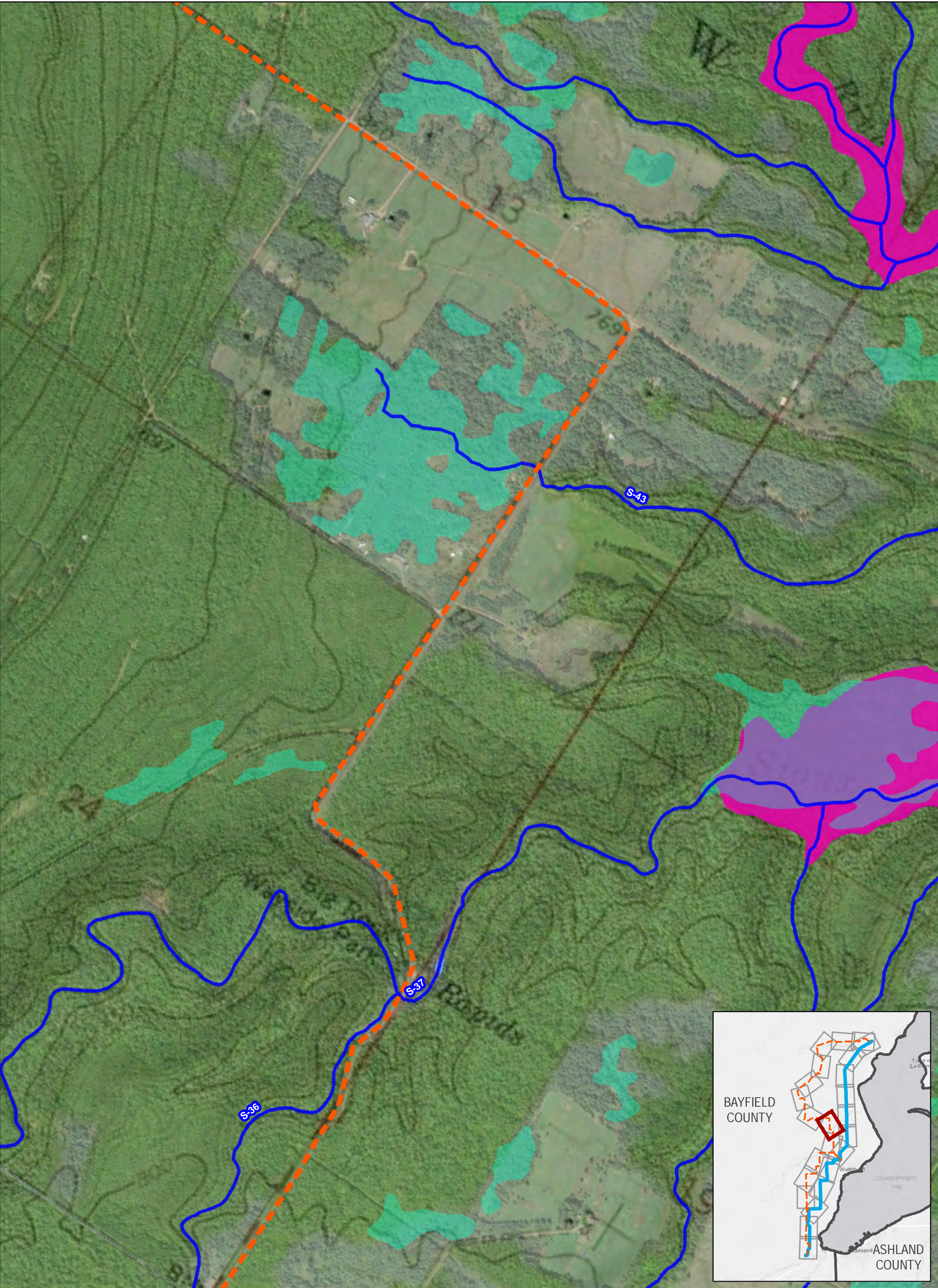
BAYFIELD SECOND CIRCUIT TRANSMISSION LINE PROJECT



This information is believed to be correct, but is subject to change and carries no warranty. It is intended for reference purposes only. Applicant owned and operated facility locations are approximate. Data courtesy of Xcel Energy, ESRI, WDNR, Merjent, NPMS and ATC.

- | | | |
|-------------------------------|-----------------------|------------------------|
| ● Proposed Structures | ▨ Hydric Soils | ■ Substation Footprint |
| ● Washburn Switch | ■ East Route Corridor | ▭ Township |
| ● Temporary Clear Span Bridge | ■ Waterbodies | |
| ~ East Route | ■ Wetlands (WB-XX) | |
| ~ Bypass Lines | ■ 100 Year Floodplain | |
| ~ Off Right of Way Access | | |
| ~ Streams (S-XX) | | |





**Figure 5a. ENVIRONMENTAL DATA
EAST ROUTE**

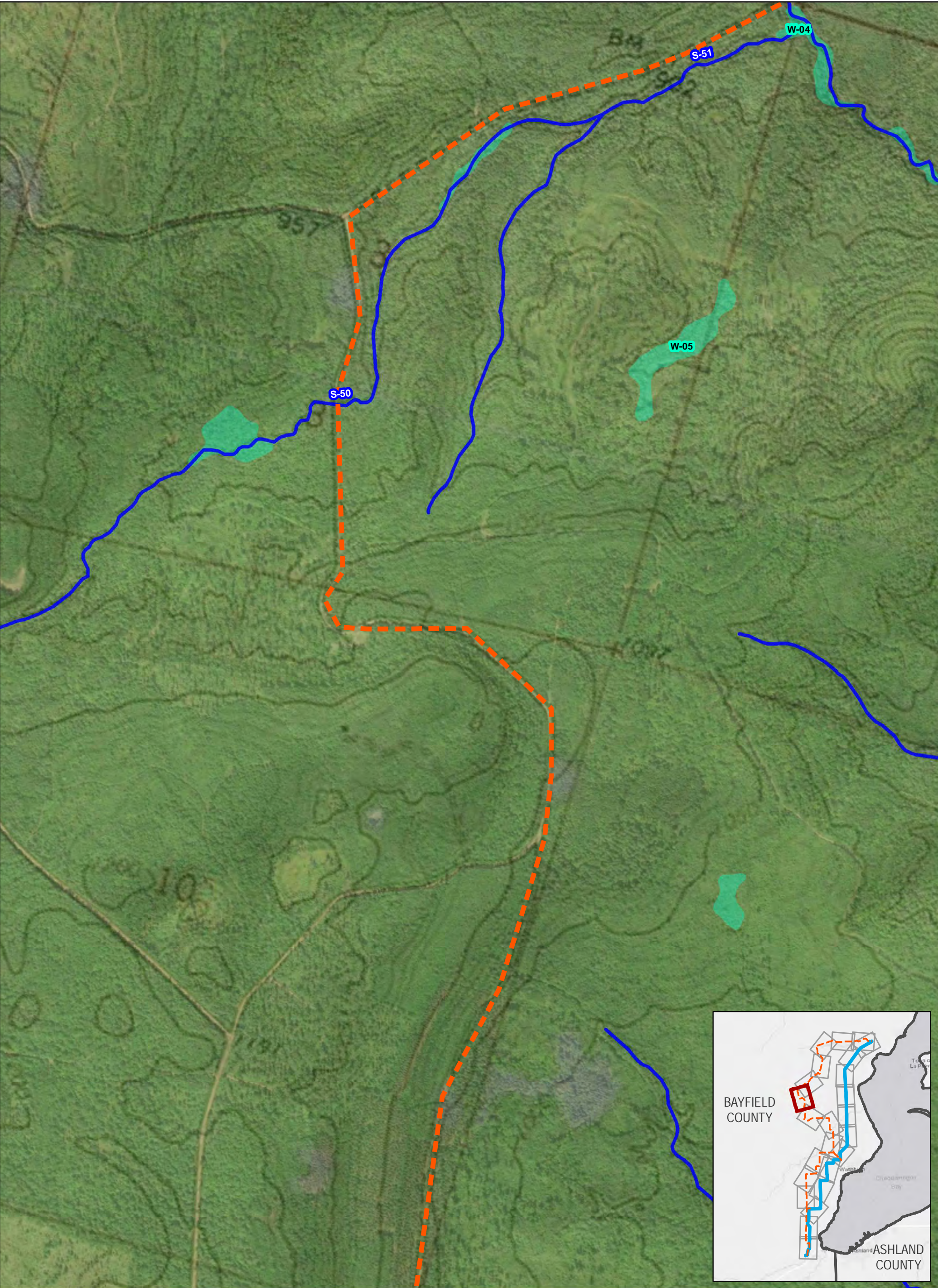
BAYFIELD SECOND CIRCUIT TRANSMISSION LINE PROJECT



This information is believed to be correct, but is subject to change and carries no warranty. It is intended for reference purposes only. Applicant owned and operated facility locations are approximate. Data courtesy of Xcel Energy, ESRI, WDNR, Merjent, NPMS and ATC.

- | | | |
|-------------------------------|---------------------|----------------------|
| ● Proposed Structures | Hydric Soils | Substation Footprint |
| ● Washburn Switch | East Route Corridor | Township |
| ● Temporary Clear Span Bridge | Waterbodies | |
| East Route | Wetlands (WB-XX) | |
| Bypass Lines | 100 Year Floodplain | |
| Off Right of Way Access | | |
| Streams (S-XX) | | |





**Figure 5a. ENVIRONMENTAL DATA
EAST ROUTE**

BAYFIELD SECOND CIRCUIT TRANSMISSION LINE PROJECT



This information is believed to be correct, but is subject to change and carries no warranty. It is intended for reference purposes only. Applicant owned and operated facility locations are approximate. Data courtesy of Xcel Energy, ESRI, WDNR, Merjent, NPMS and ATC.

- | | | |
|-------------------------------|-----------------------|------------------------|
| ● Proposed Structures | ▨ Hydric Soils | ■ Substation Footprint |
| ● Washburn Switch | ■ East Route Corridor | ▭ Township |
| ● Temporary Clear Span Bridge | ■ Waterbodies | |
| ~ East Route | ■ Wetlands (WB-XX) | |
| ~ Bypass Lines | ■ 100 Year Floodplain | |
| ~ Off Right of Way Access | | |
| ~ Streams (S-XX) | | |





**Figure 5a. ENVIRONMENTAL DATA
EAST ROUTE**

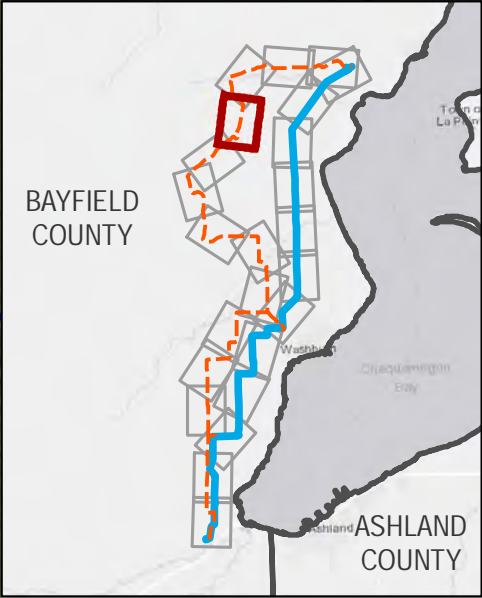
BAYFIELD SECOND CIRCUIT TRANSMISSION LINE PROJECT



This information is believed to be correct, but is subject to change and carries no warranty. It is intended for reference purposes only. Applicant owned and operated facility locations are approximate. Data courtesy of Xcel Energy, ESRI, WDNR, Merjent, NPMS and ATC.

- | | | |
|-------------------------------|-----------------------|------------------------|
| ● Proposed Structures | ▨ Hydric Soils | ■ Substation Footprint |
| ● Washburn Switch | ■ East Route Corridor | ▭ Township |
| ● Temporary Clear Span Bridge | ■ Waterbodies | |
| ~ East Route | ■ Wetlands (WB-XX) | |
| ~ Bypass Lines | ■ 100 Year Floodplain | |
| ~ Off Right of Way Access | | |
| ~ Streams (S-XX) | | |





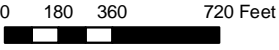
**Figure 5a. ENVIRONMENTAL DATA
EAST ROUTE**

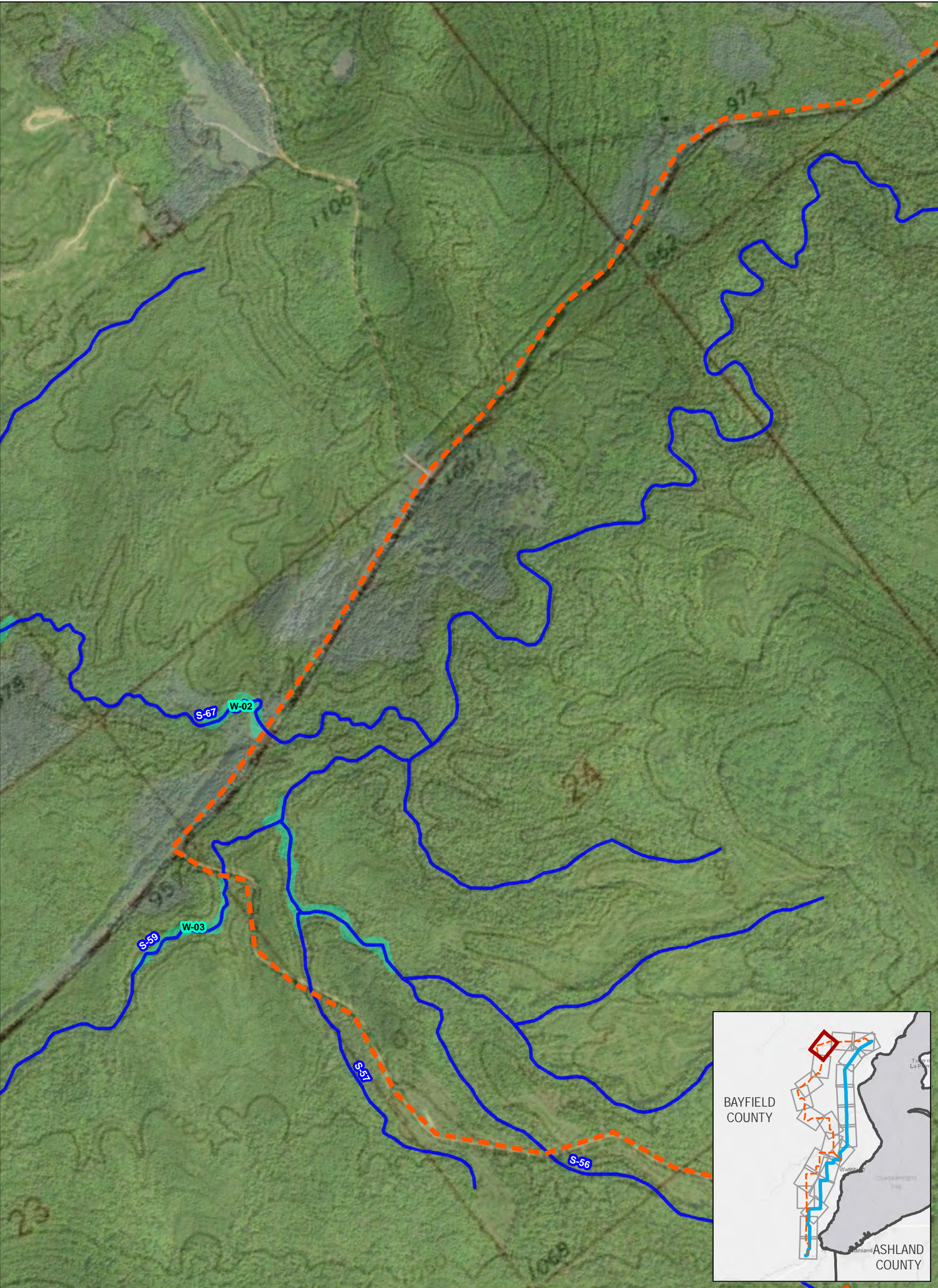
BAYFIELD SECOND CIRCUIT TRANSMISSION LINE PROJECT



This information is believed to be correct, but is subject to change and carries no warranty.
It is intended for reference purposes only. Applicant owned and operated facility locations are approximate.
Data courtesy of Xcel Energy, ESRI, WDNR, Merjent, NPMS and ATC.

- | | | |
|-------------------------------|---------------------|----------------------|
| ● Proposed Structures | Hydric Soils | Substation Footprint |
| ● Washburn Switch | East Route Corridor | Township |
| ● Temporary Clear Span Bridge | Waterbodies | |
| East Route | Wetlands (WB-XX) | |
| Bypass Lines | 100 Year Floodplain | |
| Off Right of Way Access | | |
| Streams (S-XX) | | |





**Figure 5a. ENVIRONMENTAL DATA
EAST ROUTE**

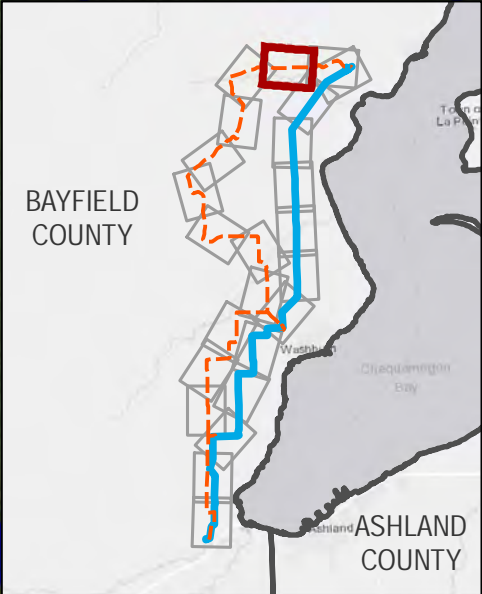
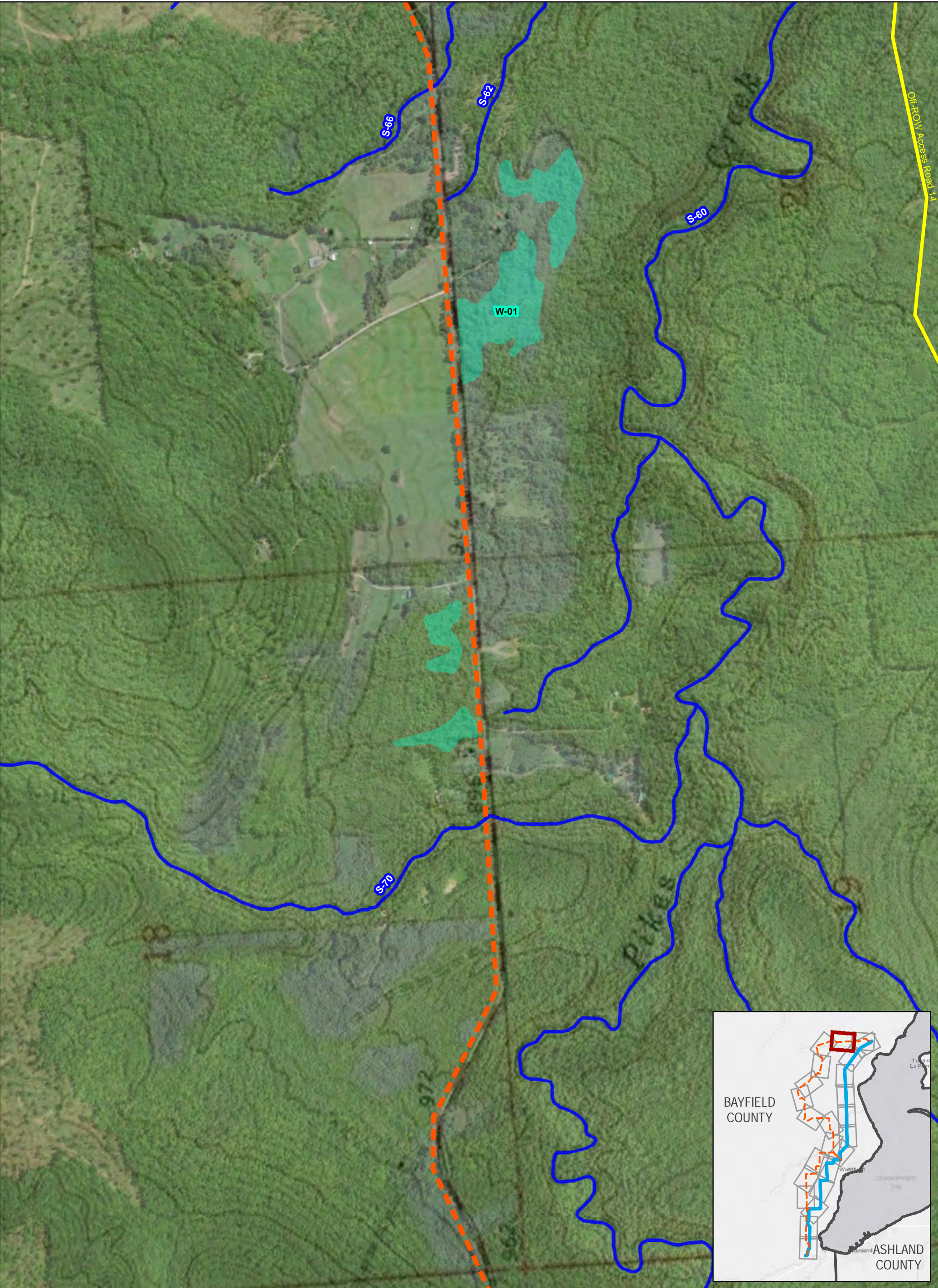
BAYFIELD SECOND CIRCUIT TRANSMISSION LINE PROJECT



This information is believed to be correct, but is subject to change and carries no warranty. It is intended for reference purposes only. Applicant owned and operated facility locations are approximate. Data courtesy of Xcel Energy, ESRI, WDNR, Merjent, NPMS and ATC.

- | | | |
|-------------------------------|-----------------------|------------------------|
| ● Proposed Structures | ▨ Hydric Soils | ■ Substation Footprint |
| ● Washburn Switch | ■ East Route Corridor | ▭ Township |
| ● Temporary Clear Span Bridge | ■ Waterbodies | |
| ~ East Route | ■ Wetlands (WB-XX) | |
| ~ Bypass Lines | ■ 100 Year Floodplain | |
| ~ Off Right of Way Access | | |
| ~ Streams (S-XX) | | |





**Figure 5a. ENVIRONMENTAL DATA
EAST ROUTE**

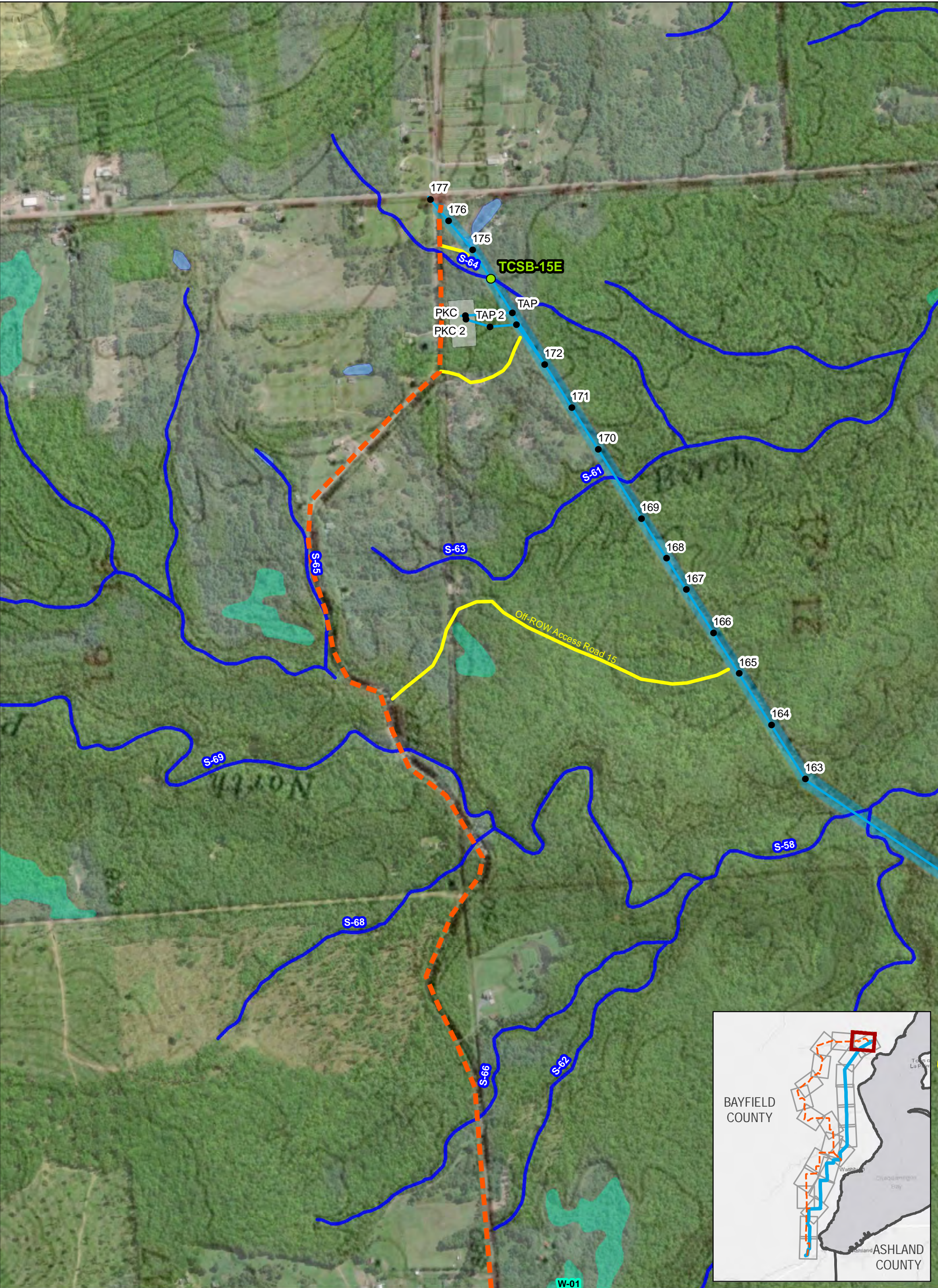
BAYFIELD SECOND CIRCUIT TRANSMISSION LINE PROJECT



This information is believed to be correct, but is subject to change and carries no warranty. It is intended for reference purposes only. Applicant owned and operated facility locations are approximate. Data courtesy of Xcel Energy, ESRI, WDNR, Merjent, NPMS and ATC.

- | | | |
|-------------------------------|-----------------------|------------------------|
| ● Proposed Structures | ▨ Hydric Soils | ■ Substation Footprint |
| ● Washburn Switch | ■ East Route Corridor | ▭ Township |
| ● Temporary Clear Span Bridge | ■ Waterbodies | |
| ~ East Route | ■ Wetlands (WB-XX) | |
| ~ Bypass Lines | ■ 100 Year Floodplain | |
| ~ Off Right of Way Access | | |
| ~ Streams (S-XX) | | |





**Figure 5a. ENVIRONMENTAL DATA
EAST ROUTE**

BAYFIELD SECOND CIRCUIT TRANSMISSION LINE PROJECT



This information is believed to be correct, but is subject to change and carries no warranty. It is intended for reference purposes only. Applicant owned and operated facility locations are approximate. Data courtesy of Xcel Energy, ESRI, WDNR, Merjent, NPMS and ATC.

- | | | |
|-------------------------------|-----------------------|------------------------|
| ● Proposed Structures | ▨ Hydric Soils | ■ Substation Footprint |
| ● Washburn Switch | ■ East Route Corridor | ■ Township |
| ● Temporary Clear Span Bridge | ■ Waterbodies | |
| — East Route | ■ Wetlands (WB-XX) | |
| — Bypass Lines | ■ 100 Year Floodplain | |
| — Off Right of Way Access | | |
| — Streams (S-XX) | | |

