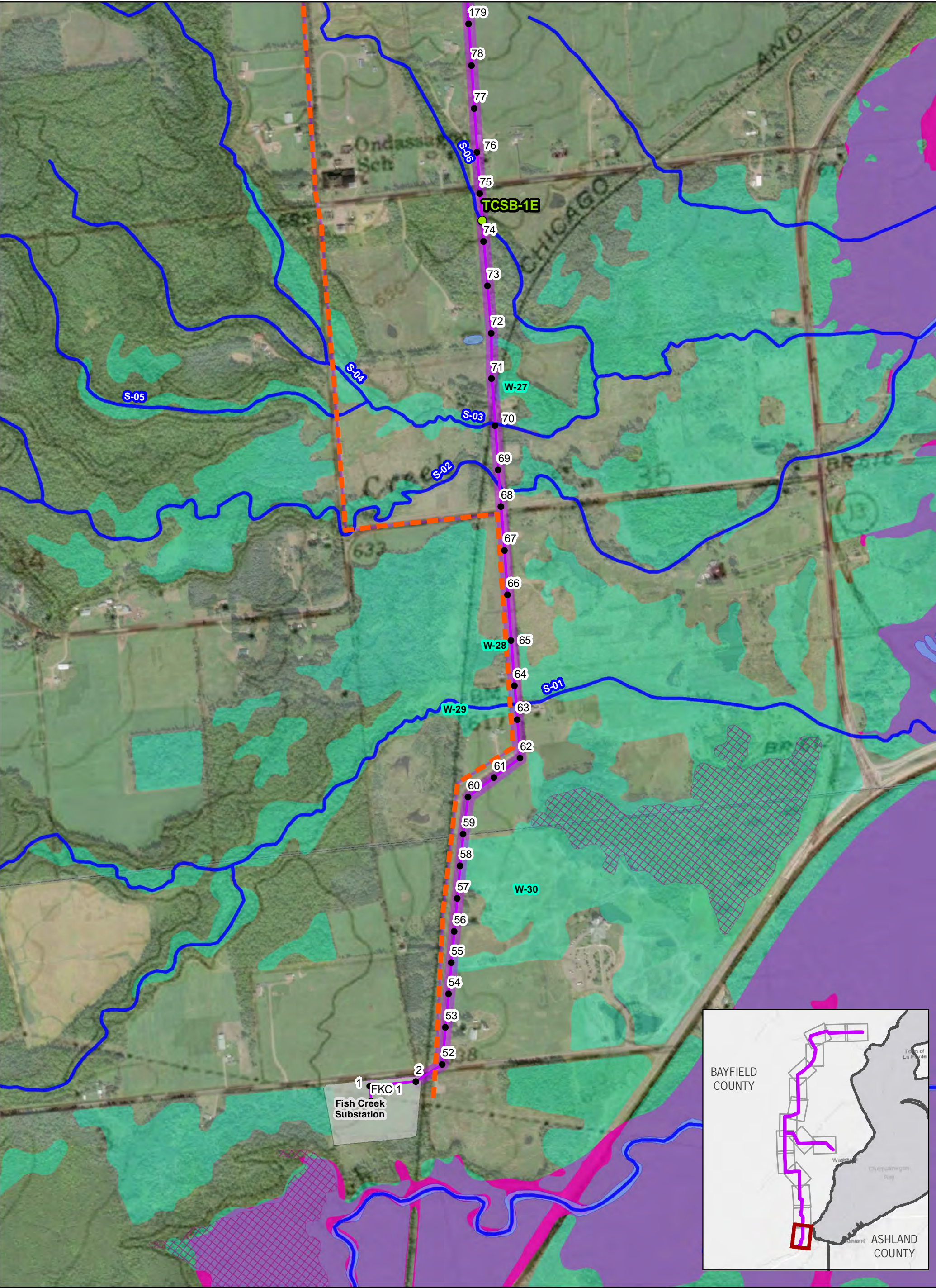


Figure 5B
Environmental Data
West Route



**Figure 5b. ENVIRONMENTAL DATA
WEST ROUTE**

BAYFIELD SECOND CIRCUIT TRANSMISSION LINE PROJECT



- Proposed Structure
- Washburn Switch
- Temporary Clear Span Bridge
- ~ West Route
- Bypass Lines
- ~ Off Right of Way Access
- ~ Streams (S-XX)

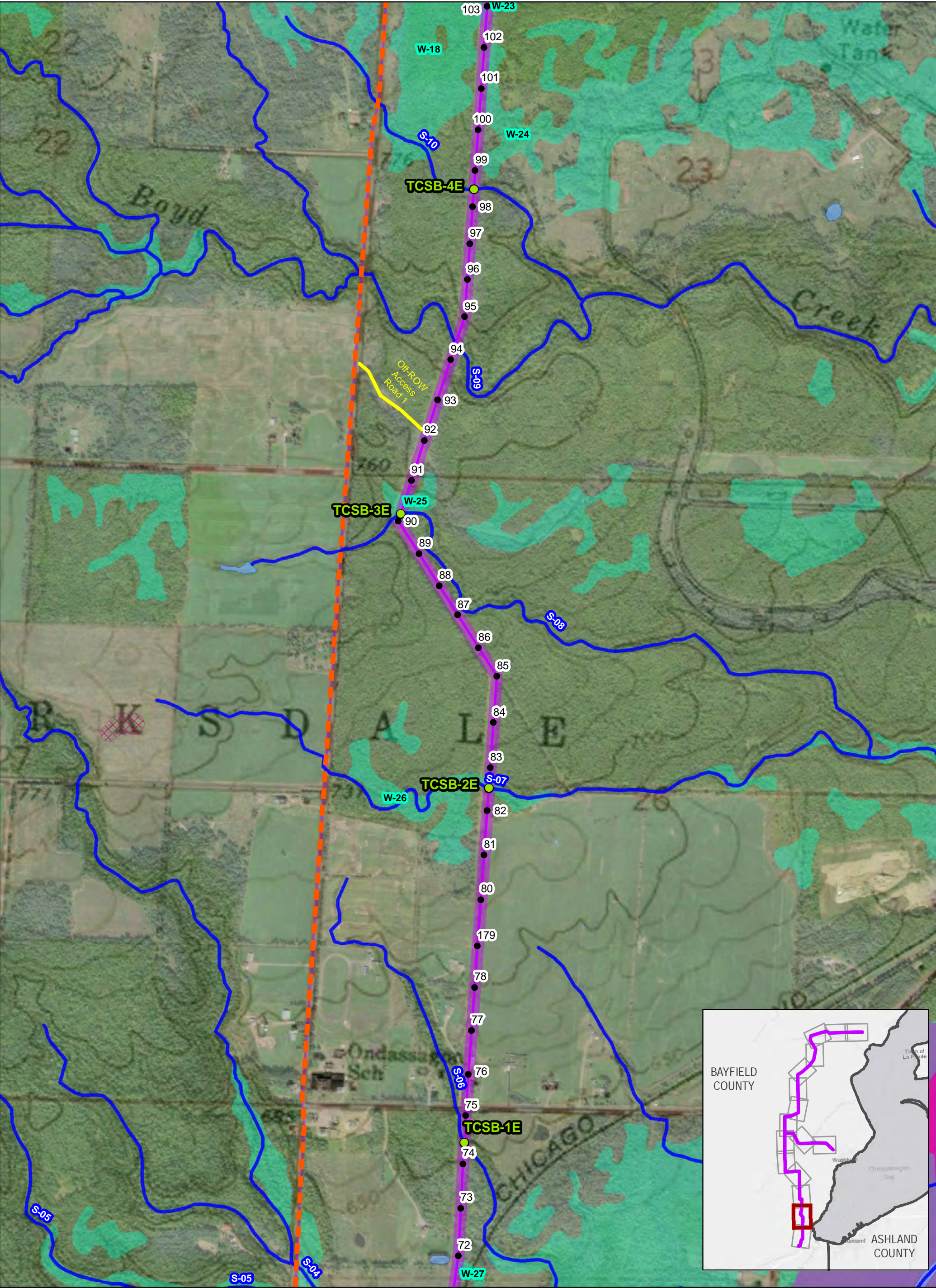
- ▨ Hydric Soils
- ▨ West Route Corridor
- ▨ Waterbodies
- ▨ Wetlands (WB-XX)
- ▨ 100 Year Floodplain

- ▨ Substation Footprint
- ▨ Township

03306601,320 Feet

N

This information is believed to be correct, but is subject to change and carries no warranty. It is intended for reference purposes only. Applicant owned and operated facility locations are approximate. Data courtesy of Xcel Energy, WDNR, Merjent, NPMS and ATC.



**Figure 5b. ENVIRONMENTAL DATA
WEST ROUTE**

BAYFIELD SECOND CIRCUIT TRANSMISSION LINE PROJECT

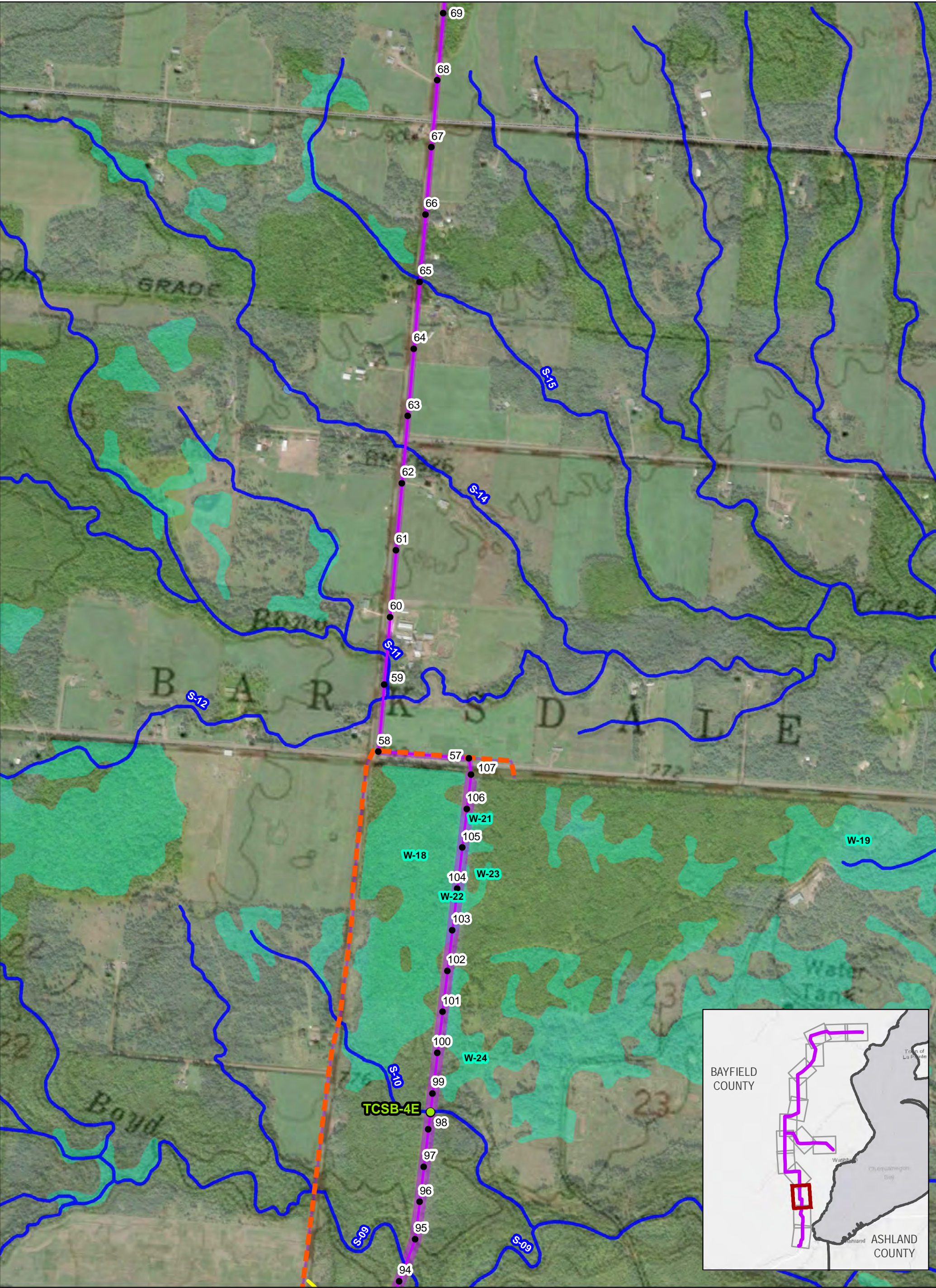


This information is believed to be correct, but is subject to change and carries no warranty. It is intended for reference purposes only. Applicant owned and operated facility locations are approximate. Data courtesy of Xcel Energy, WDNR, Merjent, NPMS and ATC.

● Proposed Structure	▨ Hydric Soils	▭ Substation Footprint
● Washburn Switch	▬ West Route Corridor	▭ Township
● Temporary Clear Span Bridge	▬ Waterbodies	
▬ West Route	▬ Wetlands (WB-XX)	
▬ Bypass Lines	▬ 100 Year Floodplain	
▬ Off Right of Way Access		
▬ Streams (S-XX)		

0 330 660 1,320 Feet

N



**Figure 5b. ENVIRONMENTAL DATA
WEST ROUTE**

BAYFIELD SECOND CIRCUIT TRANSMISSION LINE PROJECT

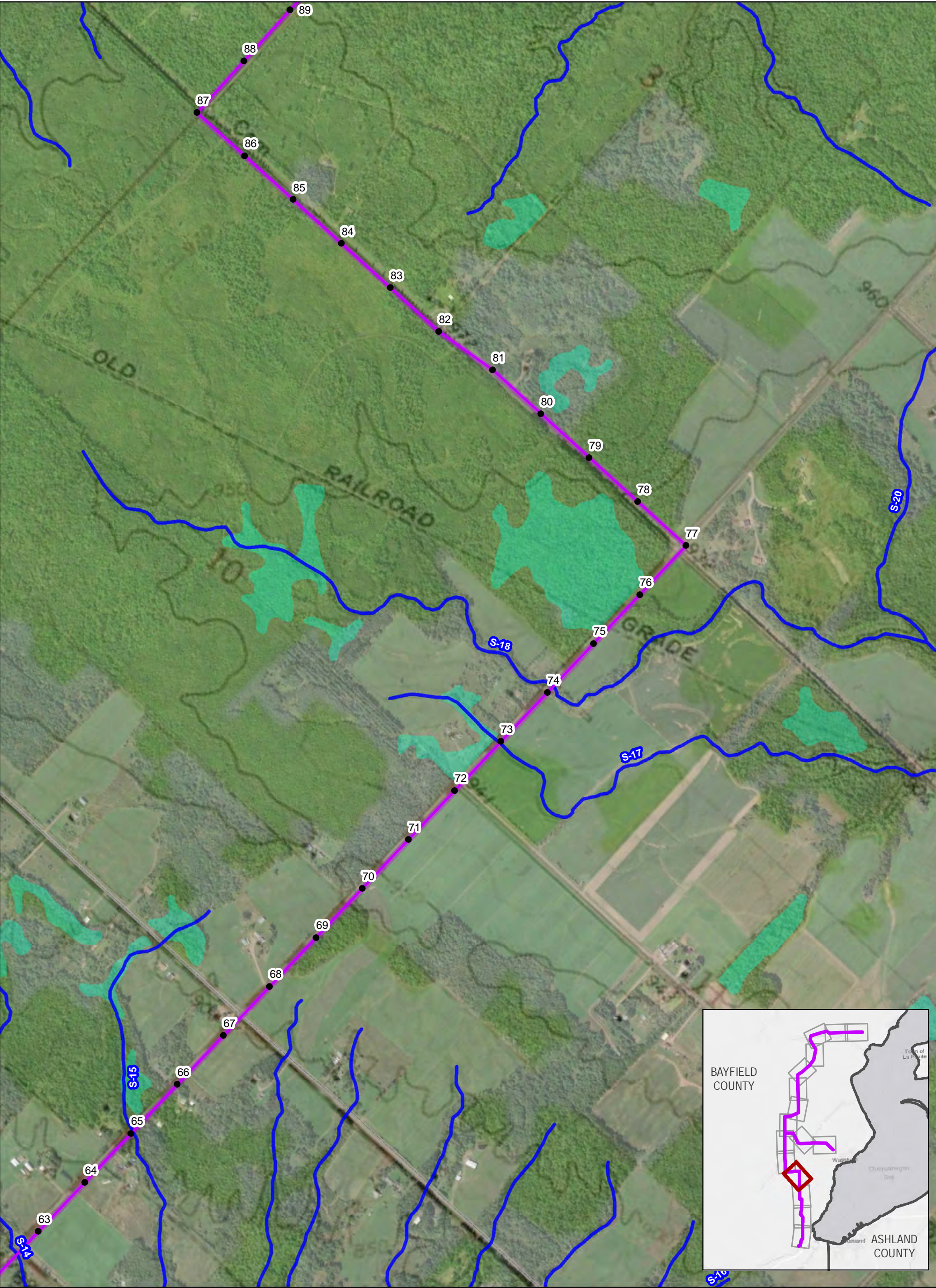


This information is believed to be correct, but is subject to change and carries no warranty. It is intended for reference purposes only. Applicant owned and operated facility locations are approximate. Data courtesy of Xcel Energy, WDNR, Merjent, NPMS and ATC.

● Proposed Structure	▨ Hydric Soils	▭ Substation Footprint
● Washburn Switch	▬ West Route Corridor	▭ Township
● Temporary Clear Span Bridge	▬ Waterbodies	
▬ West Route	▬ Wetlands (WB-XX)	
▬ Bypass Lines	▬ 100 Year Floodplain	
▬ Off Right of Way Access		
▬ Streams (S-XX)		

0 330 660 1,320 Feet

N



**Figure 5b. ENVIRONMENTAL DATA
WEST ROUTE**

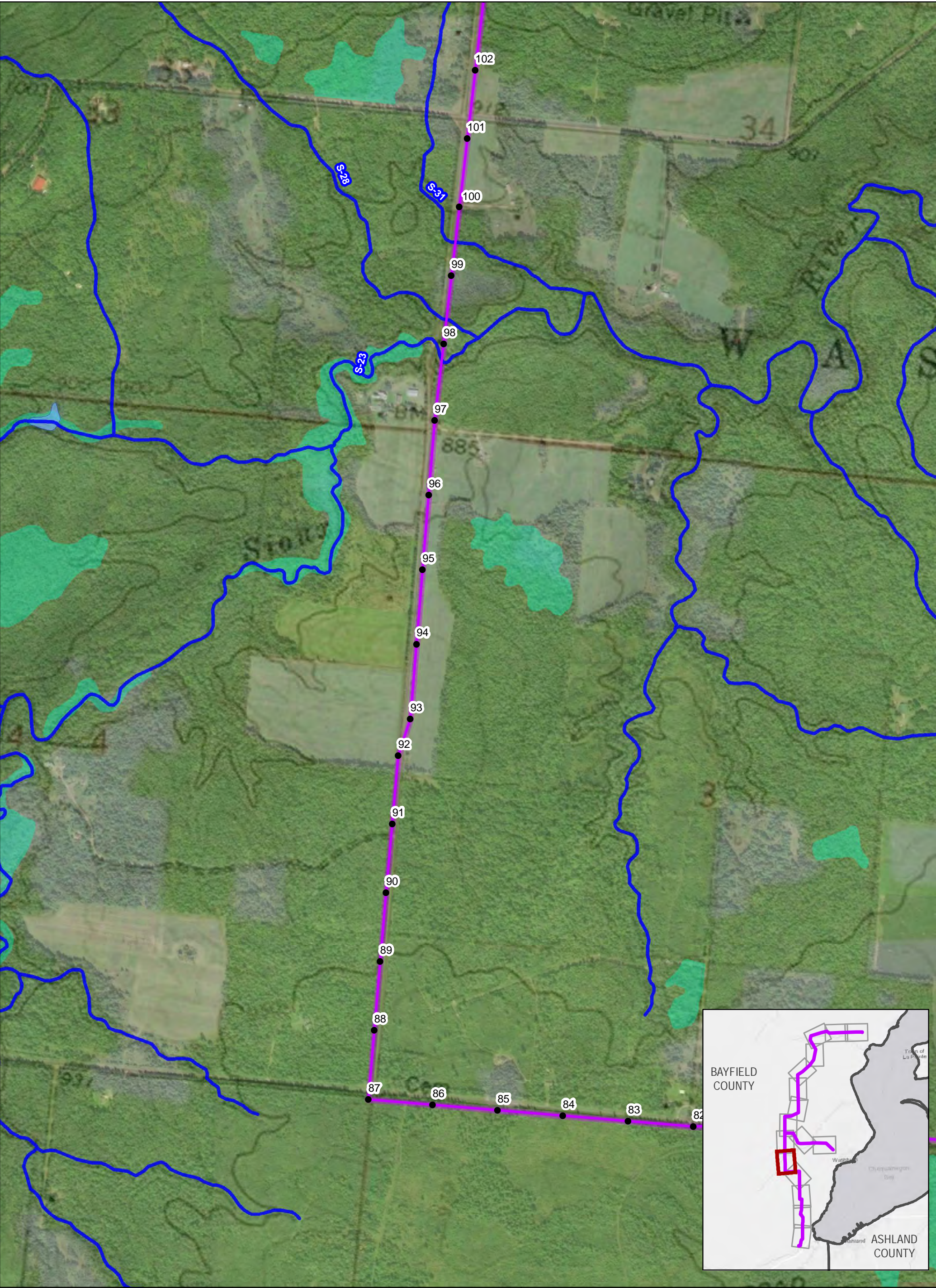
BAYFIELD SECOND CIRCUIT TRANSMISSION LINE PROJECT



This information is believed to be correct, but is subject to change and carries no warranty. It is intended for reference purposes only. Applicant owned and operated facility locations are approximate. Data courtesy of Xcel Energy, WDNR, Merjent, NPMS and ATC.

● Proposed Structure	▨ Hydric Soils	▭ Substation Footprint
● Washburn Switch	▬ West Route Corridor	▭ Township
● Temporary Clear Span Bridge	▬ Waterbodies	
▬ West Route	▬ Wetlands (WB-XX)	
▬ Bypass Lines	▬ 100 Year Floodplain	
▬ Off Right of Way Access		
▬ Streams (S-XX)		

03306601,320 Feet



**Figure 5b. ENVIRONMENTAL DATA
WEST ROUTE**

BAYFIELD SECOND CIRCUIT TRANSMISSION LINE PROJECT

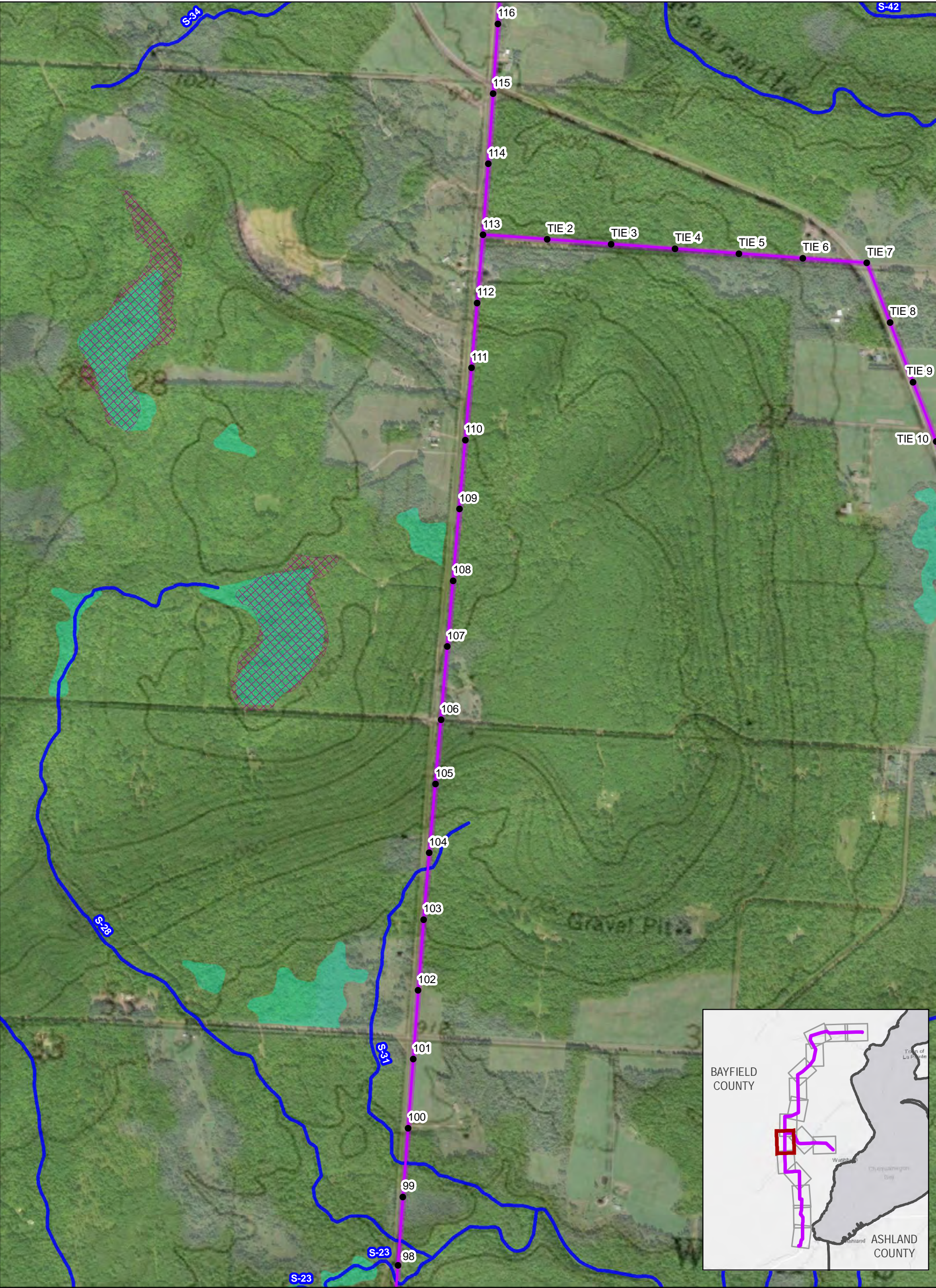


This information is believed to be correct, but is subject to change and carries no warranty. It is intended for reference purposes only. Applicant owned and operated facility locations are approximate. Data courtesy of Xcel Energy, WDNR, Merjent, NPMS and ATC.

● Proposed Structure	▨ Hydric Soils	▭ Substation Footprint
● Washburn Switch	▬ West Route Corridor	▭ Township
● Temporary Clear Span Bridge	▬ Waterbodies	
▬ West Route	▬ Wetlands (WB-XX)	
▬ Bypass Lines	▬ 100 Year Floodplain	
▬ Off Right of Way Access		
▬ Streams (S-XX)		

0 330 660 1,320 Feet

N



**Figure 5b. ENVIRONMENTAL DATA
WEST ROUTE**

BAYFIELD SECOND CIRCUIT TRANSMISSION LINE PROJECT



This information is believed to be correct, but is subject to change and carries no warranty. It is intended for reference purposes only. Applicant owned and operated facility locations are approximate. Data courtesy of Xcel Energy, WDNR, Merjent, NPMS and ATC.

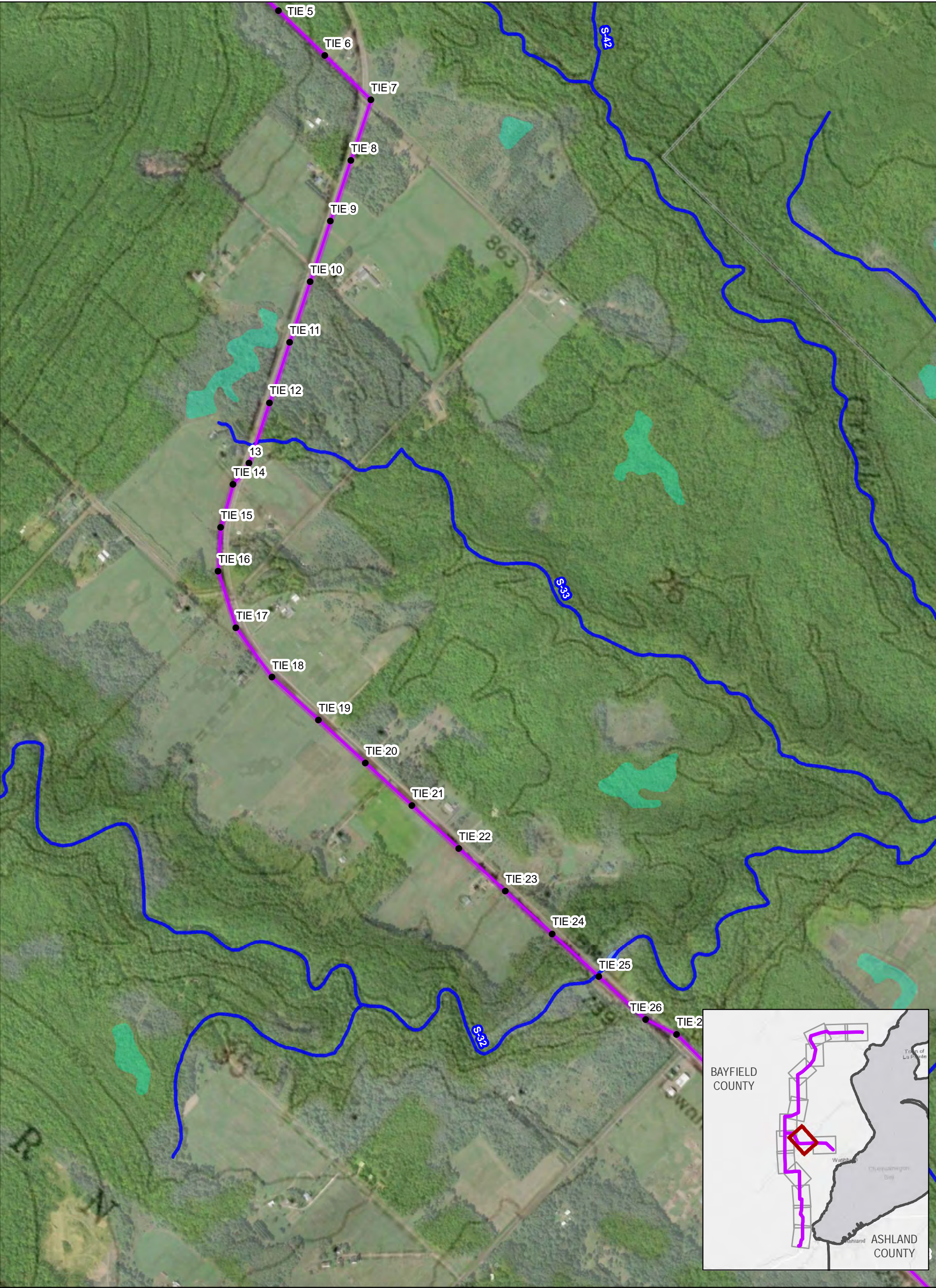
- Proposed Structure
- Washburn Switch
- Temporary Clear Span Bridge
- West Route
- Bypass Lines
- Off Right of Way Access
- Streams (S-XX)

- Hydric Soils
- West Route Corridor
- Waterbodies
- Wetlands (WB-XX)
- 100 Year Floodplain

- Substation Footprint
- Township

03306601,320 Feet

N



**Figure 5b. ENVIRONMENTAL DATA
WEST ROUTE**

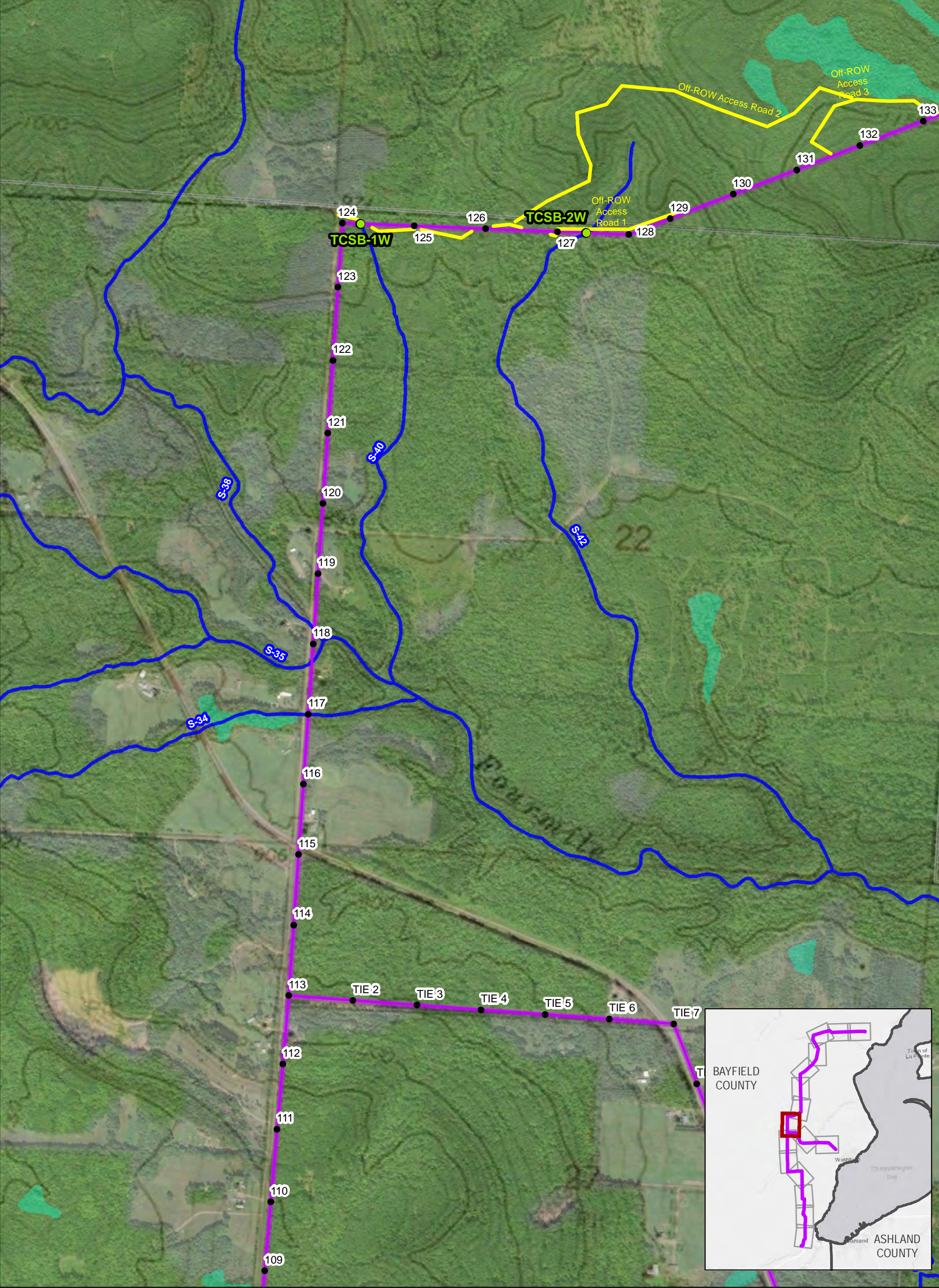
BAYFIELD SECOND CIRCUIT TRANSMISSION LINE PROJECT



This information is believed to be correct, but is subject to change and carries no warranty. It is intended for reference purposes only. Applicant owned and operated facility locations are approximate. Data courtesy of Xcel Energy, WDNR, Merjent, NPMS and ATC.

● Proposed Structure	▨ Hydric Soils	▭ Substation Footprint
● Washburn Switch	▬ West Route Corridor	▭ Township
● Temporary Clear Span Bridge	▬ Waterbodies	
▬ West Route	▬ Wetlands (WB-XX)	
▬ Bypass Lines	▬ 100 Year Floodplain	
▬ Off Right of Way Access		
▬ Streams (S-XX)		

03306601,320 Feet



**Figure 5b. ENVIRONMENTAL DATA
WEST ROUTE**

BAYFIELD SECOND CIRCUIT TRANSMISSION LINE PROJECT

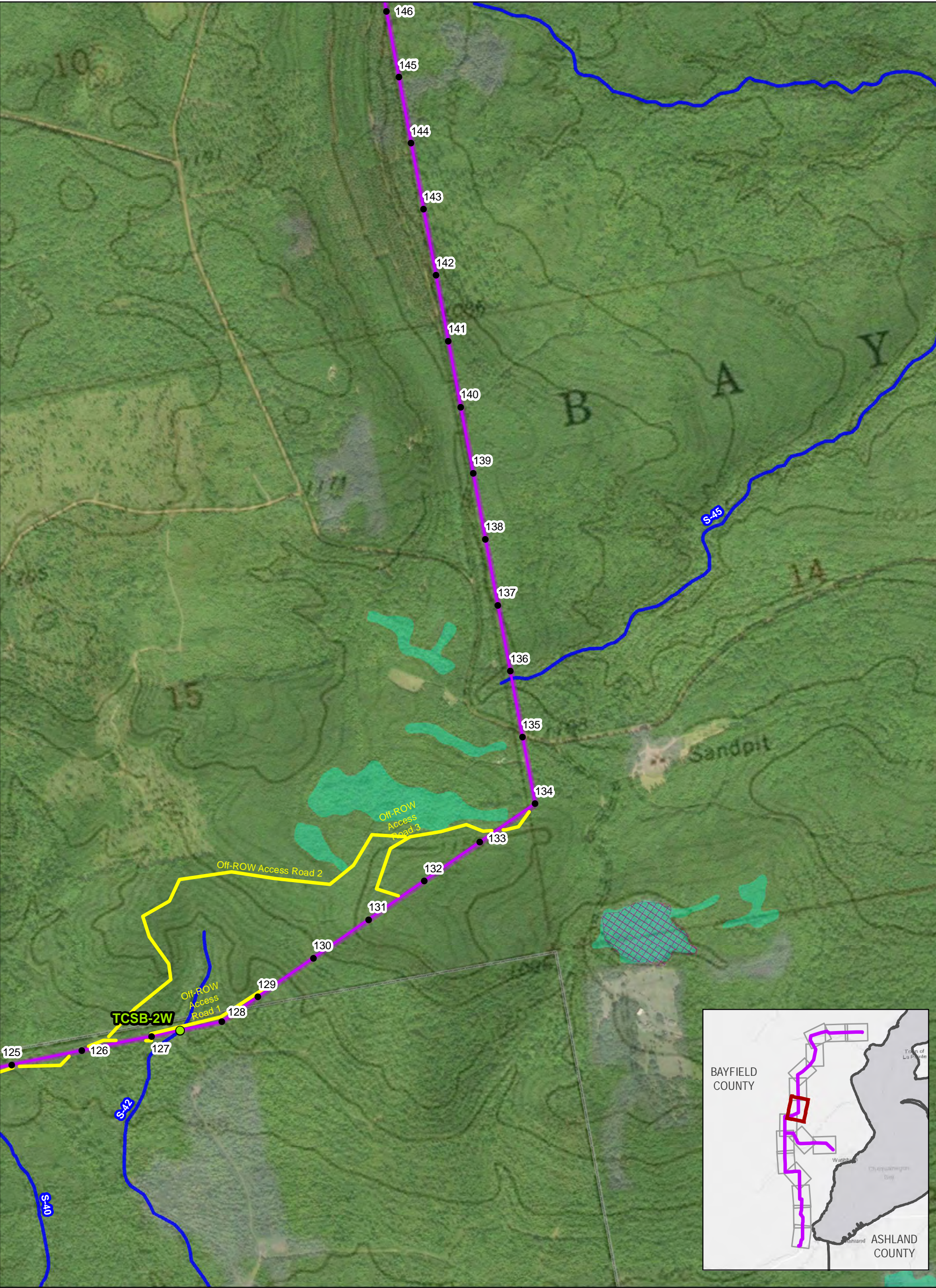


This information is believed to be correct, but is subject to change and carries no warranty. It is intended for reference purposes only. Applicant owned and operated facility locations are approximate. Data courtesy of Xcel Energy, WDNR, Merjent, NPMS and ATC.

● Proposed Structure	▨ Hydric Soils	▭ Substation Footprint
● Washburn Switch	▬ West Route Corridor	▭ Township
● Temporary Clear Span Bridge	▬ Waterbodies	
~ West Route	▬ Wetlands (WB-XX)	
↗ Bypass Lines	▬ 100 Year Floodplain	
↗ Off Right of Way Access		
~ Streams (S-XX)		

03306601,320 Feet

N



**Figure 5b. ENVIRONMENTAL DATA
WEST ROUTE**

BAYFIELD SECOND CIRCUIT TRANSMISSION LINE PROJECT



This information is believed to be correct, but is subject to change and carries no warranty. It is intended for reference purposes only. Applicant owned and operated facility locations are approximate. Data courtesy of Xcel Energy, WDNR, Merjent, NPMS and ATC.

● Proposed Structure	▨ Hydric Soils	▭ Substation Footprint
● Washburn Switch	▬ West Route Corridor	▭ Township
● Temporary Clear Span Bridge	▬ Waterbodies	
▬ West Route	▬ Wetlands (WB-XX)	
▬ Bypass Lines	▬ 100 Year Floodplain	
▬ Off Right of Way Access		
▬ Streams (S-XX)		

0 330 660 1,320 Feet

N



**Figure 5b. ENVIRONMENTAL DATA
WEST ROUTE**

BAYFIELD SECOND CIRCUIT TRANSMISSION LINE PROJECT



This information is believed to be correct, but is subject to change and carries no warranty. It is intended for reference purposes only. Applicant owned and operated facility locations are approximate. Data courtesy of Xcel Energy, WDNR, Merjent, NPMS and ATC.

●

Proposed Structure

●

Washburn Switch

●

Temporary Clear Span Bridge

—

West Route

—

Bypass Lines

—

Off Right of Way Access

—

Streams (S-XX)

▨

Hydric Soils

—

West Route Corridor

—

Waterbodies

—

Wetlands (WB-XX)

—

100 Year Floodplain

▭

Substation Footprint

▭

Township

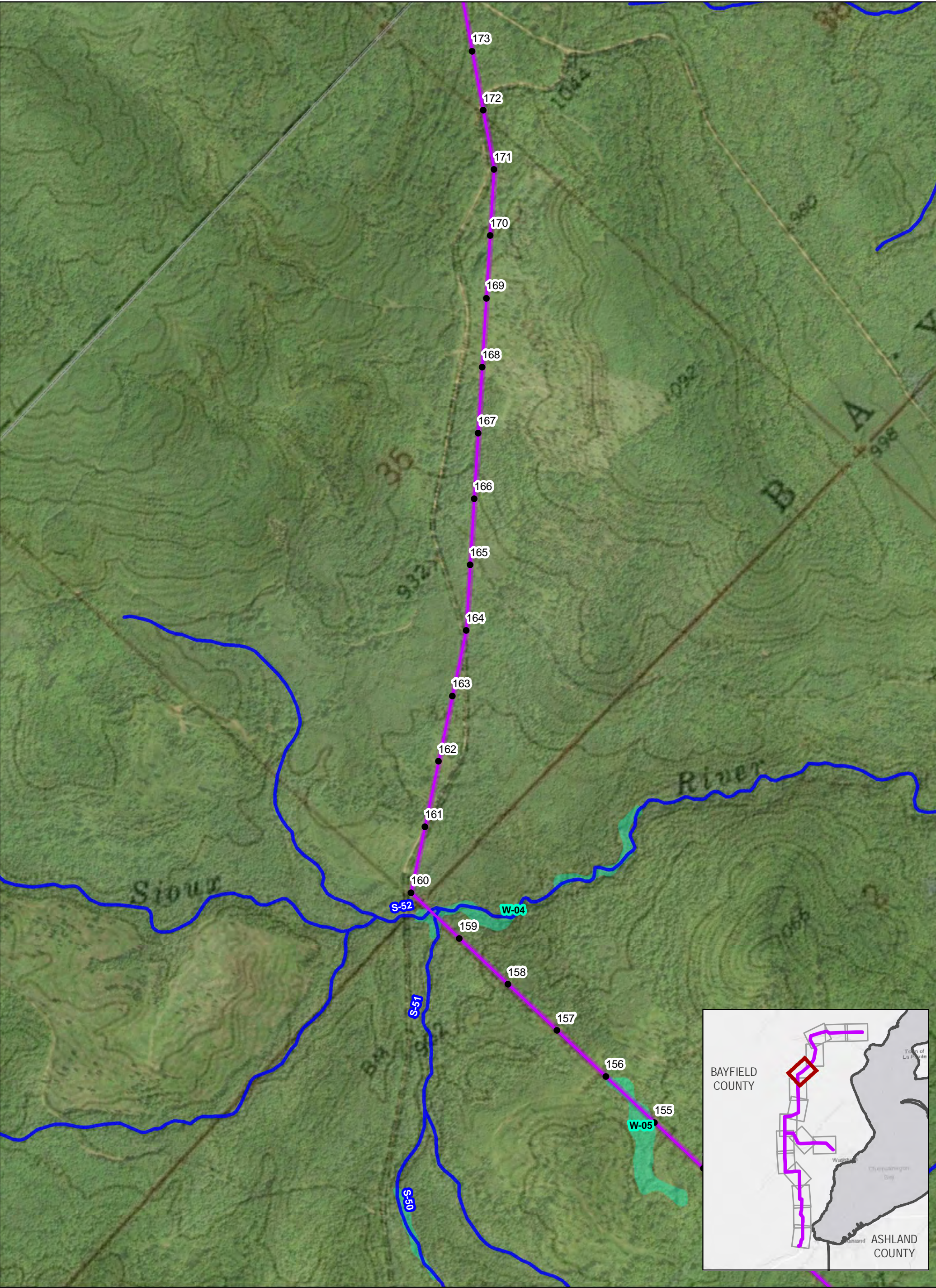
0

330

660

1,320 Feet

N



**Figure 5b. ENVIRONMENTAL DATA
WEST ROUTE**

BAYFIELD SECOND CIRCUIT TRANSMISSION LINE PROJECT



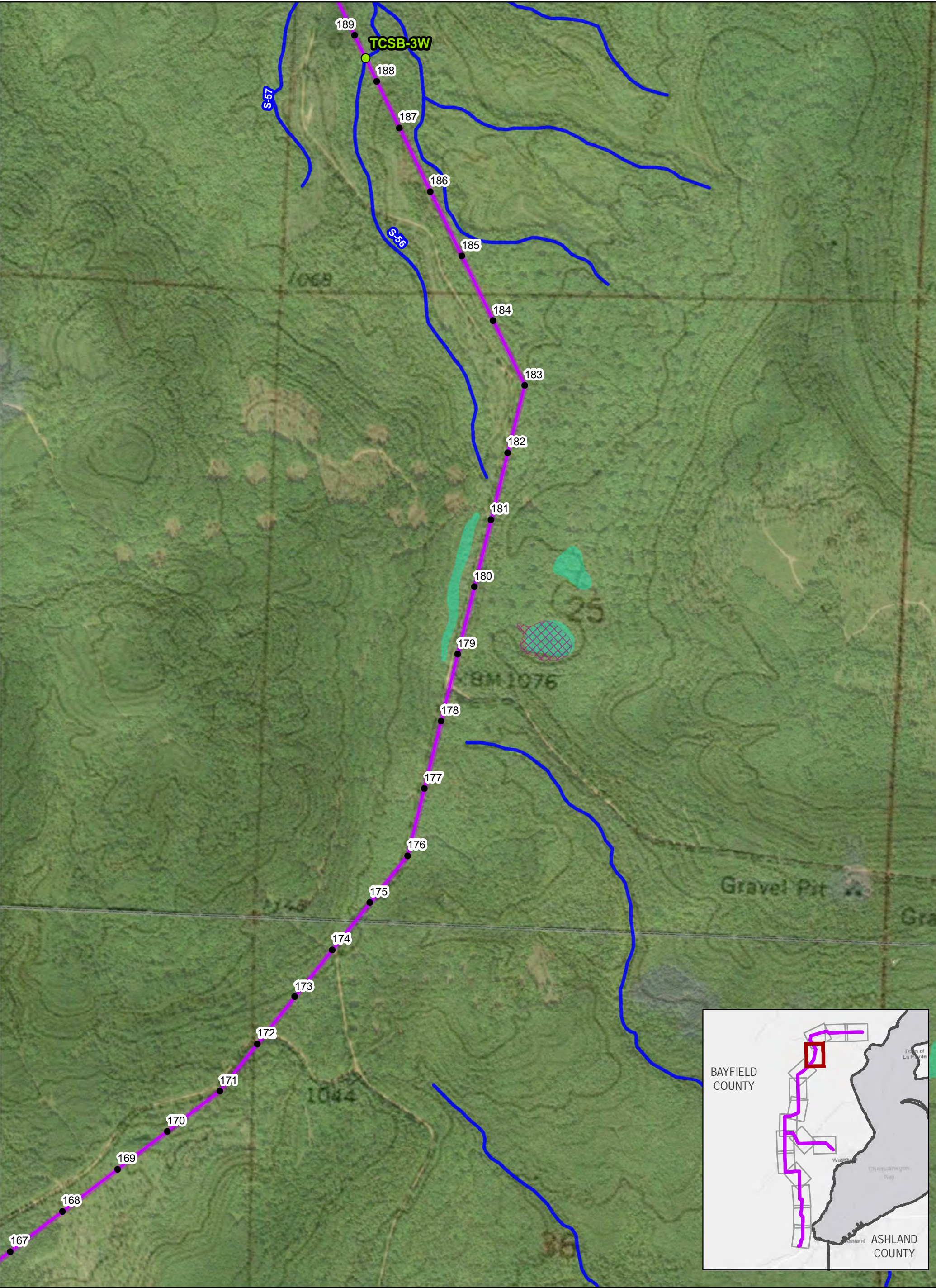
This information is believed to be correct, but is subject to change and carries no warranty. It is intended for reference purposes only. Applicant owned and operated facility locations are approximate. Data courtesy of Xcel Energy, WDNR, Merjent, NPMS and ATC.

- Proposed Structure
- Washburn Switch
- Temporary Clear Span Bridge
- ~ West Route
- ↗ Bypass Lines
- ↘ Off Right of Way Access
- ~ Streams (S-XX)

- ▨ Hydric Soils
- █ West Route Corridor
- █ Waterbodies
- █ Wetlands (WB-XX)
- █ 100 Year Floodplain

- ▭ Substation Footprint
- ▭ Township

03306601,320 Feet



**Figure 5b. ENVIRONMENTAL DATA
WEST ROUTE**

BAYFIELD SECOND CIRCUIT TRANSMISSION LINE PROJECT

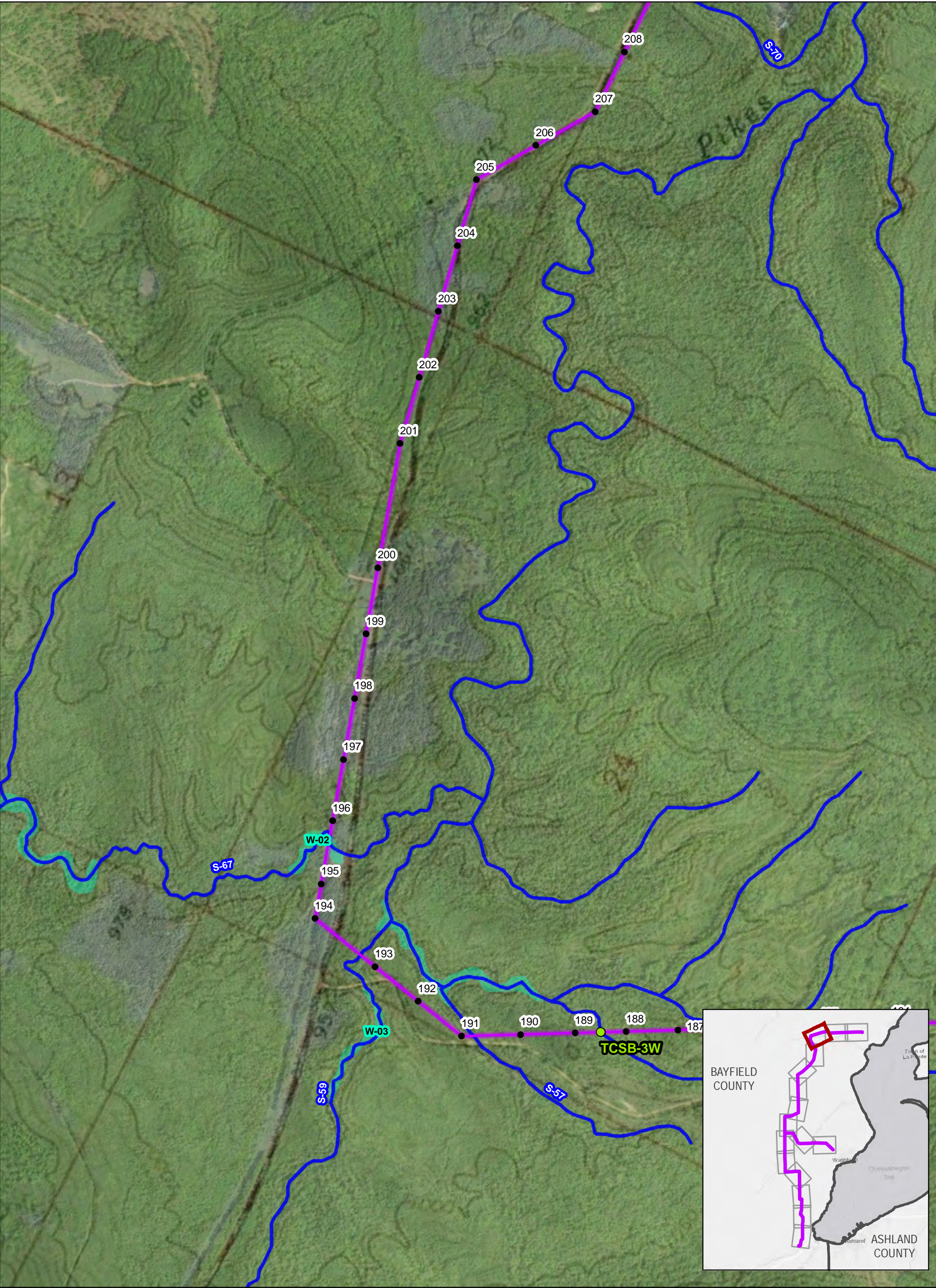


This information is believed to be correct, but is subject to change and carries no warranty. It is intended for reference purposes only. Applicant owned and operated facility locations are approximate. Data courtesy of Xcel Energy, WDNR, Merjent, NPMS and ATC.

● Proposed Structure	▨ Hydric Soils	▭ Substation Footprint
● Washburn Switch	▬ West Route Corridor	▭ Township
● Temporary Clear Span Bridge	▬ Waterbodies	
▬ West Route	▬ Wetlands (WB-XX)	
▬ Bypass Lines	▬ 100 Year Floodplain	
▬ Off Right of Way Access		
▬ Streams (S-XX)		

0 330 660 1,320 Feet

N



**Figure 5b. ENVIRONMENTAL DATA
WEST ROUTE**

BAYFIELD SECOND CIRCUIT TRANSMISSION LINE PROJECT



This information is believed to be correct, but is subject to change and carries no warranty. It is intended for reference purposes only. Applicant owned and operated facility locations are approximate. Data courtesy of Xcel Energy, WDNR, Merjent, NPMS and ATC.

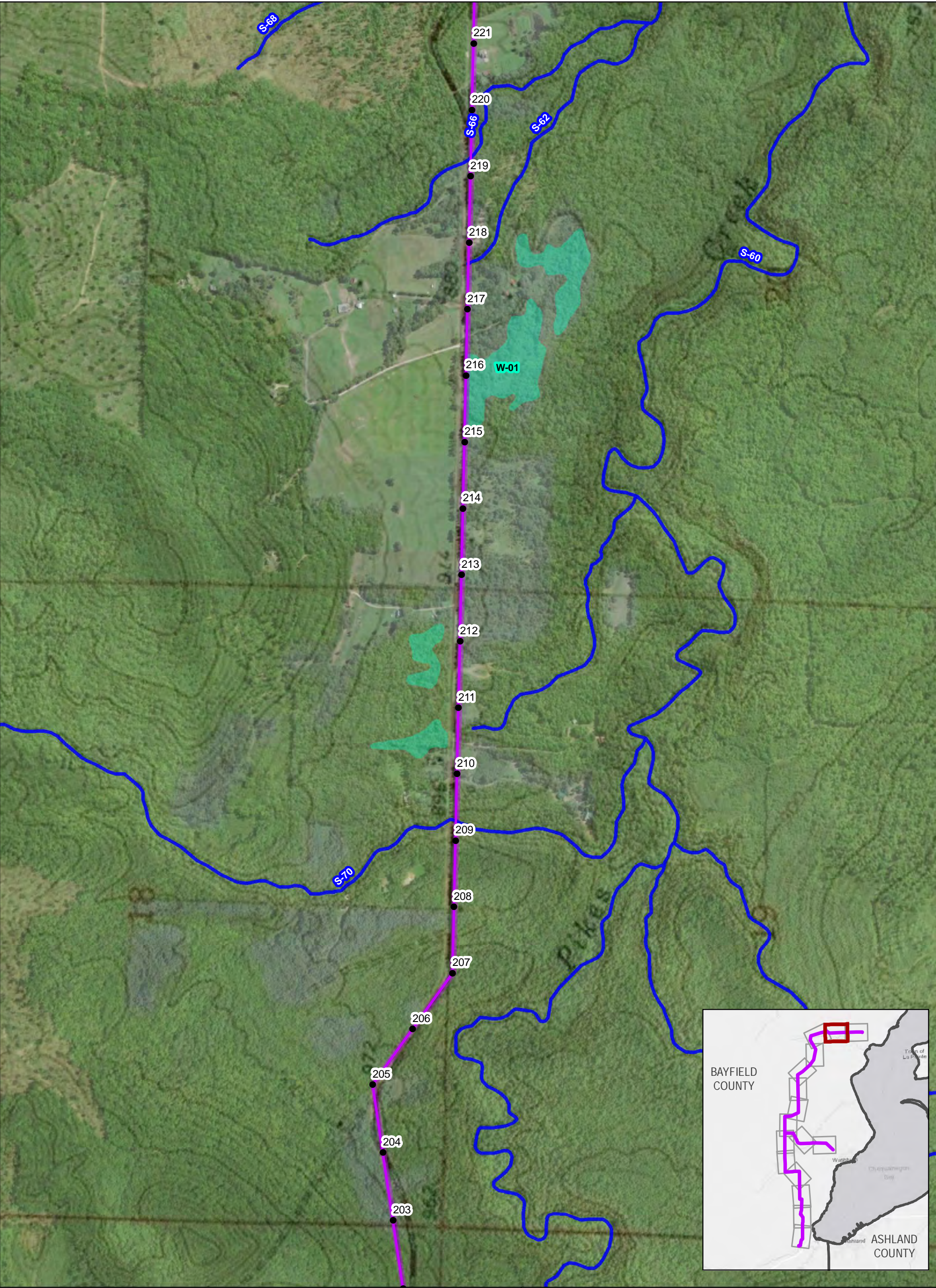
- Proposed Structure
- Washburn Switch
- Temporary Clear Span Bridge
- ~ West Route
- ↗ Bypass Lines
- ↘ Off Right of Way Access
- ~ Streams (S-XX)

- ▨ Hydric Soils
- ▬ West Route Corridor
- ▬ Waterbodies
- ▬ Wetlands (WB-XX)
- ▬ 100 Year Floodplain

- ▭ Substation Footprint
- ▭ Township

03306601,320 Feet

➤



**Figure 5b. ENVIRONMENTAL DATA
WEST ROUTE**

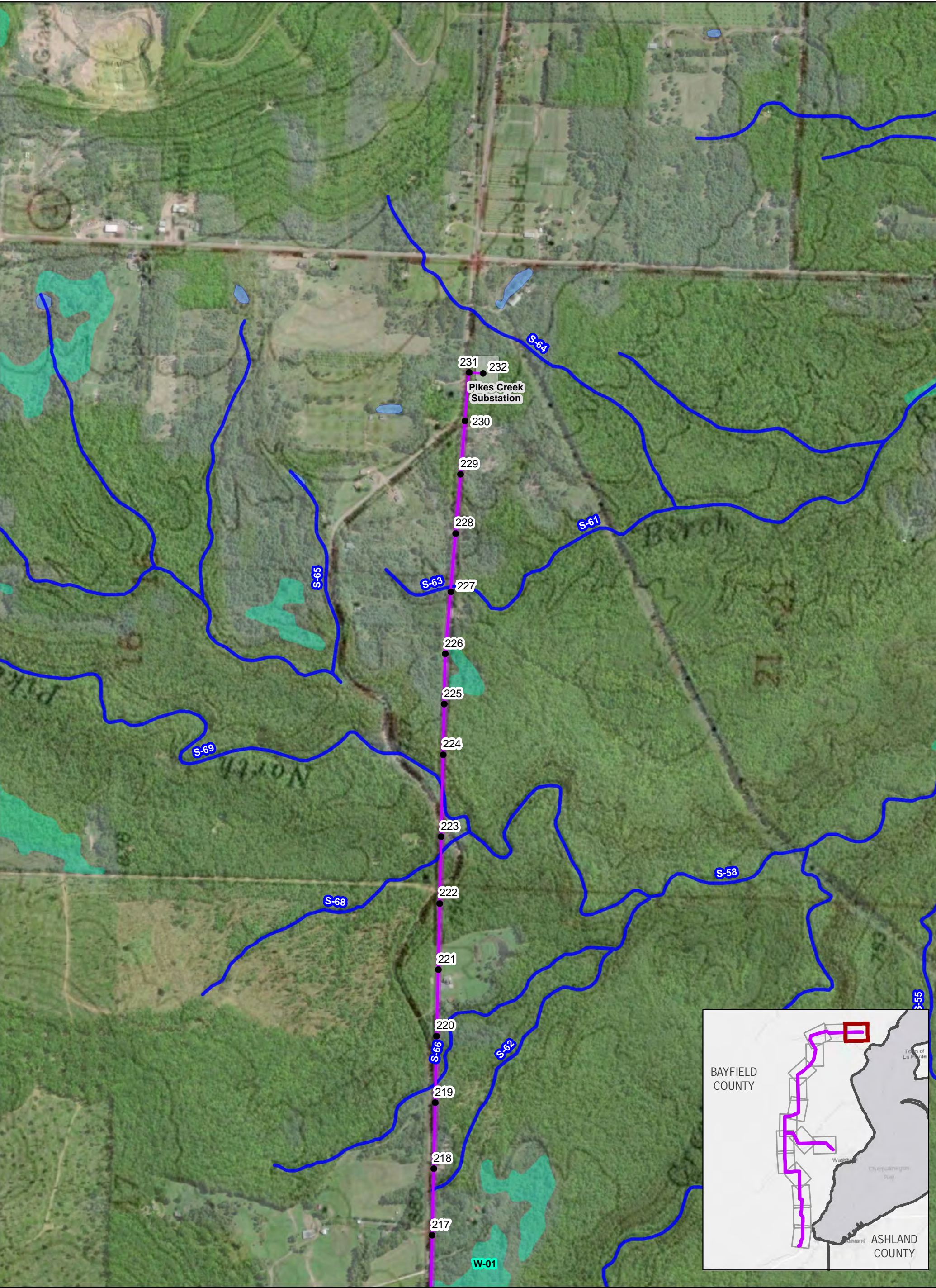
BAYFIELD SECOND CIRCUIT TRANSMISSION LINE PROJECT



This information is believed to be correct, but is subject to change and carries no warranty. It is intended for reference purposes only. Applicant owned and operated facility locations are approximate. Data courtesy of Xcel Energy, WDNR, Merjent, NPMS and ATC.

● Proposed Structure	▨ Hydric Soils	▭ Substation Footprint
● Washburn Switch	▬ West Route Corridor	▭ Township
● Temporary Clear Span Bridge	▬ Waterbodies	
▬ West Route	▬ Wetlands (WB-XX)	
▬ Bypass Lines	▬ 100 Year Floodplain	
▬ Off Right of Way Access		
▬ Streams (S-XX)		

03306601,320 Feet



**Figure 5b. ENVIRONMENTAL DATA
WEST ROUTE**

BAYFIELD SECOND CIRCUIT TRANSMISSION LINE PROJECT



This information is believed to be correct, but is subject to change and carries no warranty. It is intended for reference purposes only. Applicant owned and operated facility locations are approximate. Data courtesy of Xcel Energy, WDNR, Merjent, NPMS and ATC.

- Proposed Structure
- Washburn Switch
- Temporary Clear Span Bridge
- ~ West Route
- ↗ Bypass Lines
- ↘ Off Right of Way Access
- ~ Streams (S-XX)

- ▨ Hydric Soils
- ▬ West Route Corridor
- ▬ Waterbodies
- ▬ Wetlands (WB-XX)
- ▬ 100 Year Floodplain

- ▭ Substation Footprint
- ▭ Township

03306601,320 Feet

z