



BLOOMINGTON POLLINATOR HABITAT

August 26, 2020



PANELISTS

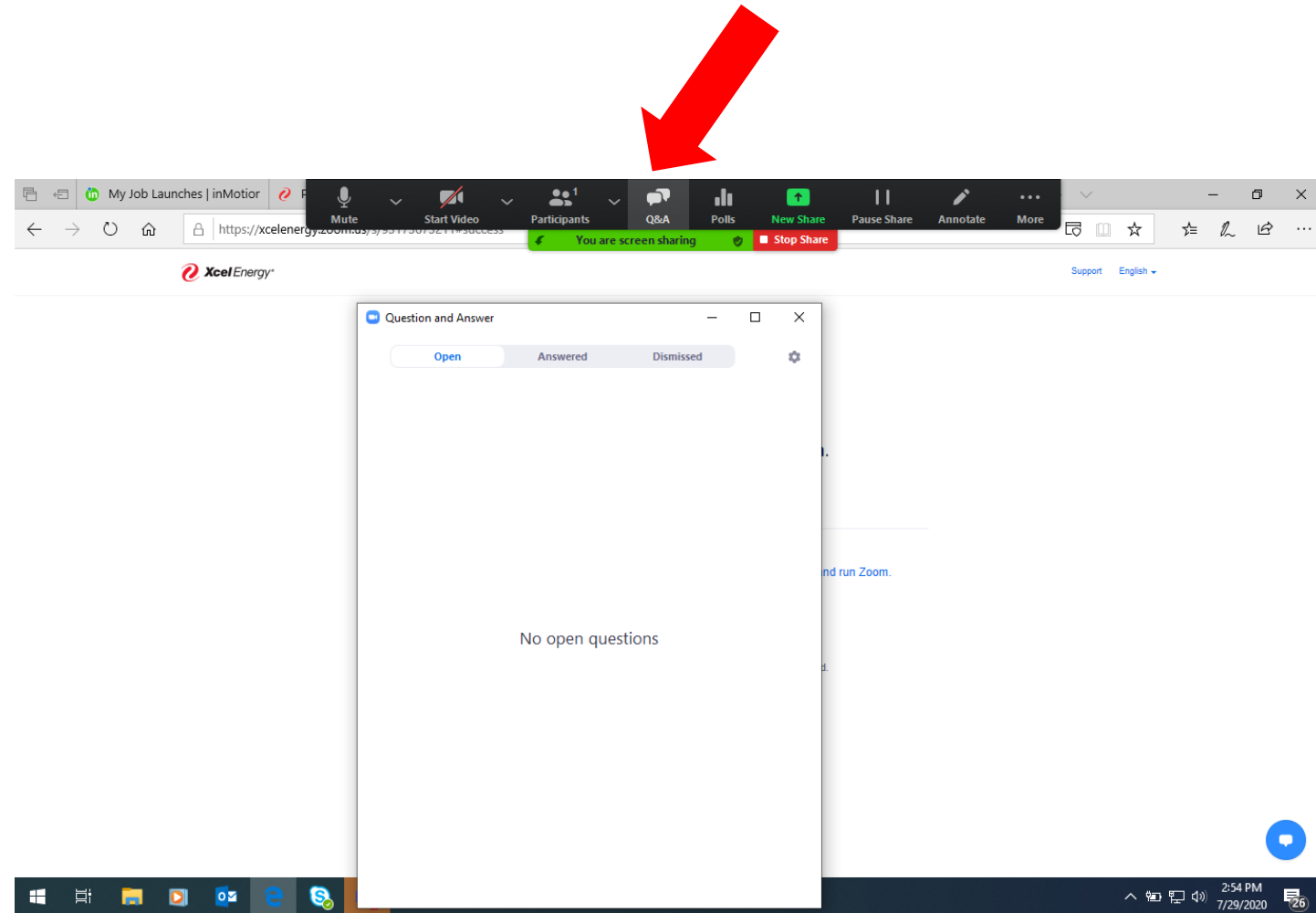
1. Chris Berglund, Senior Siting and Land Rights Agent
2. Brad Weidenfeller, Vegetation Management
3. Michelle Swanson, Community Relations
4. Becca Tucker, Great River Greening
5. Sarah Gedrose, Senior Communications and Public Affairs



Welcome!

Participants are muted

Click on Q & A to enter a question



Xcel Energy Pollinator Program Overview

Supporting habitat over 30 years

Managing more than 2,100 acres

- 44 active sites (variety of locations)
- Minnesota, Wisconsin, North Dakota
- Ranging from less than 1 to 800 acres
- Educate, inspire, partner



Great River Greening

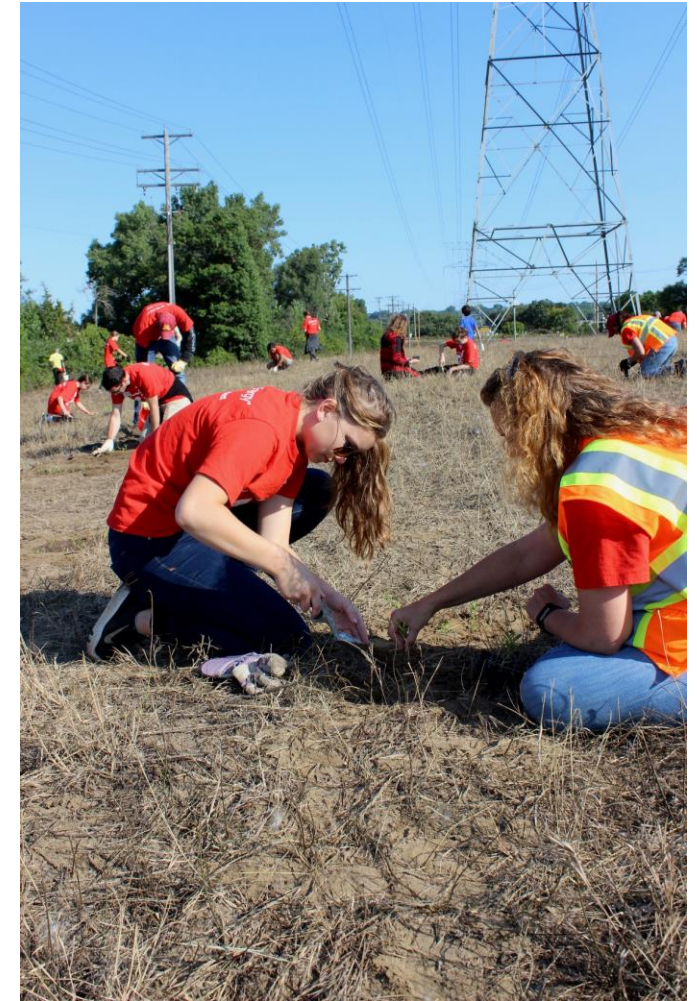
25 years of restoring Land, Water, and Wonder

Facilitating habitat restoration through partnerships and community engagement

- St. Paul based non-profit
- 25,000 acres, 44,000 volunteers

Pollinator Seed Initiative

- Funds from the Patrick and Aimee Butler Family Foundation
- Development of native seed nurseries
- 5 partners, over 100 acres



www.greatrivergreening.org

Bloomington Pollinator Habitat

2017



2020



Bloomington Expansion

Expanding site another 13 acres
between 90th Street South to Old
Shakopee Road

Walking path to be mowed



Schedule

Site prep this summer

Seeding in the fall

Maintain the site

Harvest seeds

Volunteer opportunities



Contact Us

Chris Berglund - Christopher.D.Berglund@xcelenergy.com or 612-330-6471

Sarah Gedrose – Sarah.Gedrose@xcelenergy.com or 612-330-5701

Michelle Swanson - michelle.m.swanson@xcelenergy.com or 952-380-2604

Becca Tucker - rtucker@greatrivergreening.org or 651-272-3982

[Xcelenergy.com/pollinator](https://xcelenergy.com/pollinator)



QUESTIONS?