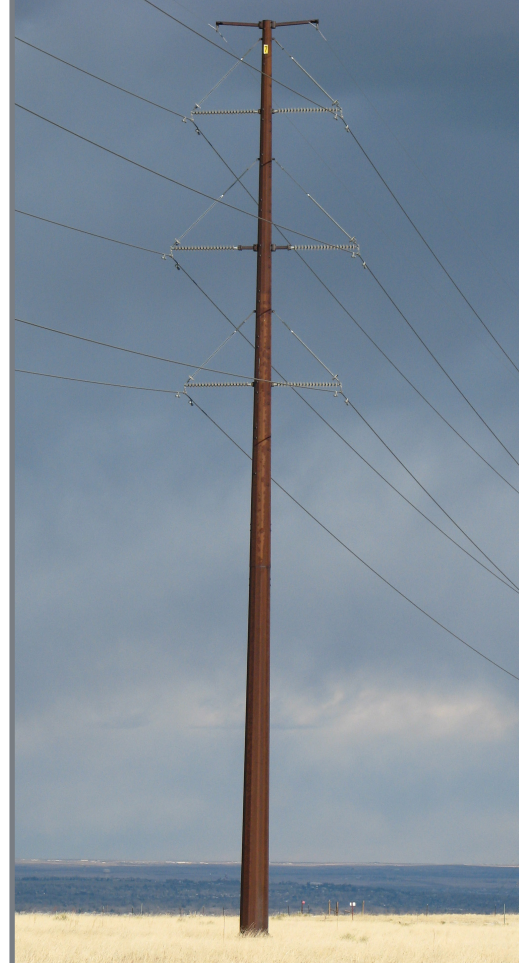




1800 Larimer Street, Suite 400  
Denver, CO 80202



Construction on the Northern Colorado Area Plan includes single-pole structures ranging between 80 and 130 feet in height.

Find out more about the Northern Colorado Area Plan and submit comments at [xcelenergy.com/northerncolorado](http://xcelenergy.com/northerncolorado).

The open house will give residents an opportunity to learn more about the project, view potential route maps, ask questions and provide feedback on the project and potential routes. Please stop by anytime. No formal presentation is scheduled.

January 24, 2018  
5 p.m. - 7:30 p.m.  
Eaton Recreation Center  
Aspen and Maple Rooms  
1675 3rd Street  
Eaton, Colorado 80615

## Public Open House Schedule

**New infrastructure will deliver improved electric reliability and enhanced customer serving capacity**

You are invited to attend a public open house hosted by Xcel Energy to learn more about a proposed transmission line project in your area. The Northern Colorado Area Plan would increase generation capacity, enhance electric reliability and expand load-serving capability of the Xcel Energy electric transmission system north of Greeley. The proposed project includes building approximately 25 miles of new 115-kilovolt (kV) and 230-kV transmission line between the Western Area Power Authority (WAPA) Ault Substation and a location northeast of Greeley where the new 115-kV transmission line connects to Xcel Energy's existing 115-kV line near the Cloverly Substation. The project also includes construction of two new substations and the expansion of two existing substation facilities. The proposed project is the first step in replacing the existing aging 44-kV infrastructure throughout the region with higher voltage facilities. The 44-kV system is one of the oldest transmission assets owned by Xcel Energy, with infrastructure dating back to the early 1900's.

## Xcel Energy hosting public open house for proposed Northern Colorado Area Plan



# Project Components

The proposed project includes 25 miles of new 115-kV and 230-kV transmission line, between the WAPA Ault Substation, northwest of Ault, and a location northeast of Greeley where the new 115-kV transmission line connects to Xcel Energy's existing 115-kV line near Cloverly Substation. The study area for the proposed transmission line is shown on the map within the dashed line. The two new substations will be located within the yellow alternative transmission route corridors, with final locations anticipated near Ault and Eaton. The alternative route corridors shown on the map are 1200 feet wide, but the proposed transmission line, if built, will only require a 150-foot right-of-way. Pending approvals, the project is expected to be completed by 2020.

## Regulatory Filings

Xcel Energy filed a Certificate of Public Convenience and Necessity (CPCN) application with the Colorado Public Utilities Commission (CPUC) on March 9, 2017 to construct the Northern Colorado Area Plan. When proposing a high voltage transmission line project, investor-owned utilities must file a CPCN application with the CPUC. You can review all regulatory filings on the CPUC web site at [https://www.dora.state.co.us/pls/efi/EFI\\_Search\\_UI](https://www.dora.state.co.us/pls/efi/EFI_Search_UI) search by entering 17A-0146E in the "Proceeding Number" field. The CPCN process allows Xcel Energy to proceed with implementation, but does not decide the specific routes and locations of the transmission lines and other infrastructure. Those issues are determined through a separate local government siting process. Xcel Energy anticipates filing for development permit approvals with Weld County and the Town of Ault.

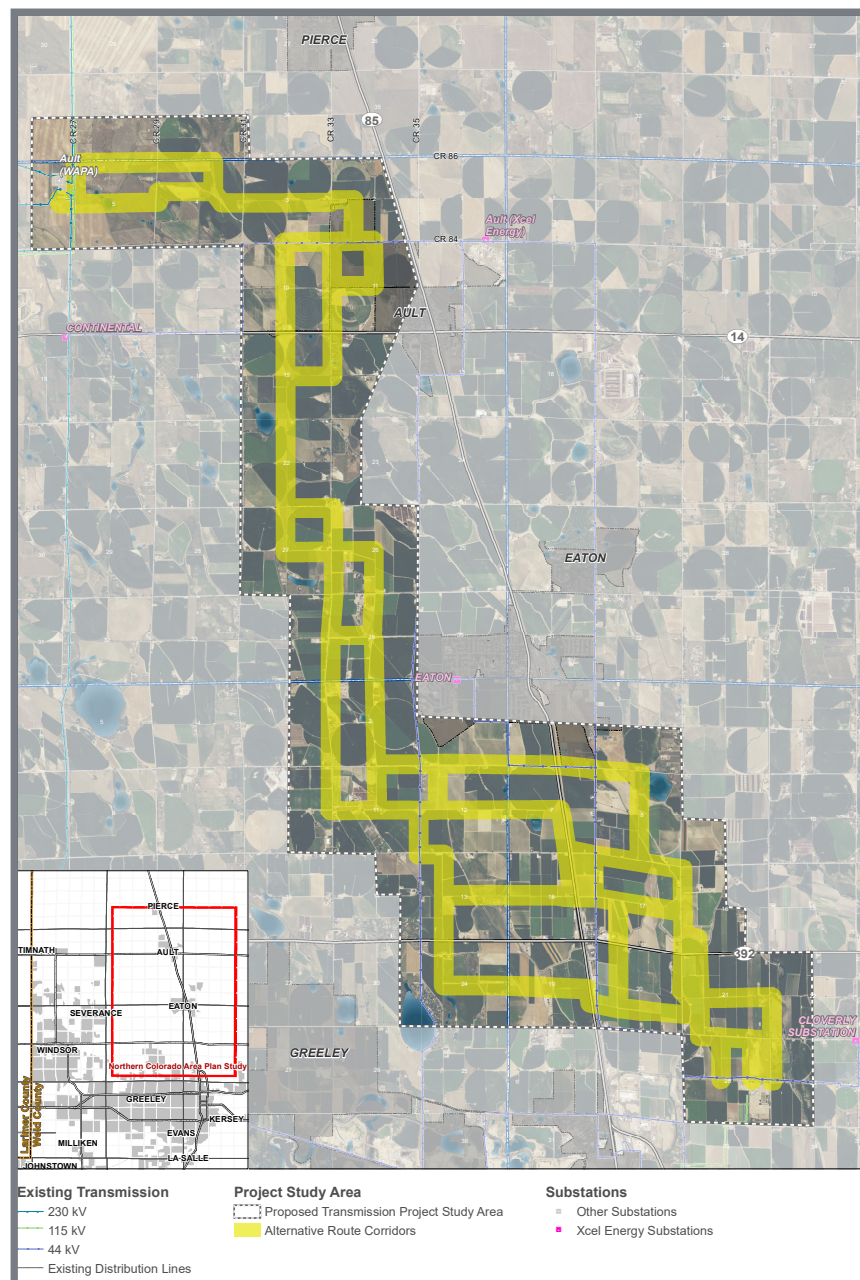
## Schedule (Pending Approval)

**2018** – File local, state, federal permits

**2019** – Begin construction

**2020** – Project placed in-service

**Northern Colorado Area Plan:**  
Proposed Transmission Line Project Area



## Contact Us

Learn more about the project, view detailed maps, submit questions and leave comments at [xcelenergy.com/northerncolorado](https://xcelenergy.com/northerncolorado).

You can also reach us at 888.678.7640 or by emailing [northerncolorado@xcelenergy.com](mailto:northerncolorado@xcelenergy.com).