



Xcel Energy is proud to be able to help pollinators thrive

- We've created more than 2,100 acres of pollinator habitat in Minnesota, North Dakota and Wisconsin, and plan to keep growing.
- Our 45 pollinator sites range from one to 800 acres in size, and are located under our transmission lines, around substations, power plants, community solar gardens, a wind project and company office sites.
- We can't do it alone. We partner with state and federal agencies, communities and non-profit organizations to bring these habitats to life.

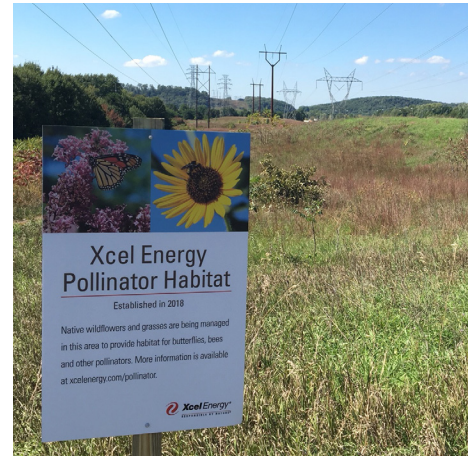
Why it matters

- **1/3 of our food crops require pollination**
- **More than 70% of flowering plants in the Midwest need pollinators**

How to help

- Plant native plants on your property that bloom from spring to fall, like milkweed and wildflowers.
- Reduce or eliminate pesticide use.
- Educate yourself and friends and family about the importance of pollinators. You could even take a beekeeping class!
- Go butterfly hunting by becoming a citizen scientist to collect data to help researchers.

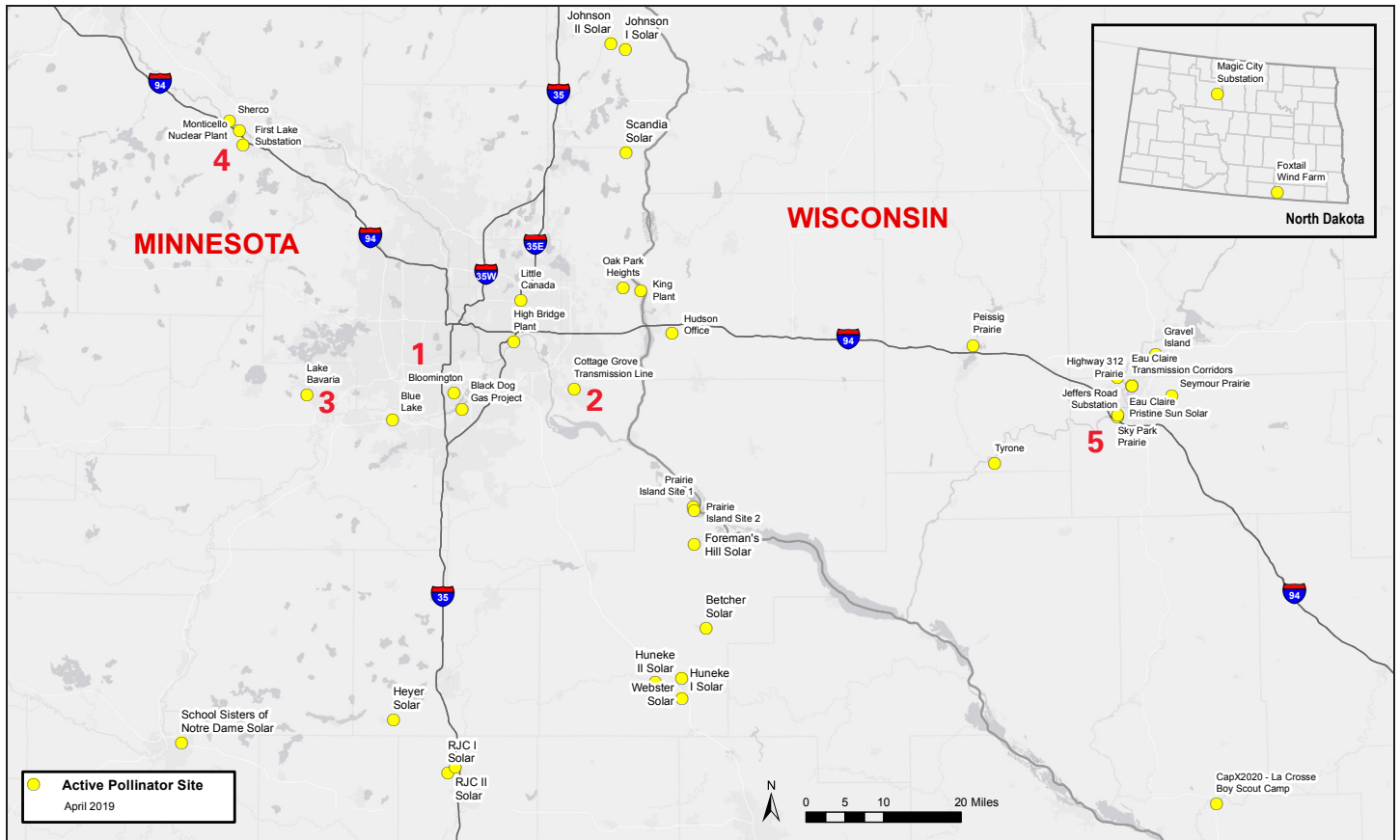
Xcel Energy and the contractors we employ do not use chemicals that are harmful to beneficial insects in our Vegetation Management practices. This includes not using neonicotinoids, which is of special concern to people working to improve bee populations.



Xcel Energy partnered with the U.S. Fish and Wildlife Service "Partners for Fish & Wildlife Program" in 2017 and 2018, and planted 25 acres of pollinator-friendly seed in Eau Claire under transmission lines near North High School.



Xcel Energy has developed 20 acres of native prairie land around our High Bridge Generating Station in St. Paul.



The City of Bloomington partnered with us to plant six acres of pollinator habitat under transmission lines.



We partnered with the City of Cottage Grove and the Minnesota Department of Natural Resources to restore 60 acres of native prairie habitat under transmission lines.



Xcel Energy employees and non-profit organization Great River Greening planted milkweed outside our Blue Lake Power Plant in Shakopee.



More than seven acres of pollinator habitat surround our substation in Monticello.



Children helped plant native wildflowers outside our company office in Eau Claire.

Learn more about our pollinator program by visiting xcelenergy.com/Pollinator.