





# TILE MAP INDEX

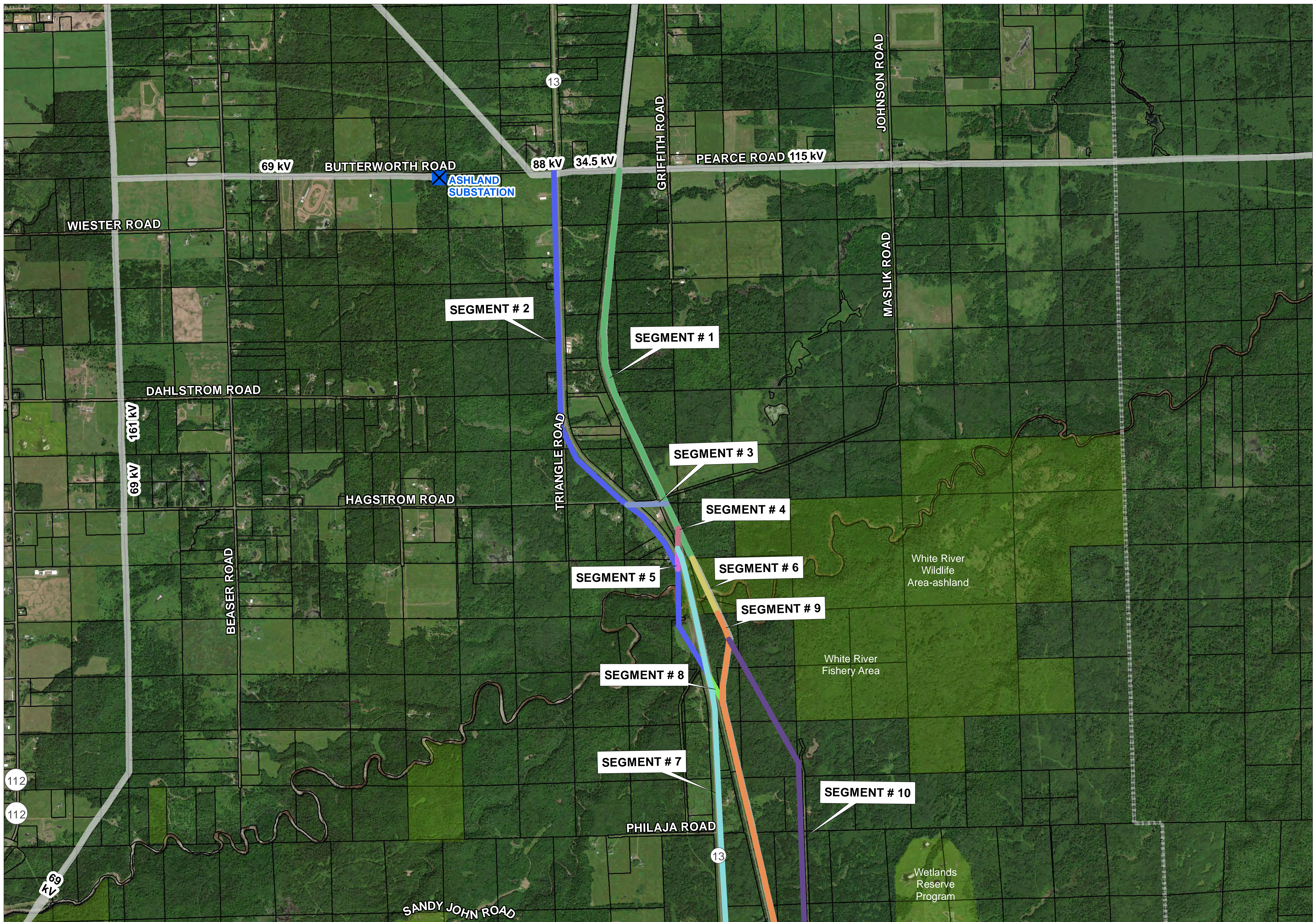
0 1 2 4 Miles



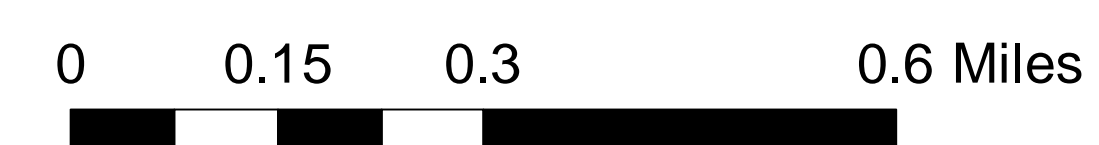
-  Xcel Energy Substations
-  Dairyland Power Substations
-  Existing Overhead Transmission
-  Tile Map Boundary

Disclaimer: This information is believed to be correct, but is subject to change and carries no warranty. Data courtesy of Xcel Energy, Bad River Band of the Lake Superior Tribe of Chippewa Indians and ESRI.





# TILE MAP 1



	Xcel Energy Substations		Protected Area
	Dairyland Power Substations		Tribal Reservation Boundary
	Existing Overhead Transmission		Parcel Boundary


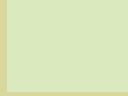




Disclaimer: This information is believed to be correct, but is subject to change and carries no warranty. Data courtesy of Xcel Energy, Bad River Band of the Lake Superior Tribe of Chippewa Indians and ESRI.





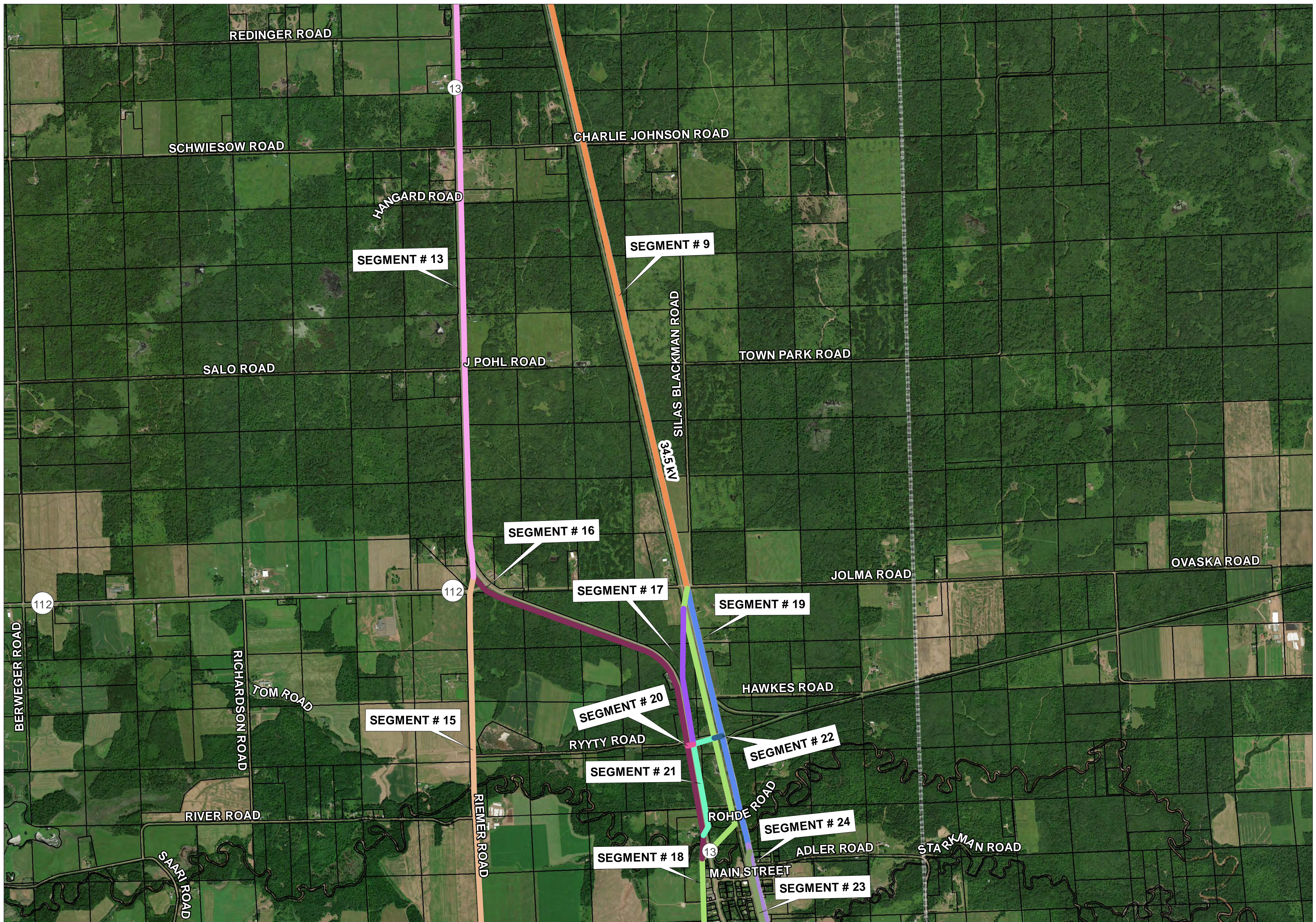
# TILE MAP 2



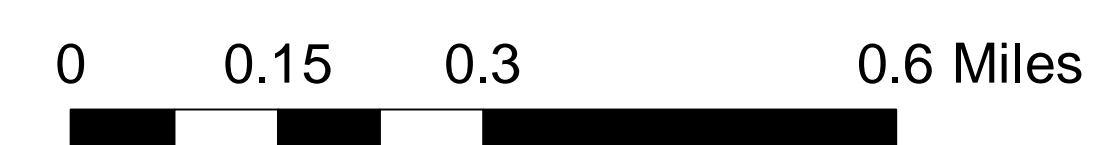
	Xcel Energy Substation		Protected Area
	Dairyland Power Substation		Tribal Reservation Boundary
	Existing Overhead Transmission		Parcel Boundary

Disclaimer: This information is believed to be correct, but is subject to change and carries no warranty. Data courtesy of Xcel Energy, Bad River Band of the Lake Superior Tribe of Chippewa Indians and ESRI.





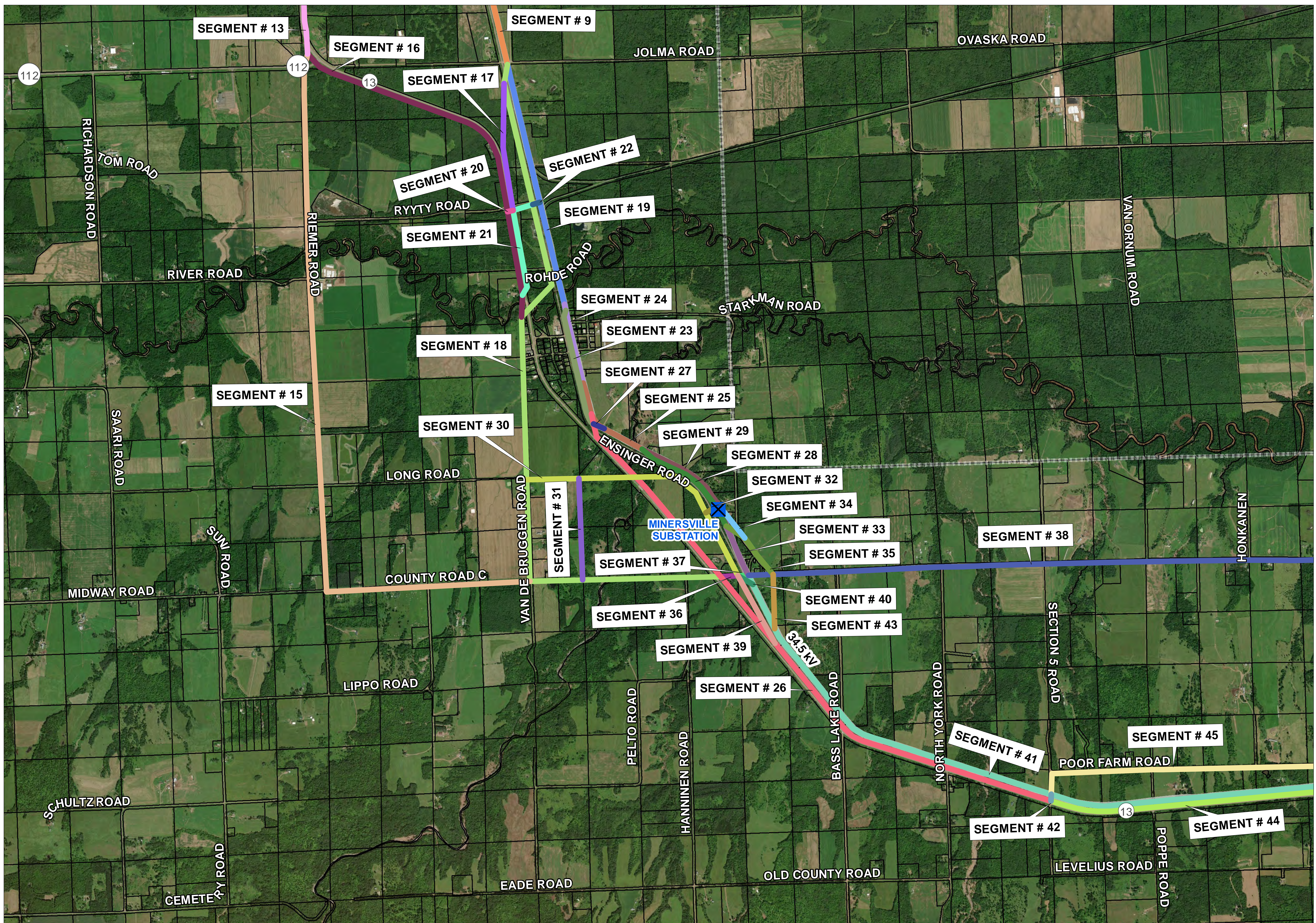
# TILE MAP 3



	Xcel Energy Substations		Protected Area
	Dairyland Power Substations		Tribal Reservation Boundary
	Existing Overhead Transmission		Parcel Boundary

Disclaimer: This information is believed to be correct, but is subject to change and carries no warranty. Data courtesy of Xcel Energy, Bad River Band of the Lake Superior Tribe of Chippewa Indians and ESRI.





# TILE MAP 4

0 0.15 0.3 0.6 Miles



	Xcel Energy Substations		Protected Area
	Dairyland Power Substations		Tribal Reservation Boundary
	Existing Overhead Transmission		Parcel Boundary

Disclaimer: This information is believed to be correct, but is subject to change and carries no warranty. Data courtesy of Xcel Energy, Bad River Band of the Lake Superior Tribe of Chippewa Indians and ESRI.