

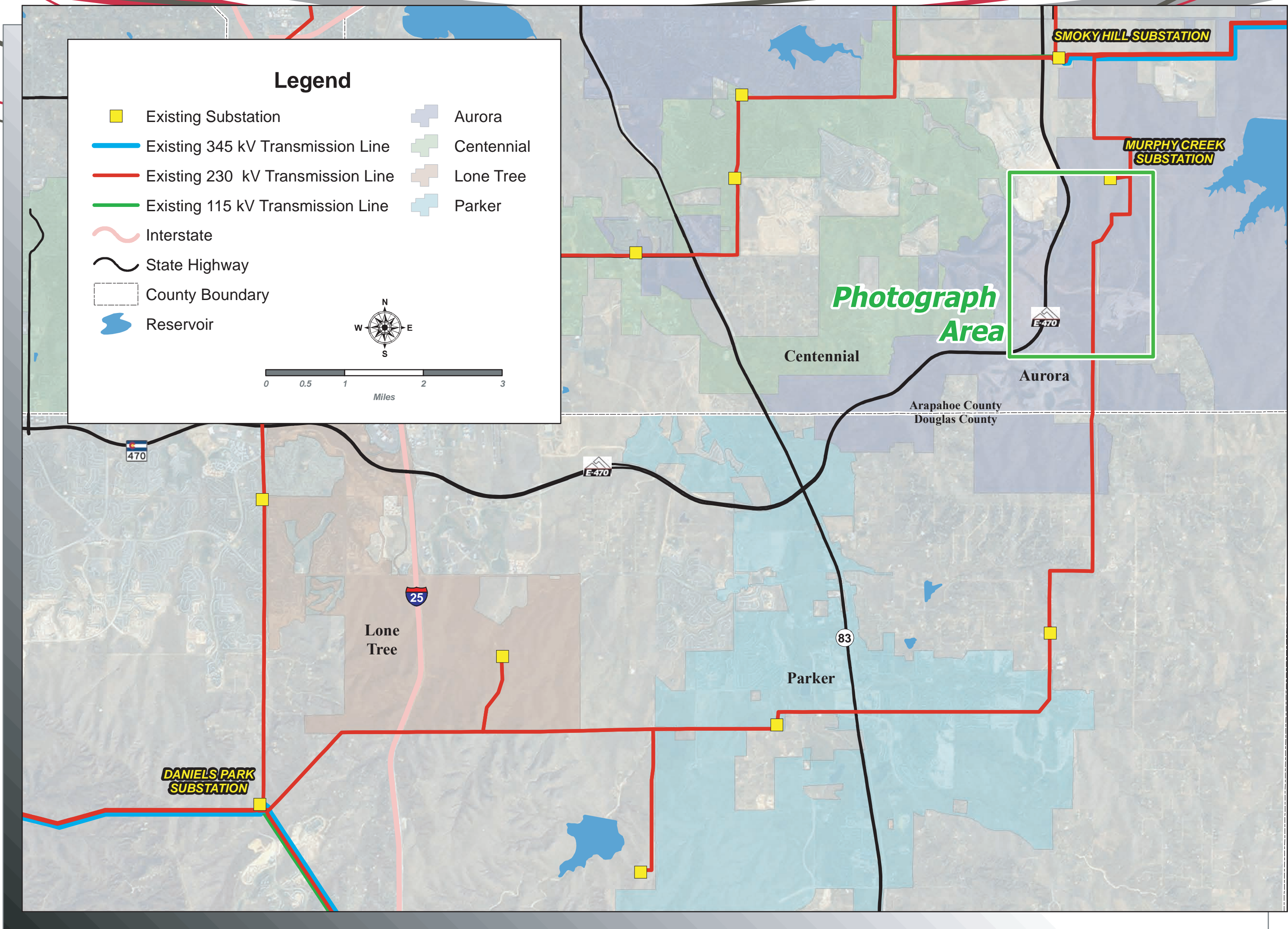
Pawnee - Daniels Park 345kV Transmission Project

HISTORICAL COMPARISON

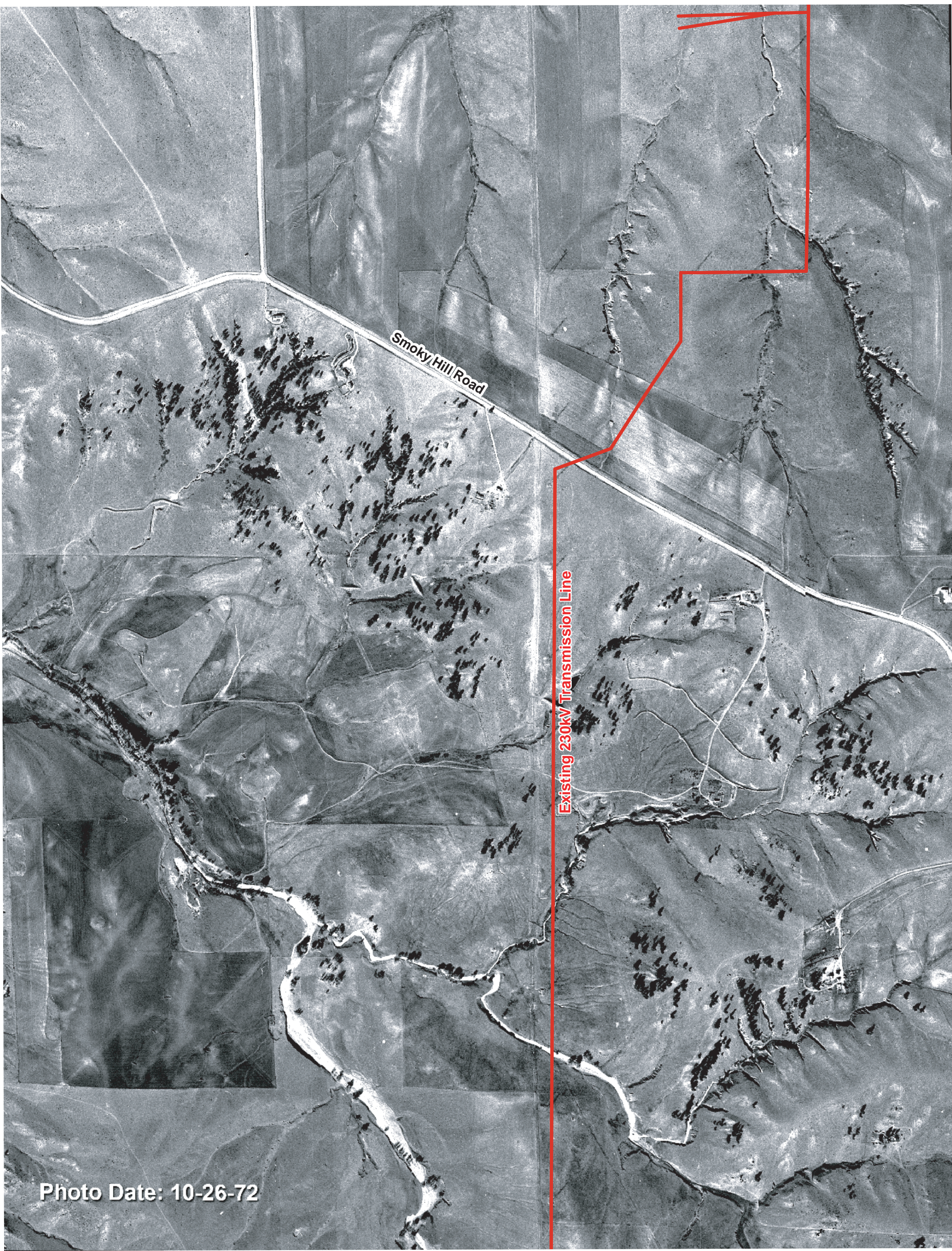
City of Aurora

Population Growth 1960 - Present

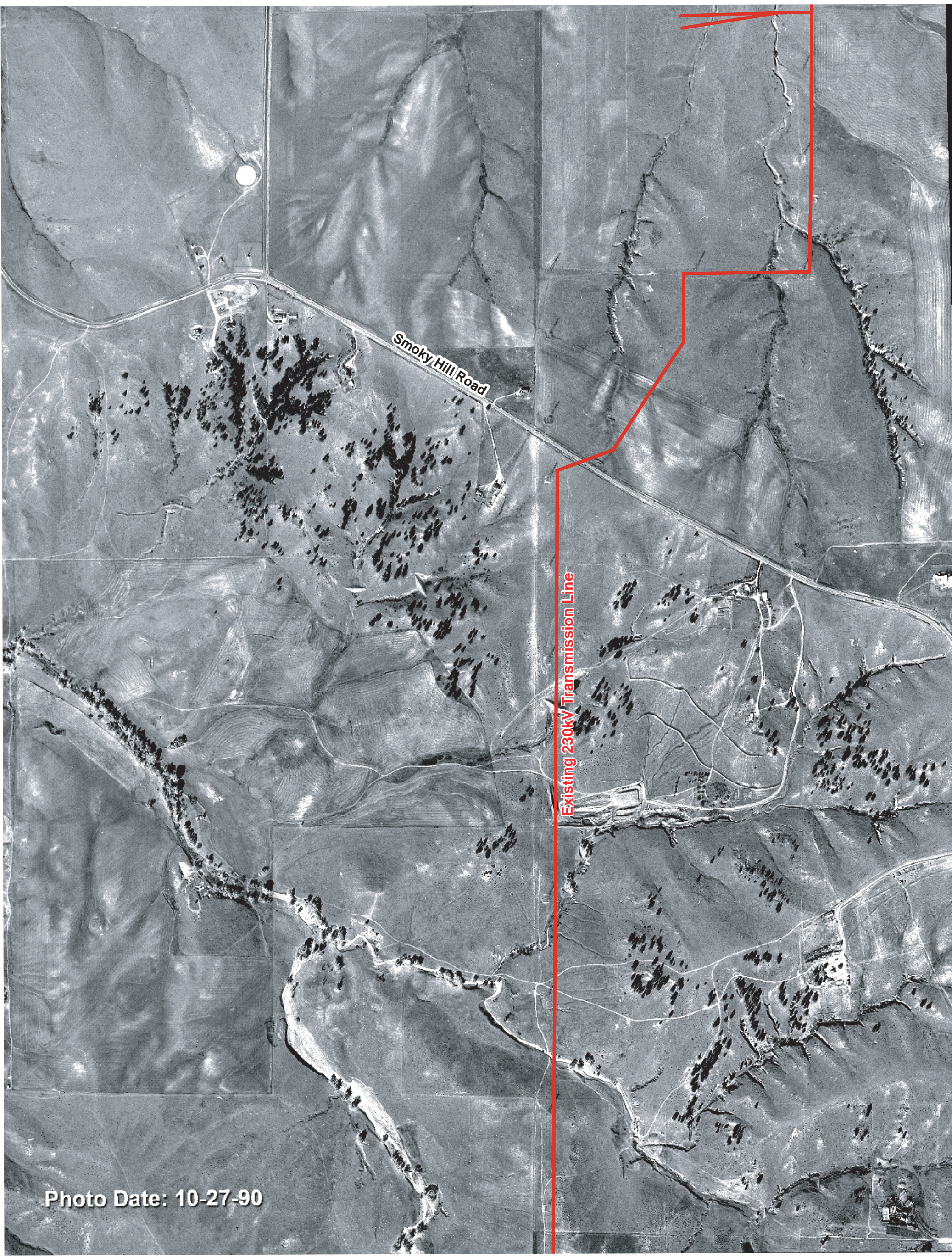
	1960	1970	1980	1990	2000	2010	2012 (estimate)
Aurora	48,548	74,974	158,588	222,103	276,393	325,078	339,030
Castle Rock	1,152	1,531	3,921	8,708	20,526	48,231	51,348
Town of Parker			285	5,450	32,145	45,297	47,169
Douglas County	4,816	8,407	25,153	60,391	175,766	285,465	298,215
Arapahoe County	113,426	162,142	293,621	391,511	487,967	572,003	595,546
Denver	493,887	514,678	492,365	467,610	554,636	600,158	634,265
Denver (metro)	934,884	1,239,454	1,620,902	1,922,980	2,109,283	2,543,482	2,509,230



1972



1990



2010

