

PTARMIGAN SUBSTATION

PROJECT OVERVIEW

Public Service Company of Colorado (PSCo), an Xcel Energy Company, is proposing to construct the Ptarmigan Substation Project. The project consists of an electric distribution substation and its associated overhead double-circuit 230,000 volt (230-kV) electric transmission line interconnection, an access road and two initial buried distribution feeder lines in or near Silverthorne, Colo.

The Colorado Public Utilities Commission (CPUC) determined that the project is considered part of the company's normal business activities to meet the demand for electricity and help improve service reliability to customers in the Silverthorne area. The current target date for project completion is early winter 2012. PSCo anticipates one summer season would be needed in order to complete the substation and related facilities. The proposed construction start date is spring 2012.

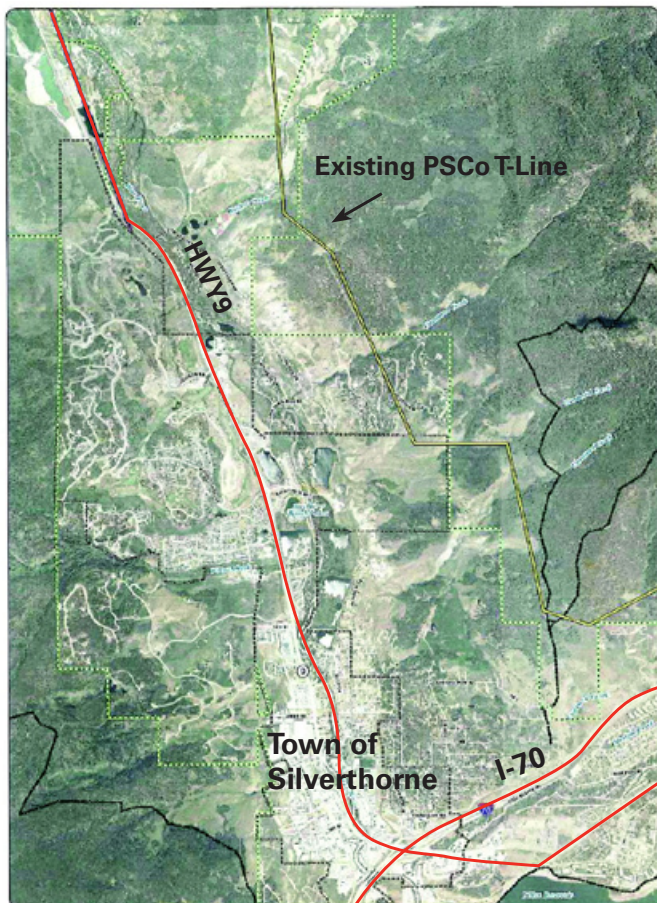
The transmission line interconnection is required to bring power to the substation. The new segment of transmission line would "tap" PSCo's existing single circuit 230-kV Blue River Substation to Dillon Substation transmission line, which is depicted in the illustration below.

The substation would "step down" the voltage from 230-kV to 25-kV for distribution to homes and businesses.

Since the study area has been expanded to the north, PSCo believes it can effectively site, design and construct the substation using air insulated switchgear technology. This technology requires the fenced portion of the substation site to be approximately 2.5 acres. Additional area outside the fenced site is required for grading and landscaping amenities.

When complete, the project would be able to accommodate up to twelve 25-kV distribution feeders lines. The first two of these feeders would interconnect with the existing distribution network in the Silverthorne area. Future feeders from the Ptarmigan Substation would be constructed as needed to meet increases in electric demand or address related reliability issues.

This substation also would require an access road approximately 24-feet wide, built to local and industry standards.



QUESTIONS?

If you have any questions
please contact:

Larry Claxton
303-571-7089