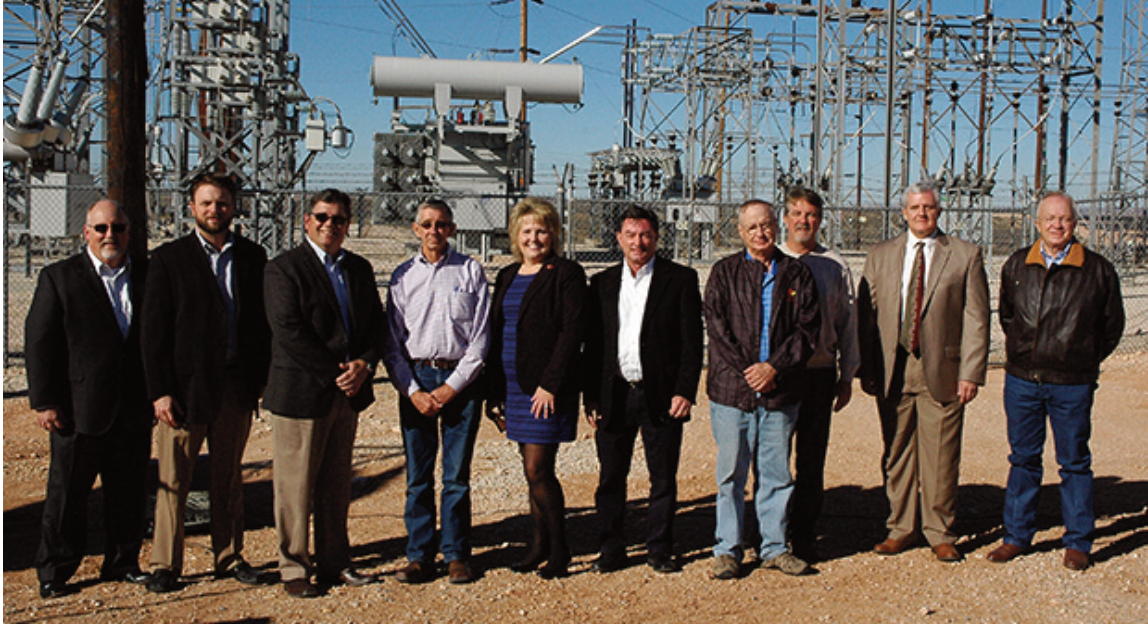




continued



Speakers at the event (left to right) David Hudson, Xcel Energy; Mitch Krakauskas, Independent Petroleum Association of New Mexico; Mike McLeod, Xcel Energy; Mayor Dale Janway, Carlsbad; Comm. Susan Crockett, Eddy County; Tres Hicks, Lea County, Economic Development Council; Comm. Ron Black, Lea County; Mark Roper, NM Dept. of Econ. Dev.; Mark Shinnerer, Carlsbad Dept. of Development; and State Rep. Jim Townsend, Artesia

Vice-Chairman Ron Black. "We appreciate the effort Xcel Energy is making to bring power to this area. The hundreds of new oil wells being drilled in this area are essential to our economy and we depend on Xcel Energy to provide the power to operate these wells."

Xcel Energy is building new electrical infrastructure in Lea and Eddy Counties to serve expanding industries such as oil and gas production, gas compression and mining. These industries require additional infrastructure including housing, restaurants and other supporting businesses.

Renewable Energy Growth

Renewable energy growth could not happen without the expansion of transmission lines to carry the green energy to market. Xcel Energy built the Crossroads Substation outside of Portales to interconnect with the new 250 Megawatt Roosevelt wind farm. The wind farm near Elida, N.M. will supply power to Xcel Energy customers.



Focus on Safety

Safety is a core value at Xcel Energy. Nearly 500,000 hours have been logged in the field on the southeast New Mexico projects without a major safety incident. Xcel Energy crews hold daily safety briefings to emphasize safety messages and challenges crews face in the field.



What's Next?

Permitting activities are underway on another 400 miles of new transmission line planned in New Mexico, with construction activities beginning on several projects in 2016. The projects will provide a new power supply to meet growing electricity demand in Eddy and Lea Counties and the surrounding region.

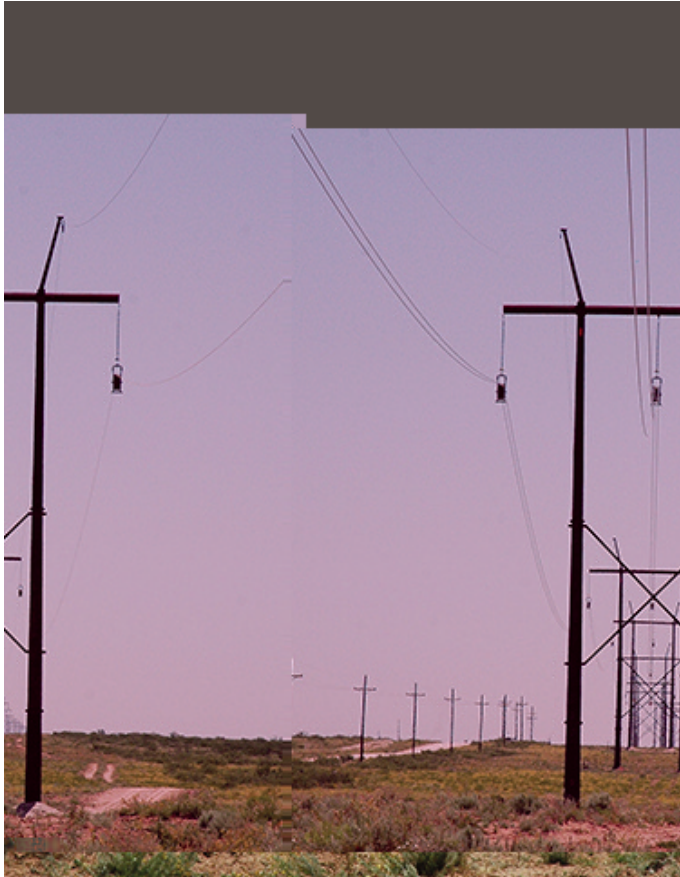
- Construction on the approximately two-mile 115-kilovolt Andrews-NEF transmission line near Eunice, N.M. is

expected to be complete by the end of December, 2015. Construction on the Andrews Substation on the Texas border, approximately seven miles from Eunice, is expected to be complete in April, 2016.

- Construction on the approximately 25 mile Cardinal to Sage Brush 115-kilovolt transmission line is expected to begin in 2016. The project includes building two new substations east of Carlsbad.



Crews work on the Curry County Substation near Clovis, N.M. Foundation installation on the 37-mile Curry-Bailey 115 kilovolt transmission line is approximately 40 percent complete. The Curry-Bailey project connects the Curry Substation near Clovis, N.M. to the Bailey Substation near Muleshoe, Texas. The project is expected to be energized in September, 2016.



Learn more about all of the projects and contact us with questions or comments on Powerfortheplains.com.

12/18/2015