

Ochiltree-Lipscomb 115 kV transmission line project

Project overview

The Ochiltree-Lipscomb transmission line project is located in Ochiltree and Lipscomb counties, Texas. The project proposes to build 19 to 25 miles of new 115 kV single circuit, steel single pole electric transmission line.

The 115 kV line will connect the existing Ochiltree County Substation north of Perryton to a new Lipscomb substation east of Booker, which is located at the intersection of Ranch Road 1265 and East Industrial Avenue. The project also includes a new connection to the existing Wade Substation located between the Ochiltree County Substation and the new Lipscomb substation near Booker.

Project need

The Ochiltree-Lipscomb project will improve electric reliability of Xcel Energy's existing system in Ochiltree and Lipscomb counties and will allow new electric load on the system in the Perryton and Booker areas.

The line will also mitigate low voltage and overload condition should the Hitchland-Ochiltree 230 kV line go out of service. Converting the Booker substation from 69 kV to 115 kV will allow for future load growth. An existing 50-year-old, 66 kV transmission line segment between Perryton and Booker will be removed as part of this project.

The Public Utility Commission of Texas must grant a Certificate of Convenience and Necessity (CCN) before construction. The CCN process determines the project need and impact as well as the line characteristics, such as substations and end-points, and the line route. Xcel Energy plans to file a CCN with the PUCT in spring 2013. Visit the PUCT website at www.puc.texas.gov or call (512) 936-7000 for more information.

Project quick facts

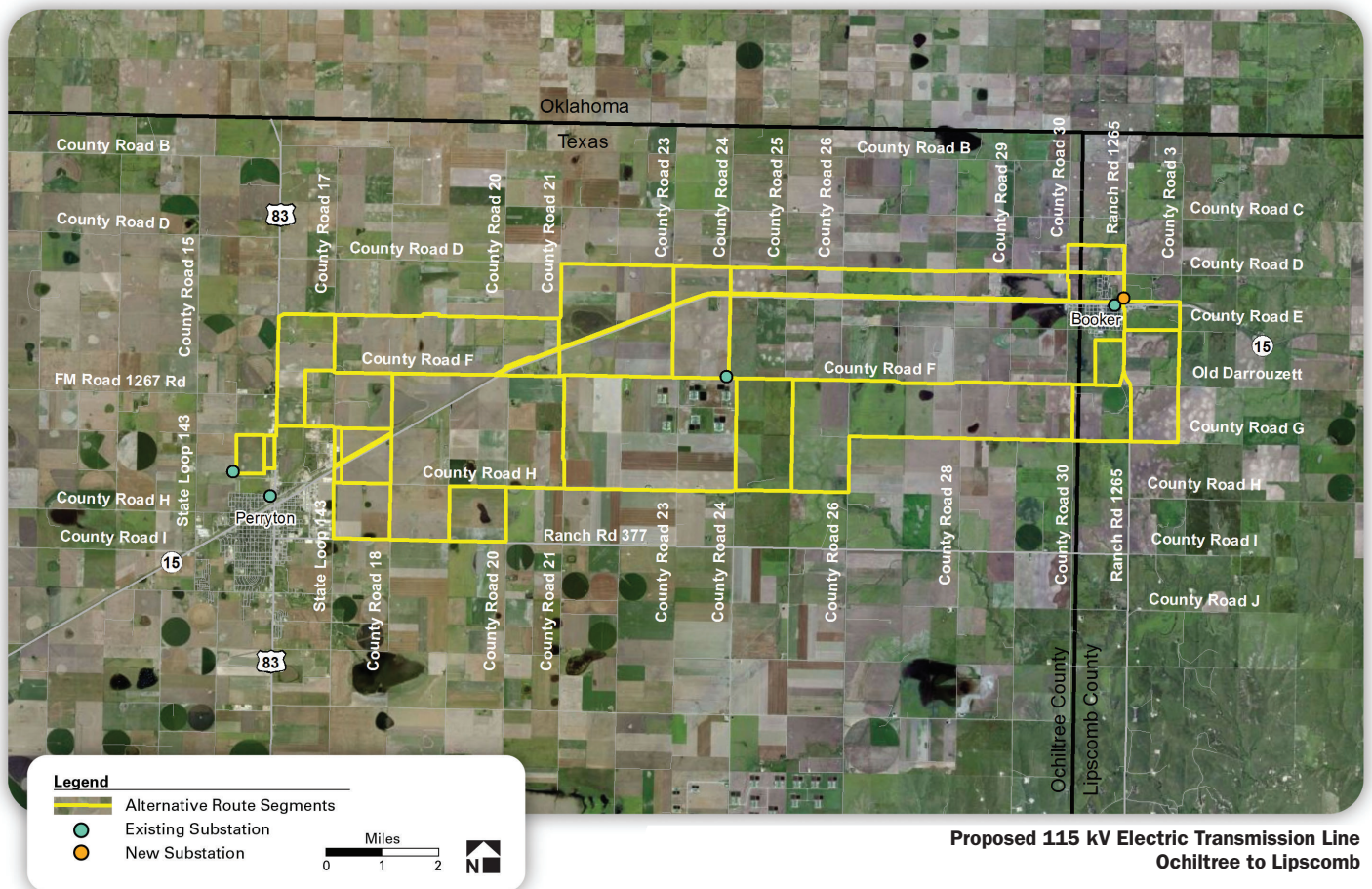
- 115 kV line
- About 19 to 25 miles
- Targeted in-service: December 2015

About Power for the Plains

In spring 2010, the Southwest Power Pool Inc. (SPP) approved a series of new transmission lines in several states, including Texas, New Mexico and Oklahoma, to help improve electric reliability, strengthen the existing transmission grid and provide outlet for additional renewable wind generation.

As a member of SPP, Xcel Energy proposes to build more than \$1 billion in new transmission lines and related facilities over the next six years.

Ochiltree-Lipscomb 115 kV transmission line project Preliminary route segments



Contact us

Liz Kirkpatrick, Senior Siting and Land Rights Agent
Xcel Energy
(303) 571-7088
elizabeth.a.kirkpatrick@xcelenergy.com