

Potash Junction-Roadrunner 230 kV Transmission Line Project

Project overview

The proposed Potash Junction-Roadrunner 230 kV transmission line project consists of 40 miles of new 230 kV transmission line between the new Roadrunner Substation located about 45 miles southeast of Carlsbad, New Mexico and the Potash Junction Substation located approximately 15 miles northeast of Carlsbad. The line will be constructed as 345 kV but initially operated at 230 kV.

The Potash Junction-Roadrunner transmission line project is expected to be in-service in 2015. The estimated cost is \$52.9 million.

Project need

The project will improve reliability and meet growing electricity demand in Eddy and Lea Counties. It will also create additional capacity on the existing 115 kV system.

Xcel Energy Transmission



Project quick facts

- **Voltage: 230 kV**
- **Length: 40 miles**
- **Cost: Approximately \$52.9 Million**
- **Targeted in-service: 2015**

Regulatory Process

Xcel Energy filed a Certificate of Convenience and Necessity with the New Mexico Public Regulation Commission (NM PRC) on April 22, 2014. The NM PRC must grant a Certificate of Convenience and Necessity (CCN) before construction.

The CCN process determines the project need and impact as well as the line characteristics, such as substations and endpoints, and the line route. Visit the NM PRC website at: <http://www.nmprc.state.nm.us/> or call 1-888-427-5772 for more information.

Southeast New Mexico Projects

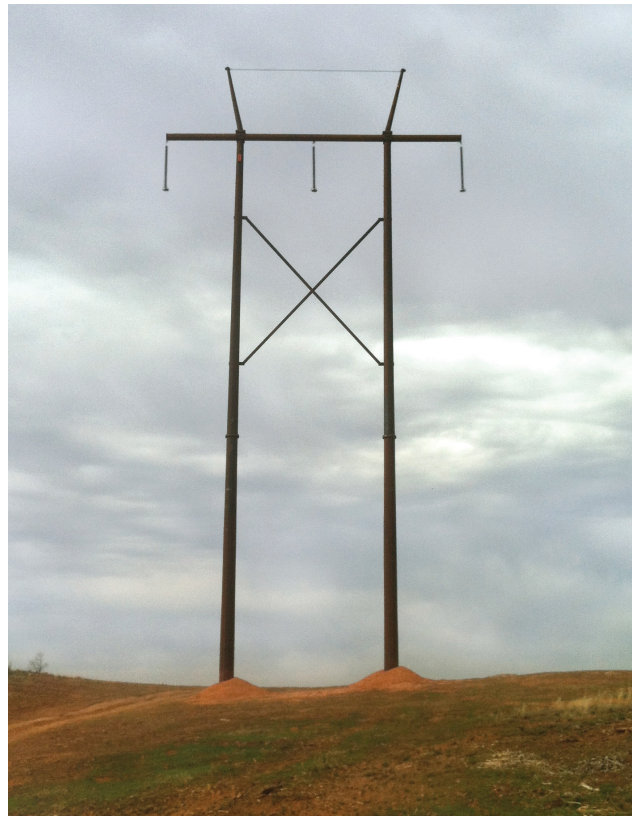
Major energy developments in mining, oil and natural gas extraction and other commercial growth have prompted Xcel Energy to develop an infrastructure expansion plan for southeastern New Mexico. In 2013, electricity demand increased nearly 10 percent in the area. Xcel Energy has received hundreds of new service requests in Lea and Eddy counties for oil field, residential and commercial service. As energy development ramps up, other area industries – and the communities that support them – are also seeking additional power to address growing electric reliability needs. On April 29, 2014, the Southwest Power Pool approved the issuance of 44 Notices

to Construct for new transmission facilities in New Mexico needed between now and 2020 at a cost of \$557 million. Xcel Energy plans to build all of the approved facilities including construction of 12 new substations and upgrades to 9 existing substations, as well as 149 miles of 115 kV transmission lines and 245 miles of 345 kV lines.

Contact us:

Scott Morris
Siting & Land Rights
806-378-2738

For more information on the Potash Junction-Roadrunner 230 kV transmission line visit www.powerfortheplains.com



Structures installed for the line will be two-pole H-frame steel ranging from 80-140 feet tall.