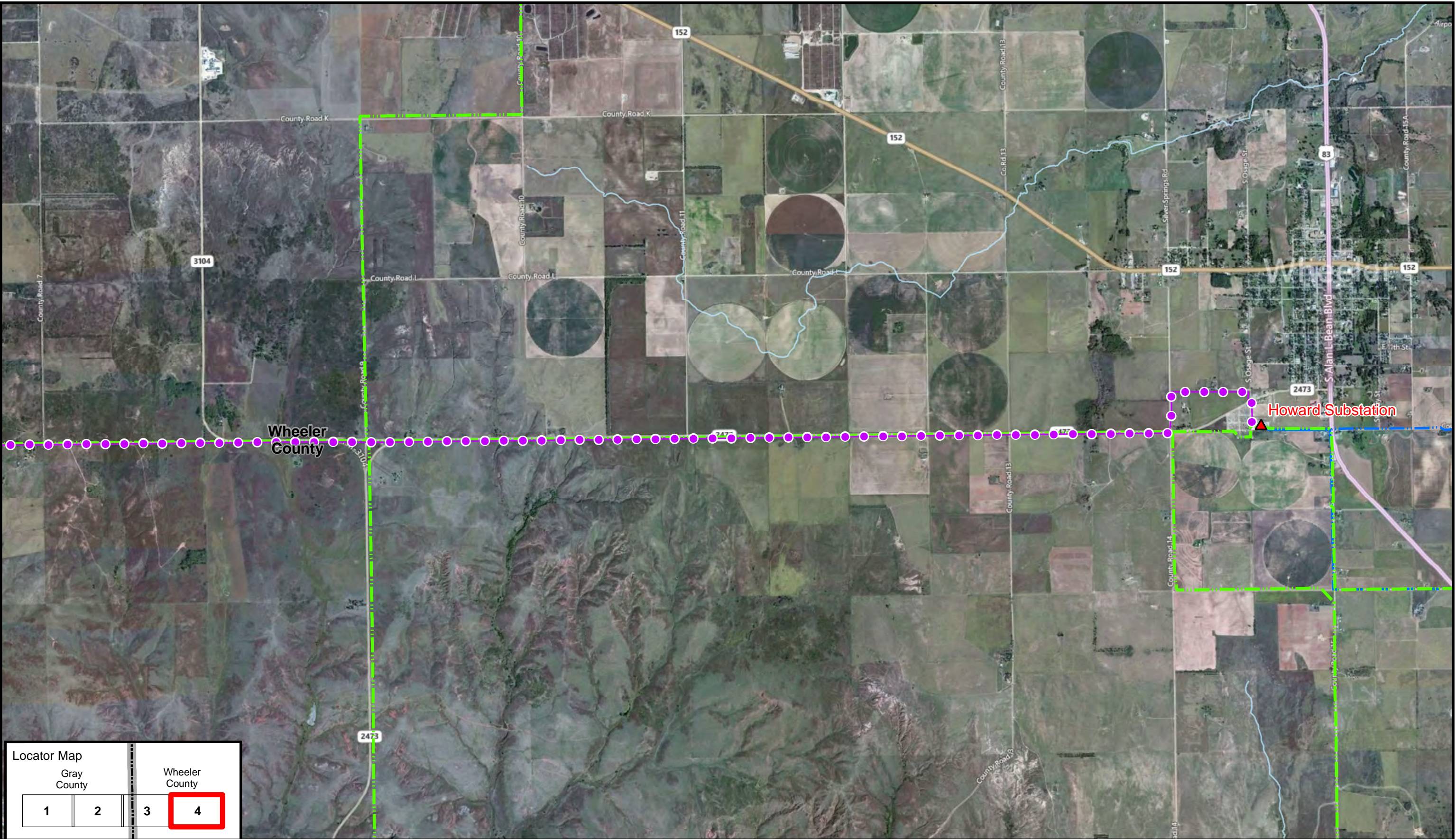






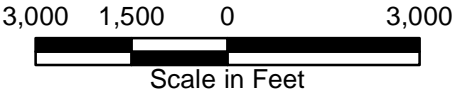


Path: V:\SPS62799_Bowers_Howard\GISDataFiles\ArcDocs\Approved_Route_WebMap.mxd k_wise 6/21/2013
COPYRIGHT © 2013 BURNS & MCDONNELL ENGINEERING COMPANY, INC.



Locator Map			
Gray County		Wheeler County	
1	2	3	4

-  Existing Substation
-  Approved Route
-  County Boundary
-  Existing SPS Transmission Line
-  Cross Texas Transmission Proposed Transmission Line
-  Existing & Proposed Greenbelt Transmission Line



Approved Route
Bowers to Howard
Sheet 4 of 4
Revised: June 9, 2013